

35-19-15

[illegible]

Zoning

FORM NO. 585-A

WISCONSIN DEPT. OF NATURAL RESOURCES

*OK
DE 8
12/7/79*

WINNEBAGO COUNTY CERTIFIED SURVEY MAP NO. 1671
Part of Lots 12 and 13 of RIVERMOOR in Gov't. Lot 3 of Sec. 35, T.19N.,
R.15E., Town of Winneconne.

Volume 1217 Page 202

NOTE: Platted dimensions of lots
extend northward beyond
present shoreline of Fox
River.

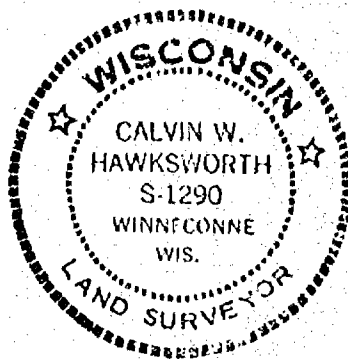
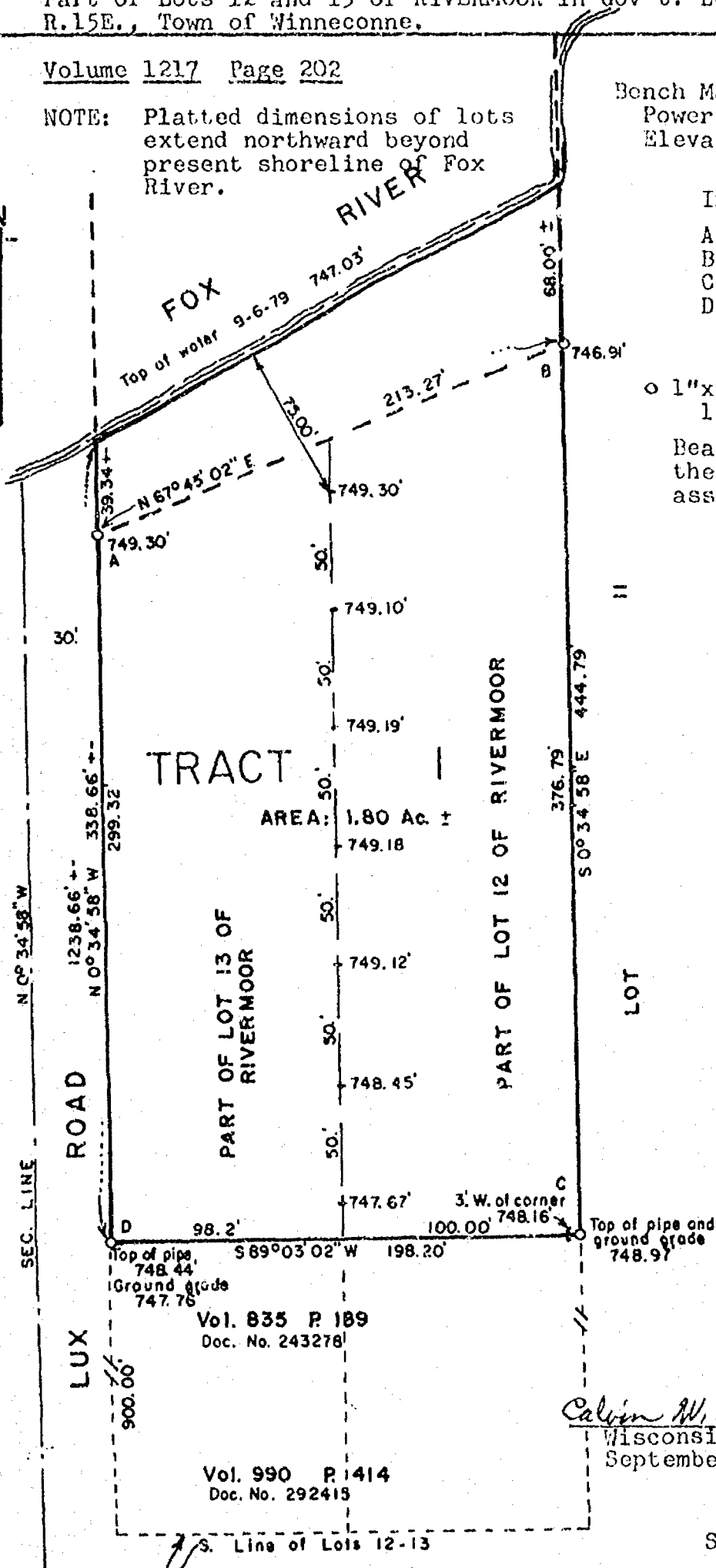
Bench Mark: U.S.G.S
Power pole No. 18-15-3 13/26
Elevation: 760.42

Interior angles:

- A. $111^{\circ}40'00''$
- B. $68^{\circ}20'00''$
- C. $90^{\circ}22'00''$
- D. $89^{\circ}38'00''$
- $360^{\circ}00'00''$

o 1"x30" iron pipe weighing
1.13 lbs./lineal ft.

Bearings are referenced to
the West line of Sec. 35,
assumed bearing, $N0^{\circ}34'58''W$.



SCALE IN FEET
60 30 0 60

Calvin W. Hawksworth S-1290
Wisconsin Registered Land Surveyor
September 17, 1979.

Sheet 1 of 2 sheets

Vol. 990 P. 414
Doc. No. 292415

Vol. 835 P. 189
Doc. No. 243278

S. Line of Lots 12-13

WINNEBAGO COUNTY CERTIFIED SURVEY MAP NO. 671

Part of Lots 12 and 13 of RIVERMOOR in Gov't. Lot 3 of Sec. 35, T.19N., R.15E., Town of Winneconne.

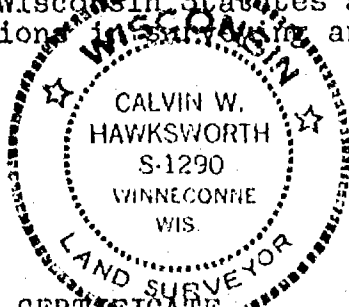
I, Calvin W. Hawksworth, registered land surveyor, hereby certify:

That I have surveyed and mapped the parcel of land located in part of Gov't. Lot 3 in Sec. 35, T.19N., R.15E. in the Town of Winneconne, Winnebago County, Wisconsin, described more specifically in Volume 1217, page 202 of Winnebago County Records as follows:

Lot 12 and Lot 13 in RIVERMOOR in Sec. 34 & 35 in T.19N., R.15E., County of Winnebago and State of Wisconsin as per plat recorded in the office of the Register of Deeds for Winnebago County, State of Wisconsin. Excepting therefrom the South 900 feet, thereof, being that portion or parcel thereof conveyed to Marshal Bartow and Anna Mae Bartow, his wife, by land contract, dated Sept. 2, 1961 and recorded in office of Register of Deeds for Winnebago County, Wisconsin, on October 11, 1961 as Doc. No. 292415 and excepting that portion thereof conveyed to James Schauth & Virginia A., his wife, dated 3/13/55, recorded 3/29/57 in Volume 835, page 189 as Doc. No. 243278.

That I have made such survey and map by the direction of Richard Elsner, 2741 N. Booth, Milwaukee, Wisconsin, 53212; that such map is a correct representation of the exterior boundaries of the land surveyed.

That I have fully complied with the provisions of Sec. 236.34 of the Wisconsin Statutes and the Winnebago County Subdivision regulations and mapping the same.



Calvin W. Hawksworth
Calvin W. Hawksworth S-1290
Wisconsin Registered Land Surveyor
September 17, 1979.

OWNER'S CERTIFICATE

As owner(s) I (we) hereby certify that I (we) caused the land described on this Certified Survey Map to be surveyed and mapped as represented hereon.

WITNESS the hand and seal of said owner(s) this 21st day of September, 1979.

In presence of:

Shirley C. Rodriguez
Witness

Richard E. Elsner
Owner(s)
2741 N. Booth
Address
Mil. Wisc. 53204
City-State Zip

STATE OF WISCONSIN) SS
WINNEBAGO COUNTY)

Personally came before me this 21st day of September, 1979, the above named Richard E. Elsner to me known to be the person(s) who executed the foregoing instrument and acknowledged the same.

Shirley C. Rodriguez
Notary Public, Milwaukee Wisc.

My commission expires 11/11/79

WINNEBAGO COUNTY PLANNING COMMITTEE CERTIFICATE

This Certified Survey Map of part of Lots 12 and 13 of RIVERMOOR in Gov't. Lot 3 of Sec. 35, T.19N., R.15E., in the Town of Winneconne is hereby approved.

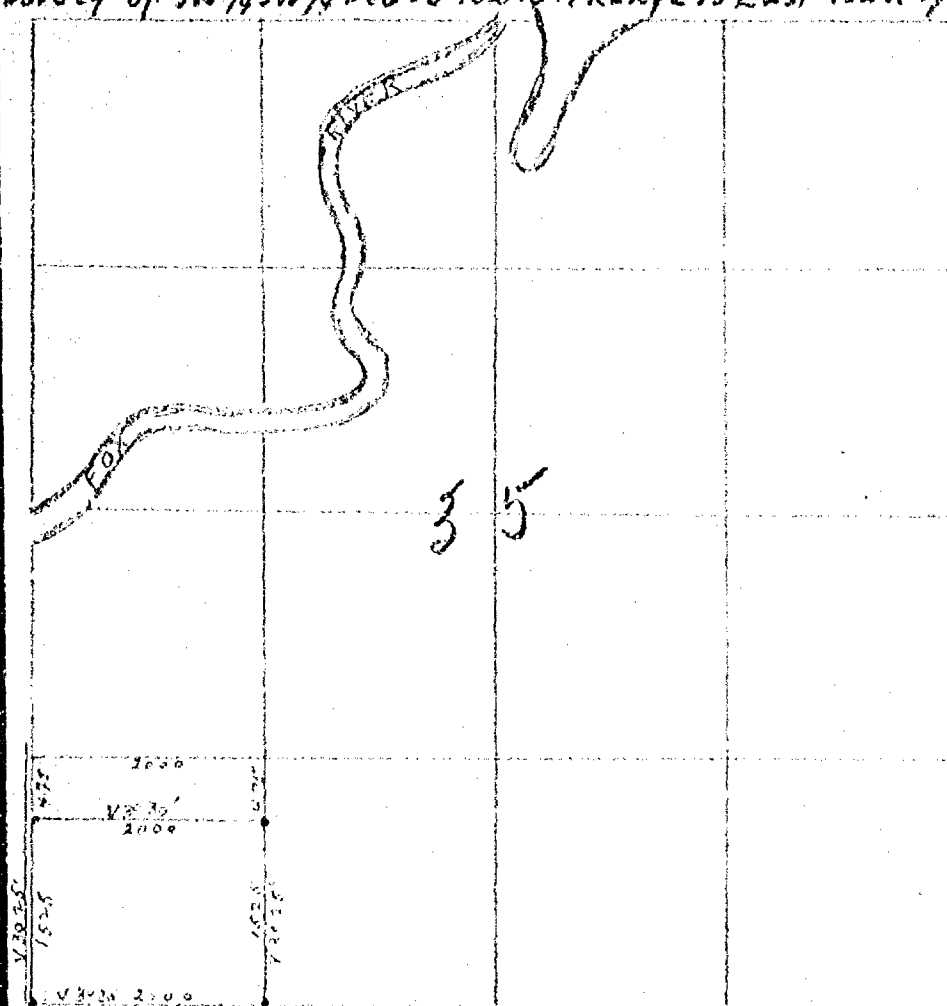
Sept. 21, 1979
Date

Robert M. Hunter
Authorized representative
Winnebago Co. Planning Committee

Survey of SW 1/4 SW 1/4 Sec 35 Town 19 Range 15 East Town of Winneconne

121

Winnebago Co
Wis.



I Began at the S W corner of Sec Ran East V 30° 30' at 2000 set for corner a 1 1/2 inch gas pipe 6 ft long drove it in the ground 5 ft left 1 ft out of ground thence North V 30° 25' 1525 and set for corner a 1 1/2 inch gas pipe 11 ft long drove it in ground 3 ft thence West V 30° 30' 2000 and in center of Road I set for corner a 1 1/2 inch gas pipe 6 ft long drove it 4 1/2 ft in the ground thence South V 30° 25' 1525 to the Sec corner the Place of Beginning Began June 27th 1912 Completed June 27th 1912 W W Gould Co Surveyor

F Lightfoot Chairman
Martin
E Martin Flagman

CITY OF OSHKOSH
ENGINEERING DEPARTMENT

DRAWN

SCALE

SURVEY OF SW 1/4 SW 1/4 SEC 35 TOWN 19
RANGE 15 EAST TOWN OF WINNECONNE
WINNEBAGO CO WIS.

540899

Register's Office
Winnebago County, Wis.
Received for record this 1st
day of October A.D. 1979
at 9:10 o'clock A.M. and
recorded in Vol. 1 of Survey Maps
on page 671.

William M. Payne
Register of Deeds

Saylor RJ
2.00

PLAT OF SURVEY

THE NORTH 200 FEET OF THE SOUTH 400 FEET OF LOTS 12 AND 13 IN THE PLAT OF "RIVERMOOR", IN THE TOWN OF WINNECONNE, TOWNSHIP 19 NORTH, RANGE 10 EAST, WINNEBAGO COUNTY, WISCONSIN.

535

SURVEY FOR

ANTHONY SCIRATH
ROUTE RIVERMOOR ROAD
CHRD. AT 54903

TRACT 1
CSM 671

UNITS OF FILLD AREA
N 85°58'27" E 198.70'

TAX PARCEL 090020002
00.030 SQ. FT. 70.010 ACRES

RIVERMOOR

15 14

12

RIVERMOOR
DRIVE

67

RIVERMOOR

13

SURVEYOR'S CERTIFICATE

Anthony Scirath Feb 11, 1953



LEGEND

- 1. 1/4" ALL DIM. FOR 1/4" SCALE
- 2. 1/4" ALL DIM. FOR 1/4" SCALE
- 3. 1/4" ALL DIM. FOR 1/4" SCALE
- 4. 1/4" ALL DIM. FOR 1/4" SCALE
- 5. 1/4" ALL DIM. FOR 1/4" SCALE
- 6. 1/4" ALL DIM. FOR 1/4" SCALE
- 7. 1/4" ALL DIM. FOR 1/4" SCALE
- 8. 1/4" ALL DIM. FOR 1/4" SCALE
- 9. 1/4" ALL DIM. FOR 1/4" SCALE
- 10. 1/4" ALL DIM. FOR 1/4" SCALE
- 11. 1/4" ALL DIM. FOR 1/4" SCALE
- 12. 1/4" ALL DIM. FOR 1/4" SCALE
- 13. 1/4" ALL DIM. FOR 1/4" SCALE
- 14. 1/4" ALL DIM. FOR 1/4" SCALE
- 15. 1/4" ALL DIM. FOR 1/4" SCALE
- 16. 1/4" ALL DIM. FOR 1/4" SCALE
- 17. 1/4" ALL DIM. FOR 1/4" SCALE
- 18. 1/4" ALL DIM. FOR 1/4" SCALE
- 19. 1/4" ALL DIM. FOR 1/4" SCALE
- 20. 1/4" ALL DIM. FOR 1/4" SCALE
- 21. 1/4" ALL DIM. FOR 1/4" SCALE
- 22. 1/4" ALL DIM. FOR 1/4" SCALE
- 23. 1/4" ALL DIM. FOR 1/4" SCALE
- 24. 1/4" ALL DIM. FOR 1/4" SCALE
- 25. 1/4" ALL DIM. FOR 1/4" SCALE
- 26. 1/4" ALL DIM. FOR 1/4" SCALE
- 27. 1/4" ALL DIM. FOR 1/4" SCALE
- 28. 1/4" ALL DIM. FOR 1/4" SCALE
- 29. 1/4" ALL DIM. FOR 1/4" SCALE
- 30. 1/4" ALL DIM. FOR 1/4" SCALE
- 31. 1/4" ALL DIM. FOR 1/4" SCALE
- 32. 1/4" ALL DIM. FOR 1/4" SCALE
- 33. 1/4" ALL DIM. FOR 1/4" SCALE
- 34. 1/4" ALL DIM. FOR 1/4" SCALE
- 35. 1/4" ALL DIM. FOR 1/4" SCALE
- 36. 1/4" ALL DIM. FOR 1/4" SCALE
- 37. 1/4" ALL DIM. FOR 1/4" SCALE
- 38. 1/4" ALL DIM. FOR 1/4" SCALE
- 39. 1/4" ALL DIM. FOR 1/4" SCALE
- 40. 1/4" ALL DIM. FOR 1/4" SCALE
- 41. 1/4" ALL DIM. FOR 1/4" SCALE
- 42. 1/4" ALL DIM. FOR 1/4" SCALE
- 43. 1/4" ALL DIM. FOR 1/4" SCALE
- 44. 1/4" ALL DIM. FOR 1/4" SCALE
- 45. 1/4" ALL DIM. FOR 1/4" SCALE
- 46. 1/4" ALL DIM. FOR 1/4" SCALE
- 47. 1/4" ALL DIM. FOR 1/4" SCALE
- 48. 1/4" ALL DIM. FOR 1/4" SCALE
- 49. 1/4" ALL DIM. FOR 1/4" SCALE
- 50. 1/4" ALL DIM. FOR 1/4" SCALE
- 51. 1/4" ALL DIM. FOR 1/4" SCALE
- 52. 1/4" ALL DIM. FOR 1/4" SCALE
- 53. 1/4" ALL DIM. FOR 1/4" SCALE
- 54. 1/4" ALL DIM. FOR 1/4" SCALE
- 55. 1/4" ALL DIM. FOR 1/4" SCALE
- 56. 1/4" ALL DIM. FOR 1/4" SCALE
- 57. 1/4" ALL DIM. FOR 1/4" SCALE
- 58. 1/4" ALL DIM. FOR 1/4" SCALE
- 59. 1/4" ALL DIM. FOR 1/4" SCALE
- 60. 1/4" ALL DIM. FOR 1/4" SCALE
- 61. 1/4" ALL DIM. FOR 1/4" SCALE
- 62. 1/4" ALL DIM. FOR 1/4" SCALE
- 63. 1/4" ALL DIM. FOR 1/4" SCALE
- 64. 1/4" ALL DIM. FOR 1/4" SCALE
- 65. 1/4" ALL DIM. FOR 1/4" SCALE
- 66. 1/4" ALL DIM. FOR 1/4" SCALE
- 67. 1/4" ALL DIM. FOR 1/4" SCALE
- 68. 1/4" ALL DIM. FOR 1/4" SCALE
- 69. 1/4" ALL DIM. FOR 1/4" SCALE
- 70. 1/4" ALL DIM. FOR 1/4" SCALE
- 71. 1/4" ALL DIM. FOR 1/4" SCALE
- 72. 1/4" ALL DIM. FOR 1/4" SCALE
- 73. 1/4" ALL DIM. FOR 1/4" SCALE
- 74. 1/4" ALL DIM. FOR 1/4" SCALE
- 75. 1/4" ALL DIM. FOR 1/4" SCALE
- 76. 1/4" ALL DIM. FOR 1/4" SCALE
- 77. 1/4" ALL DIM. FOR 1/4" SCALE
- 78. 1/4" ALL DIM. FOR 1/4" SCALE
- 79. 1/4" ALL DIM. FOR 1/4" SCALE
- 80. 1/4" ALL DIM. FOR 1/4" SCALE
- 81. 1/4" ALL DIM. FOR 1/4" SCALE
- 82. 1/4" ALL DIM. FOR 1/4" SCALE
- 83. 1/4" ALL DIM. FOR 1/4" SCALE
- 84. 1/4" ALL DIM. FOR 1/4" SCALE
- 85. 1/4" ALL DIM. FOR 1/4" SCALE
- 86. 1/4" ALL DIM. FOR 1/4" SCALE
- 87. 1/4" ALL DIM. FOR 1/4" SCALE
- 88. 1/4" ALL DIM. FOR 1/4" SCALE
- 89. 1/4" ALL DIM. FOR 1/4" SCALE
- 90. 1/4" ALL DIM. FOR 1/4" SCALE
- 91. 1/4" ALL DIM. FOR 1/4" SCALE
- 92. 1/4" ALL DIM. FOR 1/4" SCALE
- 93. 1/4" ALL DIM. FOR 1/4" SCALE
- 94. 1/4" ALL DIM. FOR 1/4" SCALE
- 95. 1/4" ALL DIM. FOR 1/4" SCALE
- 96. 1/4" ALL DIM. FOR 1/4" SCALE
- 97. 1/4" ALL DIM. FOR 1/4" SCALE
- 98. 1/4" ALL DIM. FOR 1/4" SCALE
- 99. 1/4" ALL DIM. FOR 1/4" SCALE
- 100. 1/4" ALL DIM. FOR 1/4" SCALE

Martenson & Black, Inc.

Planning - Surveying - Engineering - Architecture
100 W. Main St., Oshkosh, WI 54901
Phone (920) 455-4400 Fax (920) 455-4401
Telex (920) 455-4401
Cable (920) 455-4401