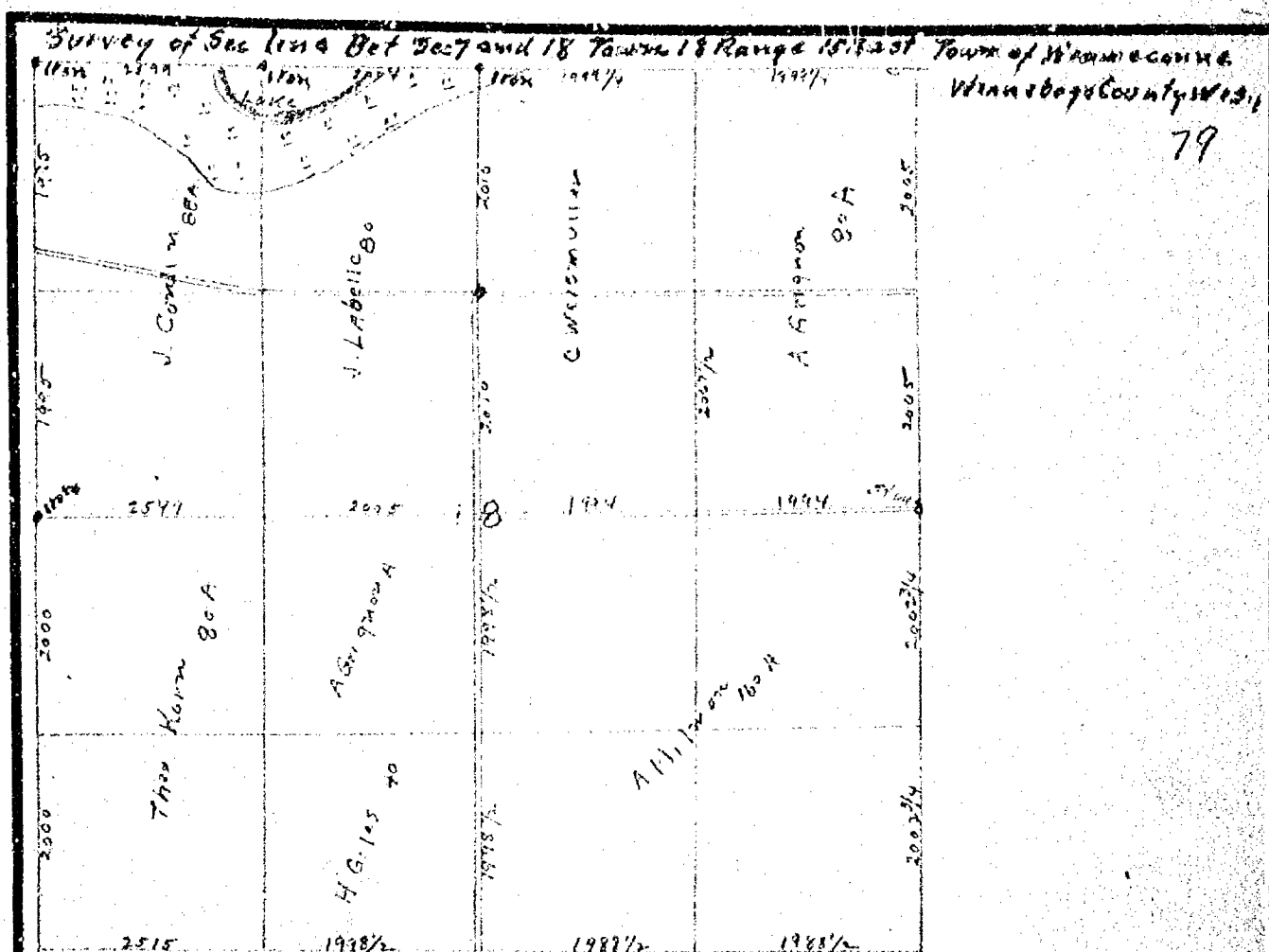


7-19-15



At the S W corner of NW 1/4 NE 1/4 I dug in Road and found an old stake set by former Co Surveyor verified by Chris Wisemuller the stake being badly decayed I set for new stake a 3/4 inch square iron Rod 4 ft long with L on top pointed to East drove it down level with the ground Bearings soft maple N 30° 20' W 25 links Dist I then ran North the No of chs called for in his survey and found a stump of willow and roots of Elm and his notes correct as to his notes could find no stake so I set a new stake by his notes of Bearings found a 1 1/4 inch gas pipe 4 ft long drove it down 3 1/2 ft in the ground I then ran west from this 1/4 S stake V 30° 30' the No of chains called for in Co Surveyors Notes which was 4603 chs I then went to 1/4 S on Range line bet Sec 13 and 18 and by taking the Co Surveyors Notes I found a point of an old stake beneath the surface I set for new stake at this point a 1 1/4 inch gas pipe 4 ft long drove it down 3 1/2 ft in the ground I then chained 3990 chs the No of chs called for in Co Surveyors Notes and at the intersection of those measurements I set the corner of Sec 12-13-7-18 set for stake a 4 1/2 inch Boiler flue 7 1/2 ft long drove it in the marsh 6 ft and at the NE corner of NW 1/4 NW 1/4 Sec 18 I set for 1/8 stake a 4 1/2 inch Boiler flue 7 1/2 ft long drove it 6 ft in the ground through the ice. Began Dec 3rd 1910 Completed Dec 5th 1910

W W Gould Co Surveyor
F Eightfoot Chainmen
Robert Gsbauer
Theo Korn Flagman

CITY OF OSHKOSH
ENGINEERING DEPARTMENT

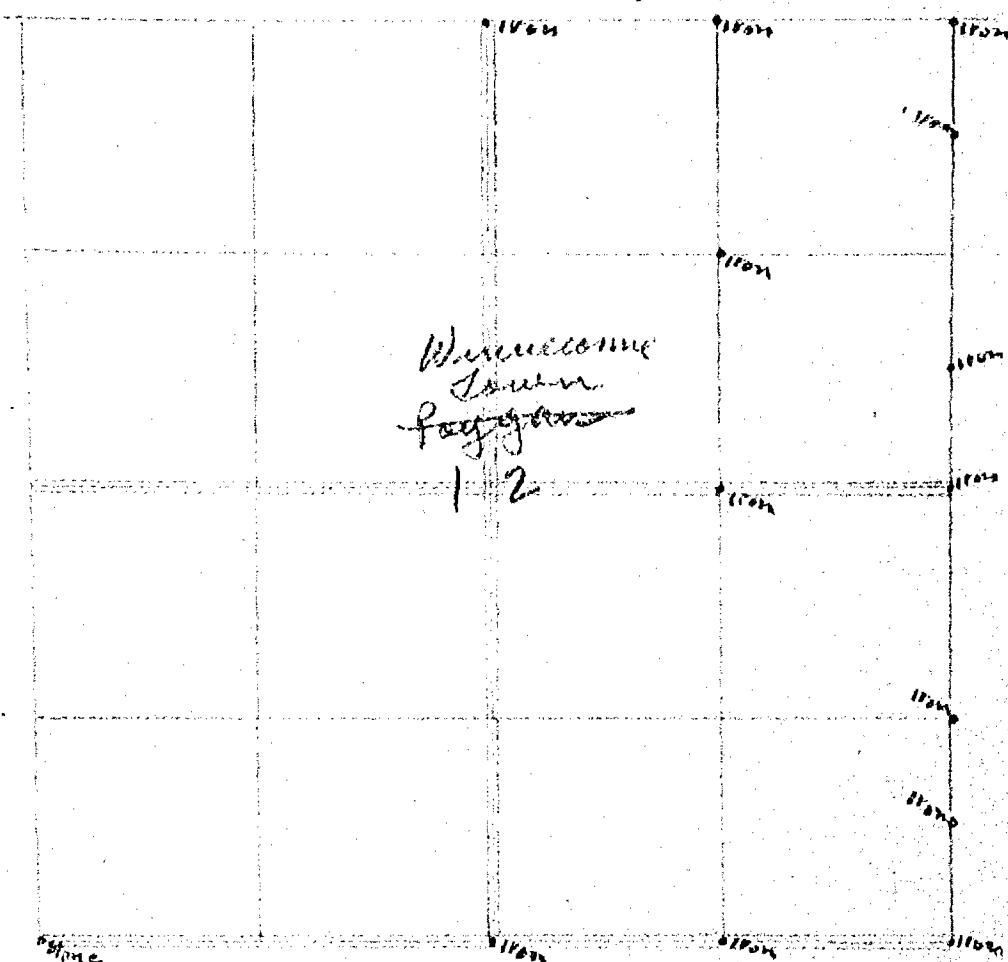
DRAY'N

SCALE

SURVEY OF SEC LINE BET SEC 7 AND 18
TOWN 19 RANGE 15 EAST TOWNSHIP OF WINNECONNE
WINNEBAGO COUNTY WIS.

SETTING OF STAKES ON RANGE LINE BETWEEN SEC 7 AND 12
TOWNSHIP NO 19 RANGE NO 15 AND 16 EAST

214-A



I found iron stakes at NE corner at 1/4 S and at SE corner of Sec 12 on Range line from those stakes I straighten out the line and set iron stakes on Range line south of 1/4 S one at 1/8 corner and one at 10.00 chs North from SE corner I Ran out the Range line North of 1/4 S and found the Iron stakes that had set April 9th 1908 had not been Removed and was in the proper place Began Dec 1st 1917 Completed Dec 1st 1917

W W Gould Co Surveyor
Frank Steiner Chainman
Louis Devens

CITY OF OSHKOSH
ENGINEERING DEPARTMENT

DRAWN

SCALE

SETTING OF STAKES ON RANGE LINE BET SEC
7 AND 12 TOWNSHIP NO 19 RANGE NO 15 AND 16
EAST TOWN OF WINNECONNE WINNEBAGO COUNTY
WIS.