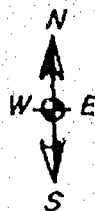
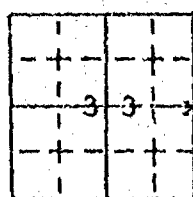


# WINNEBAGO COUNTY GOVERNMENT LAND CORNER CERTIFICATE

CORNER NO. 150  
SECTION 33  
TOWN 18 NORTH  
RANGE 16 EAST

TYPE OF MONUMENT Berntsen  
STATE PLANE COORDINATES: N \_\_\_\_\_  
S \_\_\_\_\_  
ELEVATION-M.S.L. DATUM: \_\_\_\_\_  
THETA ANGLE: \_\_\_\_\_  
FIELD BOOK \_\_\_\_\_ PAGE \_\_\_\_\_  
DRAWN BY: Lawrence C. Kriescher

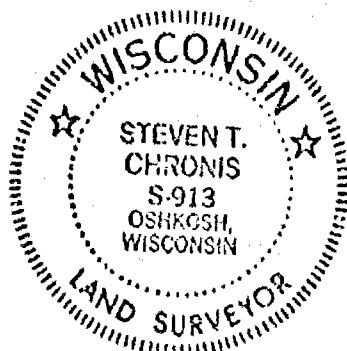


## BASIS FOR MONUMENT LOCATION - PROVIDE BELOW

HISTORY OF CORNER, WITH REFERENCE TO VOLUME AND PAGE, DATES, SURVEYOR; EXACT DESCRIPTION OF MONUMENT REPLACED; IF LOCATION COMPUTED BY TAPED OR EDM TRAVERSE; LANDOWNER, WITNESSES, REMARKS, ETC. (USE REVERSE SIDE)

Original post set by John Brink in Feb. 1835. County Surveyor Palmer in Oct. 1865 found post & again in May 1884. In early 1950 USH "41" was constructed & reference was made that the corner was 81' W. of centerline. In Sept. 1975 we found a bathey survey marker 81' off the centerline which the state must have set because I had found other bathey markers along the "41" project in Winnebago County. On Nov. 14, 1979 Winnebago County Berntsen Piston reference monuments were set and ties were taken. Bearing trees were searched for and none remain. A warning sign was mailed to the Anchor pole within 2' of the monument.

SEAL:



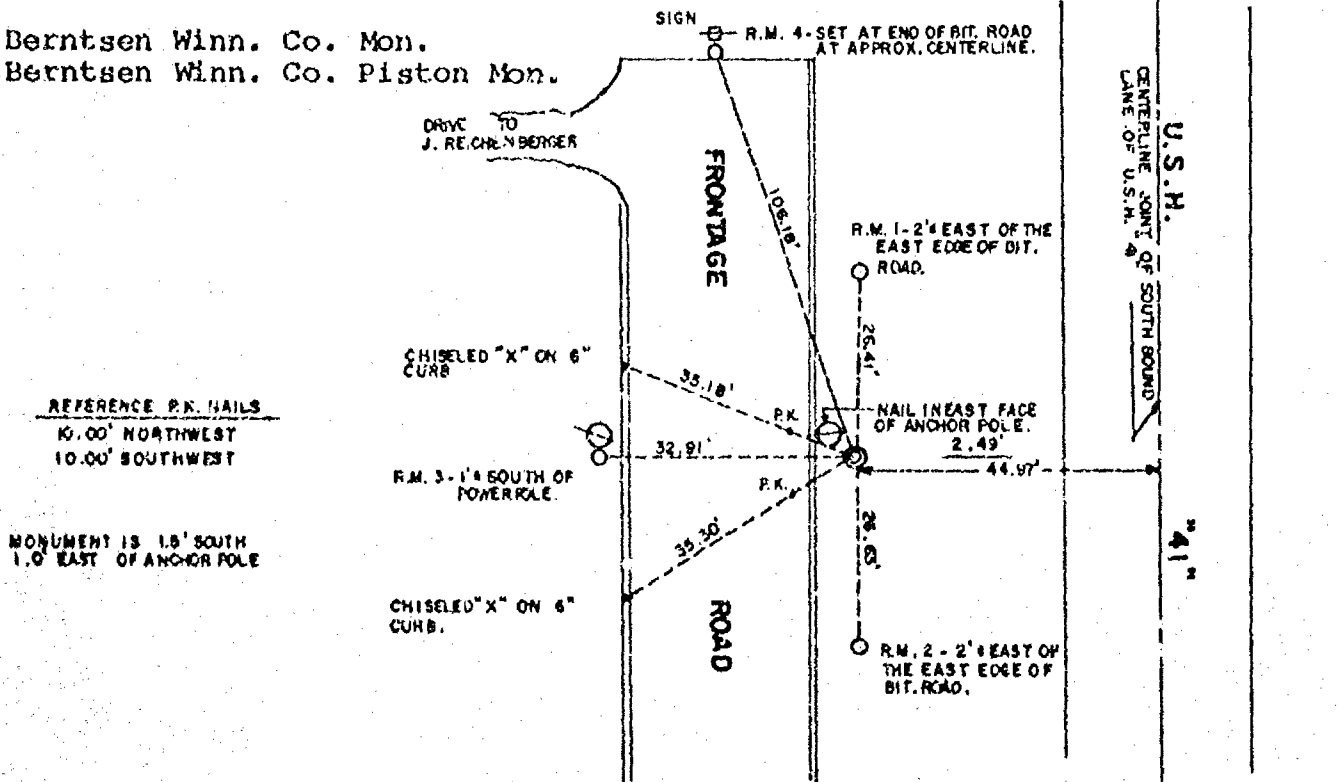
CERTIFIED CORRECT:

*Steven T. Chronis*  
REGISTERED LAND SURVEYOR  
DATE December 17, 1979

## TIE SKETCH

SHOW AT LEAST FOUR TIES, ALSO FENCE LINES, ROADS, TOPO, SIZE AND TYPE OF WITNESS TREES AND ANY OTHER PERTINENT SITE DETAILS. IF OFF THE ROAD, THE BEST WAY TO ARRIVE AT THE CORNER.

- ⊙ Berntsen Winn. Co. Mon.
- Berntsen Winn. Co. Piston Mon.





**WINNEBAGO COUNTY  
GOVERNMENT LAND CORNER CERTIFICATE**

TYPE OF MONUMENT BERNTSEN

STATE PLANE COORDINATES: N                       
S                     

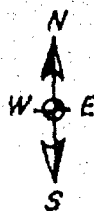
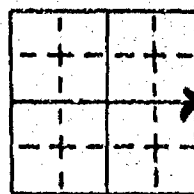
ELEVATION - M.S.L. DATUM:                     

THETA ANGLE:                     

FIELD BOOK                      PAGE                     

DRAWN BY:                     

CORNER NO. 150  
SECTION 33  
TOWN 18 NORTH  
RANGE 16 EAST

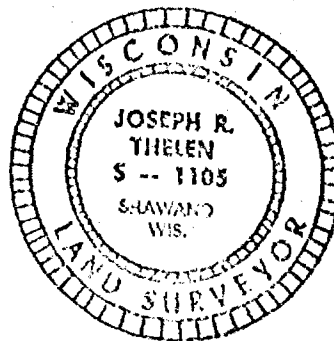


**BASIS FOR MONUMENT LOCATION - PROVIDE BELOW**

HISTORY OF CORNER, WITH REFERENCE TO VOLUME AND PAGE, DATES, SURVEYOR; EXACT DESCRIPTION OF MONUMENT REPLACED; IF LOCATION COMPUTED BY TAPED OR EDM TRAVERSE; LANDOWNER, WITNESSES, REMARKS, ETC. (USE REVERSE SIDE)

Original post set by John Brink in Feb. 1835. County Surveyor Palmer in Oct. 1865 found post and again in May 1884. In early 1950 USH "41" was constructed and reference was made that the corner was 81' W. of centerline. In Sept. 1975 S. Chronis found a bathey survey marker 81' off the centerline which the State must have set because he had found other bathey markers along the "41" project in Winnebago County. On Nov. 14, 1979 Winnebago County Berntsen Piston reference monuments were set and ties were taken. Nov. 1993, WisDOT reset new Berntsen monument at corner location from remaining ties and project control. New witness monuments set.

SEAL:

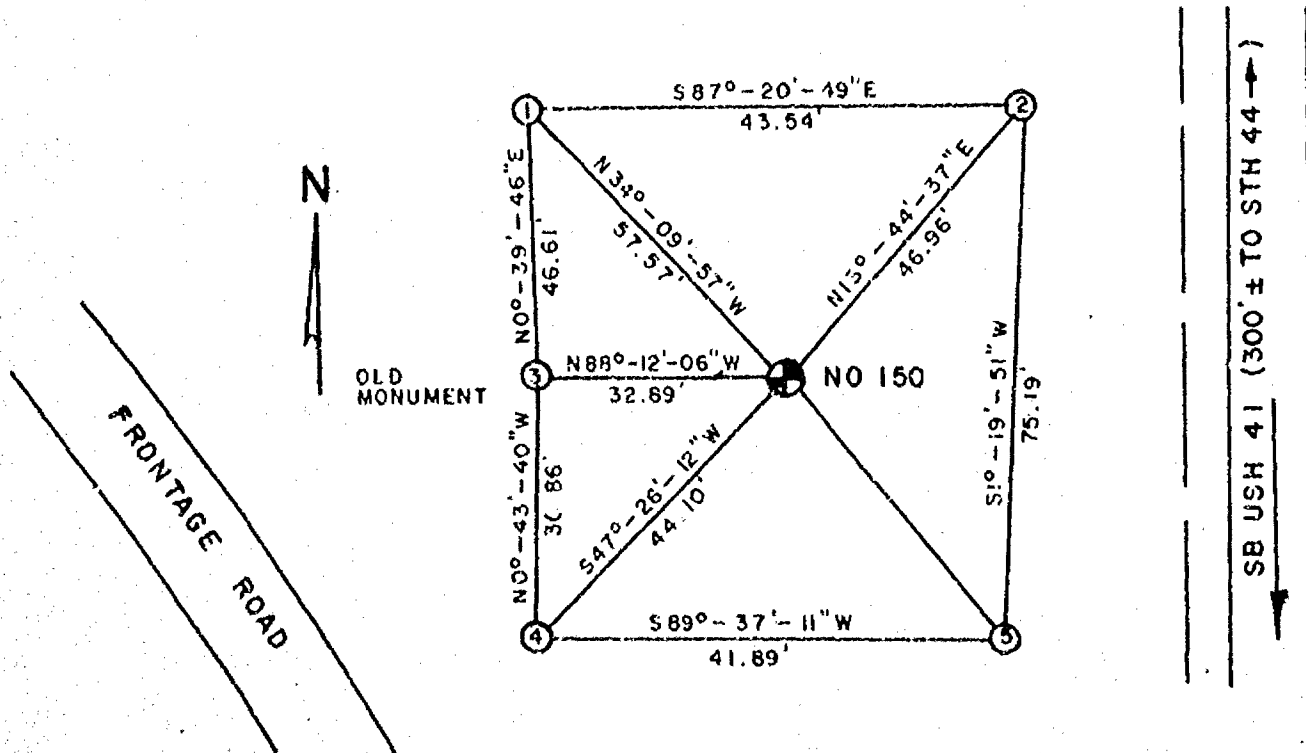


CERTIFIED CORRECT

*Joseph R. Thelen*  
REGISTERED LAND SURVEYOR  
DATE 6-15-94

**TIE SKETCH**

SHOW AT LEAST FOUR TIES, ALSO FENCE LINES, ROADS, TOPO, SIZE AND TYPE OF WITNESS TREES AND ANY OTHER PERTINENT SITE DETAILS. IF OFF THE ROAD, THE BEST WAY TO ARRIVE AT THE CORNER.



# MAINTENANCE RECORD

[illegible]