

CITY OF OSHKOSH - 1th Ward  
Section 26 T18N R16E

*Oxford* PENDACLEX

HANGING FOLDERS



NO. 1571/5

1968

26 - 18 - 16



SURVEY INDEX, WINNEBAGO COUNTY, WISCONSIN

SURVEYED FOR	SURVEYOR	R.L.S. NO.	DATE	CERTIFIED SURVEYS			NO.	SURVEY LOCATION
				MAP	NO	VOL PAGE		
Oshkosh	Wheeler	5-13-75	Leach's Map					Lot 54
Leach's	Chronos	6-1-77	Leach's + Lot					" 26
Oshkosh Bldg	Chronos	7-25-77	Leach's Smith's					" 23, 24 Block 4
Carl Granger	Chronos	7-22-77	Original 3rd Ward					" 1, 2 " 60
Tenn Dev	Chronos	9-27-78	Smith's Groc.					" 13 " 41
Rob Nelson			Smith's Add.					" 38
R. Webster	Kochling	10-2-80	Oshkosh Add					" 29 " 113
	Kochling	9-26-79						Tract # 2 # 489914
	Kochling	8-10-79	John Smith's Add					Lot 24
	Kochling	7-27-79						Tract # 2 # 1, 410
J. Kienast	Chronos	11-9-76	Leach's Map					Lots 49-51
Schmidt/Leach	Chronos	1-24-77	Oshkosh Add					" 37 " 113
Len Radke	Reider	7-7-78	Leach's 521445	1	410			Lot 8 SW-NW 1/4
Meier Saurige	Chronos	4-20-77	Original 3rd Ward					" 10-12 " 107
Dan Schott	Reider	8-29-78		523249	1	433		Tract 3
A. Schindler	Chronos	6-7-78		518178	1	358		Leach's Map Lot 48
Tom Knack	Chronos	2-16-78		514168	1	322		Lots Smith's Add Lot 49
J. Kienast	Kochling	10-17-80		556086	1	818		Morgan Plot Lots 35-42
C. Culbertson	Carl	1-20-81		561034	1	854		John Smith Lot 17
E. Berrell	Kochling	7-27-81						1314 Knapp
R. Schneider	Chronos	12-21-81						SW-NW Leach's Map

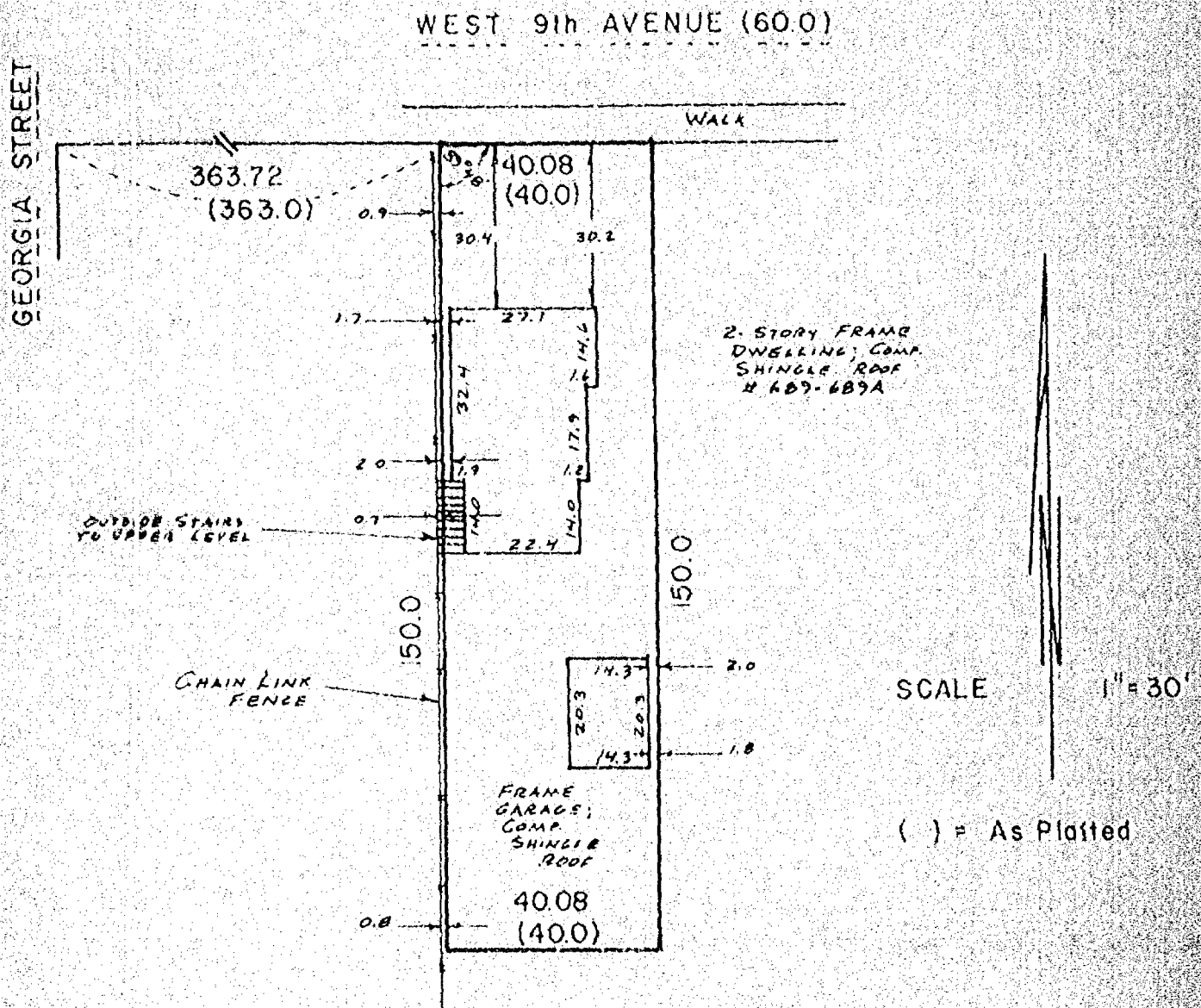
SECTION \_\_\_\_\_ TOWNSHIP \_\_\_\_\_ RANGE \_\_\_\_\_

9th

# PLAT OF SURVEY

KNOWN AS 689 WEST 9TH AVENUE, BEING THE NORTH 1/2 OF LOT 55 IN THE SUBDIVISION OF THE N.E. 1/4 OF THE N.W. 1/4 OF SECTION 26, T18N, R16E, IN THE 13TH WARD, CITY OF OSHKOSH, WINNEBAGO COUNTY, WISCONSIN, PER LEACH'S MAP OF 1894.

FEBRUARY 14, 1984 SURVEY FOR OSHKOSH SAVINGS SURVEY NO. 1393-M  
APPLICANTS: FILLMORE & FOEHLMAN  
MONUMENT WAIVER ON FILE

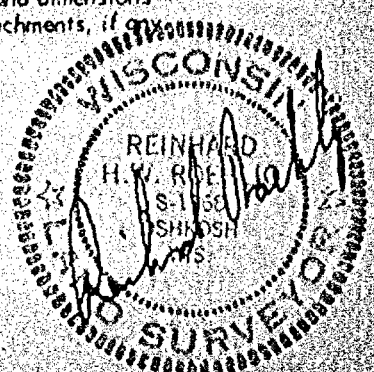


I Certify that I have surveyed the above described property (Property), and the above map is a true representation thereof and shows the size and location of the Property, its exterior boundaries, the location and dimensions of all visible structures thereon, boundary, fences, apparent easements and roadways and visible encroachments, if any. This survey is made for the exclusive use of the present owners of the Property, and also those who purchase, mortgage, or guarantee the title thereto, within one (1) year from date hereof.



**national survey & engineering**

417 NORTH SAWYER STREET / P.O. BOX 2963  
OSHKOSH, WISCONSIN 54903  
(414) 426-2800



—GEORGIA TRACE CONDOMINIUM—

LOT ONE (1) OF CERTIFIED SURVEY MAP NO 818, RECORDED IN VOLUME 1  
ON PAGE 818 OF CERTIFIED SURVEY MAPS, DOCUMENT NO 556086, BEING A  
PART OF LOTS 37, 38, 40 AND ALL OF LOT 39 IN MORGAN PLAT. 14TH  
WARD, CITY OF OSHKOSH, WINNEBAGO COUNTY, WISCONSIN

CONTAINING 12,050.84 SQUARE FEET OF LAND.

AERO-METRIC ENGINEERING INC.

1041 SOUTH WASHBURN STREET  
OSHKOSH, WISCONSIN 54901

DATED THIS 23RD DAY OF OCTOBER 1984  
Lawrence C. Kriescher  
WISCONSIN REGISTERED LAND SURVEYOR S-1599  
LAWRENCE C. KRIESCHER

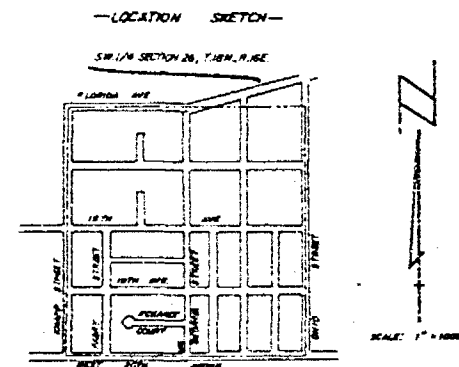
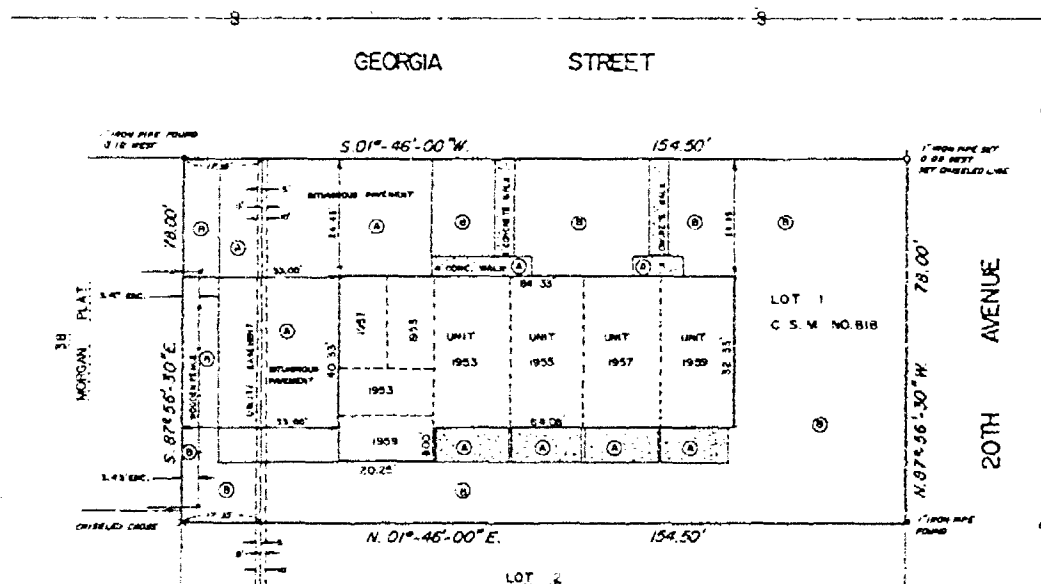


EXHIBIT "A"

THIS INSTRUMENT DRAFTED BY LAWRENCE C. KRIESCHER S-1599

SHEET 1 of 5

# —GEORGIA TRACE CONDOMINIUM—



AERO-METRIC ENGINEERING INC.  
1101 SOUTH WASHINGTON STREET  
OMAHA, NEBRASKA 68102

LOT 2  
C.S.M. NO. 818, VOL. 1 PAGE 818  
DOC. NO. 356086

EXHIBIT "B"

## SURVEYOR'S CERTIFICATE:

I, LAWRENCE C. KRIESCHER, WISCONSIN REGISTERED LAND SURVEYOR OF AERO-METRIC ENGINEERING, INC. DO HEREBY CERTIFY THAT I HAVE SURVEYED AND MARKED ACCORDING TO THE OFFICIAL RECORDS THE CONDOMINIUM DESCRIBED ON EXHIBIT "B" AND THAT THE DRAWING SHOWN IS A TRUE AND CORRECT REPRESENTATION OF THE CONDOMINIUM DESCRIBED. I FURTHER CERTIFY THAT THIS MAP IS A TRUE SCALED AND DIMENSIONAL REPRESENTATION OF THE BOUNDRIES, BUILDINGS AND IMPROVEMENTS, THE IDENTIFICATION AND LOCATION OF EACH UNIT AND THE COMMON ELEMENTS CAN BE DETERMINED.

THE ABOVE DESCRIBED PROPERTY IS SUBJECT TO ALL EASEMENTS OF RECORDED AND UNDEFINED UNDERGROUND UTILITY EASEMENTS, SUCH AS SANITARY SEWER LATERALS, WATER LATERALS, ELECTRICAL, TELEPHONE AND TV CABLES.

DATED THIS 23RD DAY OF OCTOBER, 1994

*Lawrence C. Kriescher*  
WISCONSIN REGISTERED LAND SURVEYOR S-1599  
LAWRENCE C. KRIESCHER

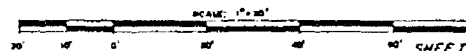


## LEGEND

- = 1" x 24" IRON PIPE WEIGHING 1.68 LBS. PER LINEAL FOOT SET.
- = 1" IRON PIPE FOUND
- = CHISELED CROSS FOUND
- = CHISELED LINE SET
- = UTILITY EASEMENT
- ① = LIMITED COMMON ELEMENTS
- ② = COMMON ELEMENT

ALL DISTANCES MEASURED TO THE NEAREST HUNDREDTH OF A FOOT

ALL BEARINGS REFERENCE TO THE WEST LINE OF GEORGIA STREET, RECORD NO. 810-1-1-1-1 (MORGAN PLAT)



1st Floor Plan of the Federal Office Building. The plan shows a large central area labeled 'UNIT 1956' with a total area of 1,101.56 sq. ft. To the right of this area are four smaller units: 'UNIT 1951' (1,101.56 sq. ft.), 'UNIT 1952' (1,091.48 sq. ft.), 'UNIT 1953' (1,091.48 sq. ft.), and 'UNIT 1954' (1,091.48 sq. ft.). To the left of the central area are two more units: 'UNIT 1955' (1,117.40 sq. ft.) and 'UNIT 1957' (1,101.56 sq. ft.). The plan also shows a large area on the right labeled 'UNIT 1958' with a total area of 1,101.56 sq. ft. The plan includes numerous rooms, corridors, and stairwells, with room numbers and names such as 'UNIT 1951', 'UNIT 1952', 'UNIT 1953', 'UNIT 1954', 'UNIT 1955', 'UNIT 1956', 'UNIT 1957', and 'UNIT 1958'. The plan is oriented with North at the top.

1. On 10/10/68, a letter from the FBI to the State Department, dated 10/10/68, was received. The letter was from the FBI to the State Department, dated 10/10/68, and was a letter from the FBI to the State Department, dated 10/10/68.

FIRST FLOOR PLAN

 $\frac{1}{8} \sim 10^3$ 

2. Subject      WILLIAM      1917      Male  
3. Signature      WILLIAM      1917      Male

AERO-METRIC ENGINEERING INC.  
1091 SOUTH WASHBURN STREET  
OSHKOSH, WISCONSIN 54901

THIS INSTRUMENT DRAFTED BY LAWRENCE C KRESCHER

EXHIBIT "C"  
SHEET 1 OF 31

DATED THIS 23rd DAY OF OCTOBER, 1966

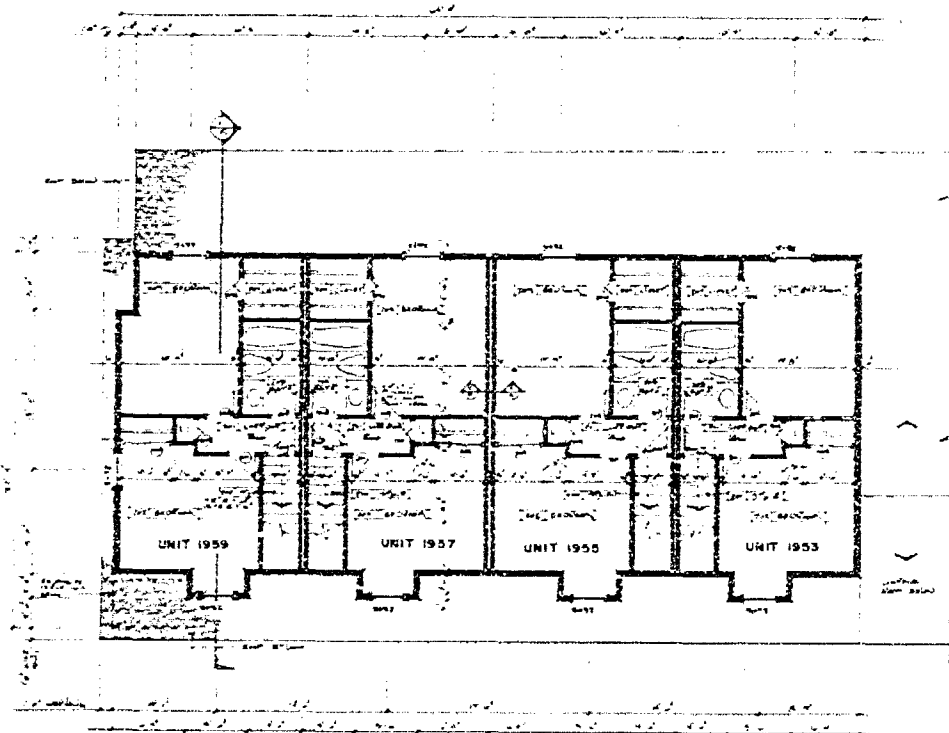
*Lawrence C. Kresche*  
WISCONSIN REGISTERED LAND SURVEYOR, S-1599  
LAWRENCE C. KRESCHER



SHEET 3 of 3

4-101-1001  
4-101-1002  
4-101-1003  
4-101-1004  
4-101-1005  
4-101-1006  
4-101-1007  
4-101-1008  
4-101-1009  
4-101-1010  
4-101-1011  
4-101-1012  
4-101-1013  
4-101-1014  
4-101-1015  
4-101-1016  
4-101-1017  
4-101-1018  
4-101-1019  
4-101-1020  
4-101-1021  
4-101-1022  
4-101-1023  
4-101-1024  
4-101-1025  
4-101-1026  
4-101-1027  
4-101-1028  
4-101-1029  
4-101-1030  
4-101-1031  
4-101-1032  
4-101-1033  
4-101-1034  
4-101-1035  
4-101-1036  
4-101-1037  
4-101-1038  
4-101-1039  
4-101-1040  
4-101-1041  
4-101-1042  
4-101-1043  
4-101-1044  
4-101-1045  
4-101-1046  
4-101-1047  
4-101-1048  
4-101-1049  
4-101-1050  
4-101-1051  
4-101-1052  
4-101-1053  
4-101-1054  
4-101-1055  
4-101-1056  
4-101-1057  
4-101-1058  
4-101-1059  
4-101-1060  
4-101-1061  
4-101-1062  
4-101-1063  
4-101-1064  
4-101-1065  
4-101-1066  
4-101-1067  
4-101-1068  
4-101-1069  
4-101-1070  
4-101-1071  
4-101-1072  
4-101-1073  
4-101-1074  
4-101-1075  
4-101-1076  
4-101-1077  
4-101-1078  
4-101-1079  
4-101-1080  
4-101-1081  
4-101-1082  
4-101-1083  
4-101-1084  
4-101-1085  
4-101-1086  
4-101-1087  
4-101-1088  
4-101-1089  
4-101-1090  
4-101-1091  
4-101-1092  
4-101-1093  
4-101-1094  
4-101-1095  
4-101-1096  
4-101-1097  
4-101-1098  
4-101-1099  
4-101-1100  
4-101-1101  
4-101-1102  
4-101-1103  
4-101-1104  
4-101-1105  
4-101-1106  
4-101-1107  
4-101-1108  
4-101-1109  
4-101-1110  
4-101-1111  
4-101-1112  
4-101-1113  
4-101-1114  
4-101-1115  
4-101-1116  
4-101-1117  
4-101-1118  
4-101-1119  
4-101-1120  
4-101-1121  
4-101-1122  
4-101-1123  
4-101-1124  
4-101-1125  
4-101-1126  
4-101-1127  
4-101-1128  
4-101-1129  
4-101-1130  
4-101-1131  
4-101-1132  
4-101-1133  
4-101-1134  
4-101-1135  
4-101-1136  
4-101-1137  
4-101-1138  
4-101-1139  
4-101-1140  
4-101-1141  
4-101-1142  
4-101-1143  
4-101-1144  
4-101-1145  
4-101-1146  
4-101-1147  
4-101-1148  
4-101-1149  
4-101-1150  
4-101-1151  
4-101-1152  
4-101-1153  
4-101-1154  
4-101-1155  
4-101-1156  
4-101-1157  
4-101-1158  
4-101-1159  
4-101-1160  
4-101-1161  
4-101-1162  
4-101-1163  
4-101-1164  
4-101-1165  
4-101-1166  
4-101-1167  
4-101-1168  
4-101-1169  
4-101-1170  
4-101-1171  
4-101-1172  
4-101-1173  
4-101-1174  
4-101-1175  
4-101-1176  
4-101-1177  
4-101-1178  
4-101-1179  
4-101-1180  
4-101-1181  
4-101-1182  
4-101-1183  
4-101-1184  
4-101-1185  
4-101-1186  
4-101-1187  
4-101-1188  
4-101-1189  
4-101-1190  
4-101-1191  
4-101-1192  
4-101-1193  
4-101-1194  
4-101-1195  
4-101-1196  
4-101-1197  
4-101-1198  
4-101-1199  
4-101-1200  
4-101-1201  
4-101-1202  
4-101-1203  
4-101-1204  
4-101-1205  
4-101-1206  
4-101-1207  
4-101-1208  
4-101-1209  
4-101-1210  
4-101-1211  
4-101-1212  
4-101-1213  
4-101-1214  
4-101-1215  
4-101-1216  
4-101-1217  
4-101-1218  
4-101-1219  
4-101-1220  
4-101-1221  
4-101-1222  
4-101-1223  
4-101-1224  
4-101-1225  
4-101-1226  
4-101-1227  
4-101-1228  
4-101-1229  
4-101-1230  
4-101-1231  
4-101-1232  
4-101-1233  
4-101-1234  
4-101-1235  
4-101-1236  
4-101-1237  
4-101-1238  
4-101-1239  
4-101-1240  
4-101-1241  
4-101-1242  
4-101-1243  
4-101-1244  
4-101-1245  
4-101-1246  
4-101-1247  
4-101-1248  
4-101-1249  
4-101-1250  
4-101-1251  
4-101-1252  
4-101-1253  
4-101-1254  
4-101-1255  
4-101-1256  
4-101-1257  
4-101-1258  
4-101-1259  
4-101-1260  
4-101-1261  
4-101-1262  
4-101-1263  
4-101-1264  
4-101-1265  
4-101-1266  
4-101-1267  
4-101-1268  
4-101-1269  
4-101-1270  
4-101-1271  
4-101-1272  
4-101-1273  
4-101-1274  
4-101-1275  
4-101-1276  
4-101-1277  
4-101-1278  
4-101-1279  
4-101-1280  
4-101-1281  
4-101-1282  
4-101-1283  
4-101-1284  
4-101-1285  
4-101-1286  
4-101-1287  
4-101-1288  
4-101-1289  
4-101-1290  
4-101-1291  
4-101-1292  
4-101-1293  
4-101-1294  
4-101-1295  
4-101-1296  
4-101-1297  
4-101-1298  
4-101-1299  
4-101-1300  
4-101-1301  
4-101-1302  
4-101-1303  
4-101-1304  
4-101-1305  
4-101-1306  
4-101-1307  
4-101-1308  
4-101-1309  
4-101-1310  
4-101-1311  
4-101-1312  
4-101-1313  
4-101-1314  
4-101-1315  
4-101-1316  
4-101-1317  
4-101-1318  
4-101-1319  
4-101-1320  
4-101-1321  
4-101-1322  
4-101-1323  
4-101-1324  
4-101-1325  
4-101-1326  
4-101-1327  
4-101-1328  
4-101-1329  
4-101-1330  
4-101-1331  
4-101-1332  
4-101-1333  
4-101-1334  
4-101-1335  
4-101-1336  
4-101-1337  
4-101-1338  
4-101-1339  
4-101-1340  
4-101-1341  
4-

—GEORGIA TRACE CONDOMINIUM—



→ ⊕ SECOND FLOOR PLAN 1/8" = 1'-0"

DATED THIS 23RD DAY OF OCTOBER 1984

*Lawrence C. Kriescher*  
WISCONSIN REGISTERED LAND SURVEYOR, S-1539  
LAWRENCE C. KRIESCHER

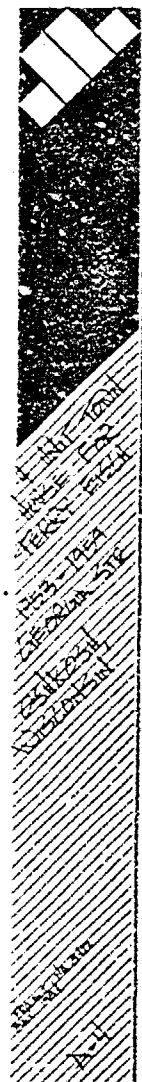


AERO-METRIC ENGINEERING INC.  
1031 SOUTH WASHBURN STREET  
OSHKOSH, WISCONSIN 54901

EXHIBIT "C"  
(SHEET 2 of 3)

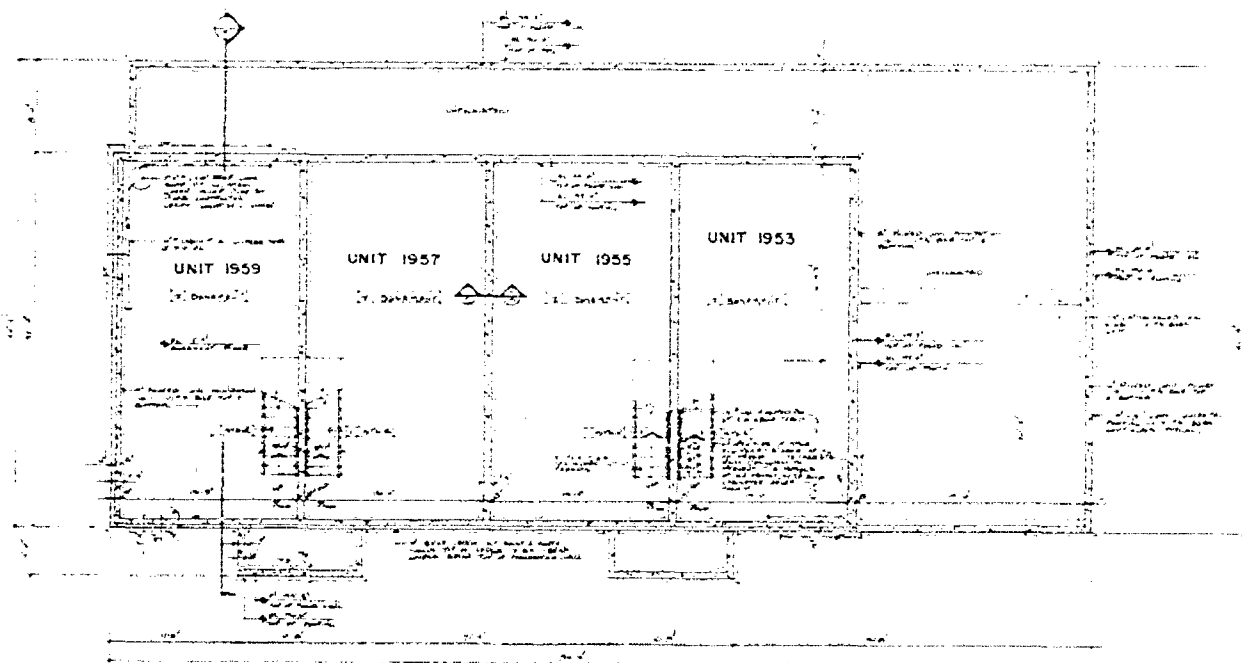
THIS INSTRUMENT DRAFTED BY LAWRENCE C. KRIESCHER


SHEET 4 of 5





— GEORGIA TRACE CONDOMINIUM —



—  BASEMENT & FOUNDATION PLAN 1/8"=1'-0"

NOT TO SCALE. SEE EXHIBIT "C" FOR UNIT 1959. SEE EXHIBIT "D" FOR UNIT 1953. SEE EXHIBIT "E" FOR UNIT 1955. SEE EXHIBIT "F" FOR UNIT 1957.

DATED THIS 29th DAY OF OCTOBER, 1994

*Lawrence C. Kriescher*  
WISCONSIN REGISTERED LAND SURVEYOR, S-1599  
LAWRENCE C. KRIESCHER

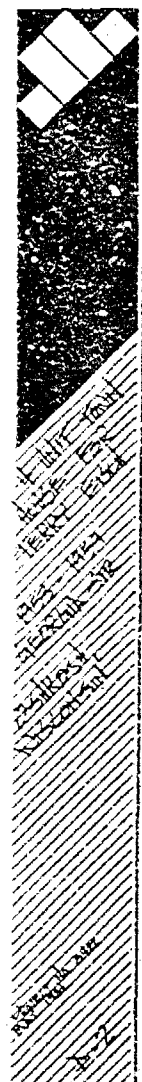


AERO-METRIC ENGINEERING INC.  
1091 SOUTH WASHBURN STREET  
OSHKOSH, WISCONSIN 54901

EXHIBIT "C"  
(SHEET 3 OF 3)

THIS INSTRUMENT DRAFTED BY LAWRENCE C. KRIESCHER

SHEET 5 of 5



**RESTRICTION :** LOT "1" IS RESTRICTED IN THAT IT MUST BE CONVEYED TO AND BECOME A PART OF THE EAST 75 FEET OF THE NORTH 291.8' OF LOT 43 IN THE NW1/4 OF THE SW1/4 OF SECTION 26, T.18N., R.16E., 13th WARD, CITY OF OSHKOSH PER LEACH'S MAP OF 1894



STATE OF WISCONSIN )  
WINNEBAGO COUNTY ) SS

Sheet 2 of 2

SURVEYOR'S CERTIFICATE:

I, Lawrence C. Kriescher, Wisconsin Registered Land Surveyor of Aero-Metric Engineering, Inc., certify that I have surveyed, divided and mapped under the direction of Fred Schmidt, Century 21-All Star Realty, all of Lot Forty-Four (44) in the Subdivision of the Northwest Quarter (NW $\frac{1}{4}$ ) of the Southwest Quarter (SW $\frac{1}{4}$ ) of Section Twenty-Six (26), Township Eighteen (18) North, Range Sixteen (16) East, Thirteenth (13th) Ward, City of Oshkosh per Leach's Map of 1894, Winnebago County, Wisconsin containing 39,410.846 square feet of land and being described by: Commencing at the West Quarter (W $\frac{1}{4}$ ) corner of said Section 26, thence S. 89°-43'-43" E. 918.51 feet to a point on the extended West line of said Lot 44, thence S. 00°-01'-15" E. 30.00 feet along the extended West line of said Lot 44 to a point on the South line of Florida Avenue and the true point of beginning, thence S. 89°-43'-43" E. 135.10 feet along the South line of Florida Avenue, thence S. 00°-00'-09" W. 291.73 feet, thence N. 89°-47'-07" W. 134.98 feet, thence N. 00°-01'-15" W. 291.91 feet to the true point of beginning.

That such is a correct representation of all exterior boundaries of the land surveyed.

That I have fully complied with the provisions of Chapter 236.34 of the Wisconsin Statutes and the Land Subdivision Ordinance of the City of Oshkosh in surveying and mapping the same.

Dated this 10th day of MARCH, 1984

Lawrence C. Kriescher  
Wisconsin Registered Land Surveyor S-1599  
Lawrence C. Kriescher



OWNER'S CERTIFICATE:

As owner, I hereby certify that I caused the land described on this Certified Survey Map to be surveyed, divided and mapped as represented on this map.

Dated this 16th day of April, 1984

In the Presence of:

Roland T. Schroeder  
Roland T. Schroeder

STATE OF WISCONSIN )  
WINNEBAGO COUNTY ) SS

Personally came before me this 16th day of April, 1984, the above named Roland T. Schroeder to me known to be the person who executed the foregoing instrument and acknowledged the same.

Fred Schmidt  
Notary Public, Winnebago County, Wisconsin  
My Commission Expires JUNE 29, 1986

CITY PLANNING COMMISSION CERTIFICATE:

This Certified Survey Map of all of Lot 44 of the Subdivision of the NW $\frac{1}{4}$  of the SW $\frac{1}{4}$  of Section 26, T.18N., R.16E., 13th Ward, City of Oshkosh per Leach's Map of 1894, Roland T. Schroeder owner, is hereby approved.

Date

4/12/84

Paul Ehrfurth  
Secretary of Planning Commission

609005

Register's Office  
Winnebago County, Wis.  
Received for record this *17<sup>th</sup>*  
day of *April*, A.D., 19*84*  
at *12:32* o'clock *A.*-M. and  
recorded in Vol. *1* of *S.M.*  
on page *1232*  
*Bernice Adams*  
Register of Deeds

*Fred Schmidt*

*Pl.*  
*6.00*



**CERTIFIED SURVEY MAP**  
for  
**LuVern Kienast**

Sheet 1 of 3

STATE OF WISCONSIN )  
WINNEBAGO COUNTY ) SS

See sheets 2 and 3  
for description

Dated this 7th day of November, 1976

43.

LEACH'S MAP OF 1894.

Wisconsin Registered Land Surveyor  
Steven T. Chronis

DIENER 8

SECOND 5

BLK. 2

STEVEN T. CHRONIS

ADDITION 10

BLK. 3

INTERIOR ANGLES  
TRACTS 2,3,4

- 1 = 89°-55'-42"
- 2 = 90°-04'-18"
- 3 = 137°-27'-29"
- 4 = 132°-26'-58"
- 5 = 90°-50'-54"
- 6 = 179°-14'-35"

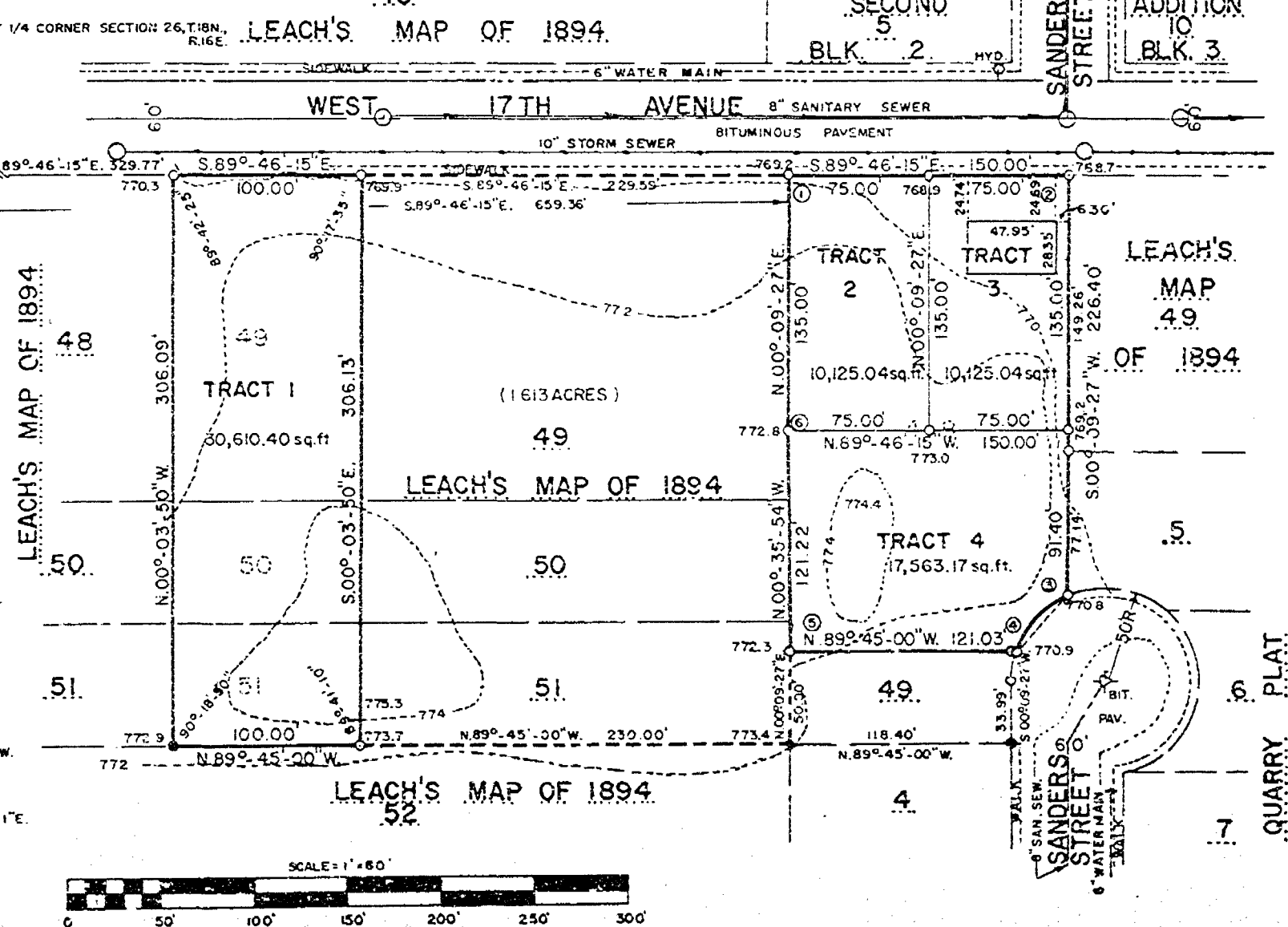
ALL BEARINGS REFERENCED TO THE WEST LINE  
OF THE SW 1/4, SECTION 26, T.18N., R.16E., ASSUMED  
TO BEAR NORTH

## LEGEND

- = 1"x24" IRON PIPE WEIGHING  
1.68 LBS. PER LINEAL FOOT
- = 1" IRON PIPE FOUND
- = 3/4" IRON PIPE FOUND
- DATE: NOV. 4, 1976

## CURVE DATA 3-4

RADIUS = 50.00'  
CHORD BEARING = S. 42° 41' 58" W.  
CHORD LENGTH = 40.48'  
CENTRAL ANGLE = 57° 45' 14"  
ARC DISTANCE = 41.67'  
TANGENT BEARING = N. 18° 49' 21" E.



STATE OF WISCONSIN )  
WINNEBAGO COUNTY ) SS

**SURVEYOR'S CERTIFICATE:**

I, Steven T. Chronis, Wisconsin registered land surveyor of Aero-Metric Engineering, Inc., hereby certify that I have surveyed, divided and mapped:

**Tract 1**

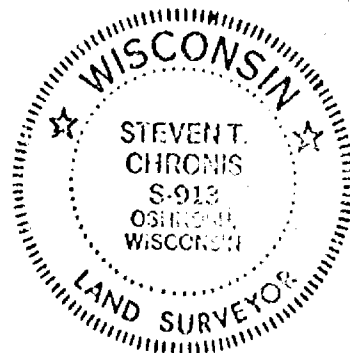
A part of lots 49, 50 and 51 of the subdivision of the Northwest Quarter (NW $\frac{1}{4}$ ) of the Southwest Quarter (SW $\frac{1}{4}$ ) of Section Twenty-Six (26), Township Eighteen (18) North, Range Sixteen (16) East, per Leach's Map of 1894, Thirteenth (13th) Ward, City of Oshkosh, Winnebago County, Wisconsin containing 30,610.40 square feet of land and being described by: Commencing at the West Quarter (W $\frac{1}{4}$ ) Corner of said Section 26, thence South 695.91 feet along the West line of the SW $\frac{1}{4}$  of said Section 26 to its intersection with the South line of West 17th Avenue extended, thence S. 89°-46'-15" E. 329.77 feet along the South line of West 17th Avenue to the Northwest Corner of said Lot 49 and the true point of beginning, thence continue S. 89°-46'-15" E. 100.00 feet along the South line of West 17th Avenue, thence S. 00°-03'-50" E. 306.13 feet to a point on the South line of said Lot 51, thence N. 89°-45'-00" W. 100.00 feet along the South line of said Lot 51, thence N. 00°-03'-50" W. 306.09 feet along the West line of said Lot 49 and its extension thereof to the true point of beginning.

**Tracts 2, 3, and 4**

Being a part of Lot 49 of the subdivision of the Northwest Quarter (NW $\frac{1}{4}$ ) of the Southwest Quarter (SW $\frac{1}{4}$ ) of Section Twenty-Six (26), Township Eighteen (18) North, Range Sixteen (16) East per Leach's Map of 1894, Thirteenth (13th) Ward, City of Oshkosh, Winnebago County, Wisconsin containing 37,813.25 square feet of land and being described by: Commencing at the W $\frac{1}{4}$  Corner of said Section 26, thence South 695.91 feet along the West line of the SW $\frac{1}{4}$  of said Section 26, to a point on the extended South line of West 17th Avenue, thence S. 89°-46'-15" E. 659.36 feet along the South line of West 17th Avenue to the true point of beginning, thence continue S. 89°-46'-15" E. 150.00 feet along the South line of West 17th Avenue, thence S. 00°-09'-27" W. 226.40 feet along the East line of lands recorded in Volume 1197 page 409 of Deeds to a point on the Northerly line of Sanders Street, thence Southwesterly 41.67 feet along the arc of a curve to the left being the Northerly line of Sanders Street having a radius of 50.00 feet and the chord of which bears S. 42°-41'-58" W. 40.48 feet, thence N. 89°-45'-00" W. 121.03 feet, thence N. 00°-35'-54" W. 121.22 feet, thence N. 00°-09'-27" E. 135.00 feet to the true point of beginning.

Dated this 9<sup>th</sup> day of November, 1976.

Steven T. Chronis  
Wisconsin Registered Land Surveyor S-913  
Steven T. Chronis



STATE OF WISCONSIN )  
WINNEBAGO COUNTY ) SS

**OWNER'S CERTIFICATE:**

As owner, I hereby certify that I caused the land described on this certified survey map to be surveyed, divided, and mapped as represented on this certified survey map.

WITNESS the hand and seal of said owner this 15<sup>th</sup> day of November, 1976.

In the presence of:

Lu Vern Kienast  
LuVern Kienast

STATE OF WISCONSIN )  
WINNEBAGO COUNTY ) SS

Personally came before me this 15<sup>th</sup> day of November, 1976, the above named LuVerne Kienast to me known to be the person who executed the foregoing instrument and acknowledged the same.

Notary Seal Converse G. Marks  
Notary Public, Winnebago, Wisconsin  
My commission expires Dec 8-1978

**CITY PLANNING COMMISSION CERTIFICATE:**

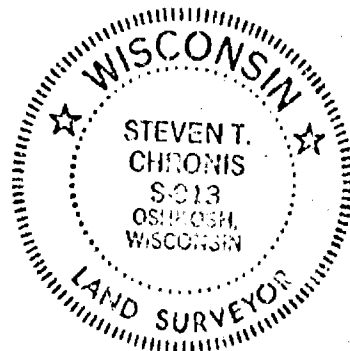
This certified survey map being a minor subdivision of a part of Lots 49, 50, and 51 of the subdivision of the NW $\frac{1}{4}$  of the SW $\frac{1}{4}$  of Section 26, T. 18 N., R. 16 E., per Leach's Map of 1894, 13th Ward, LuVerne Kienast, owner is hereby approved.  
NOW IN THE 14th WARD, CITY OF OSHKOSH,

Dated this 15<sup>th</sup> day of November, 1976.

David Wendtland  
David Wendtland  
Secretary of Planning Commission

Dated this 9<sup>th</sup> day of November, 1976.

Steven T. Chronis  
Wisconsin Registered Land Surveyor S-913  
Steven T. Chronis



*Zoning*

STATE OF WISCONSIN) SS  
WINNEBAGO COUNTY)

WINNEBAGO COUNTY CERTIFIED SURVEY MAP NO 1278

SHEET 1 of 2

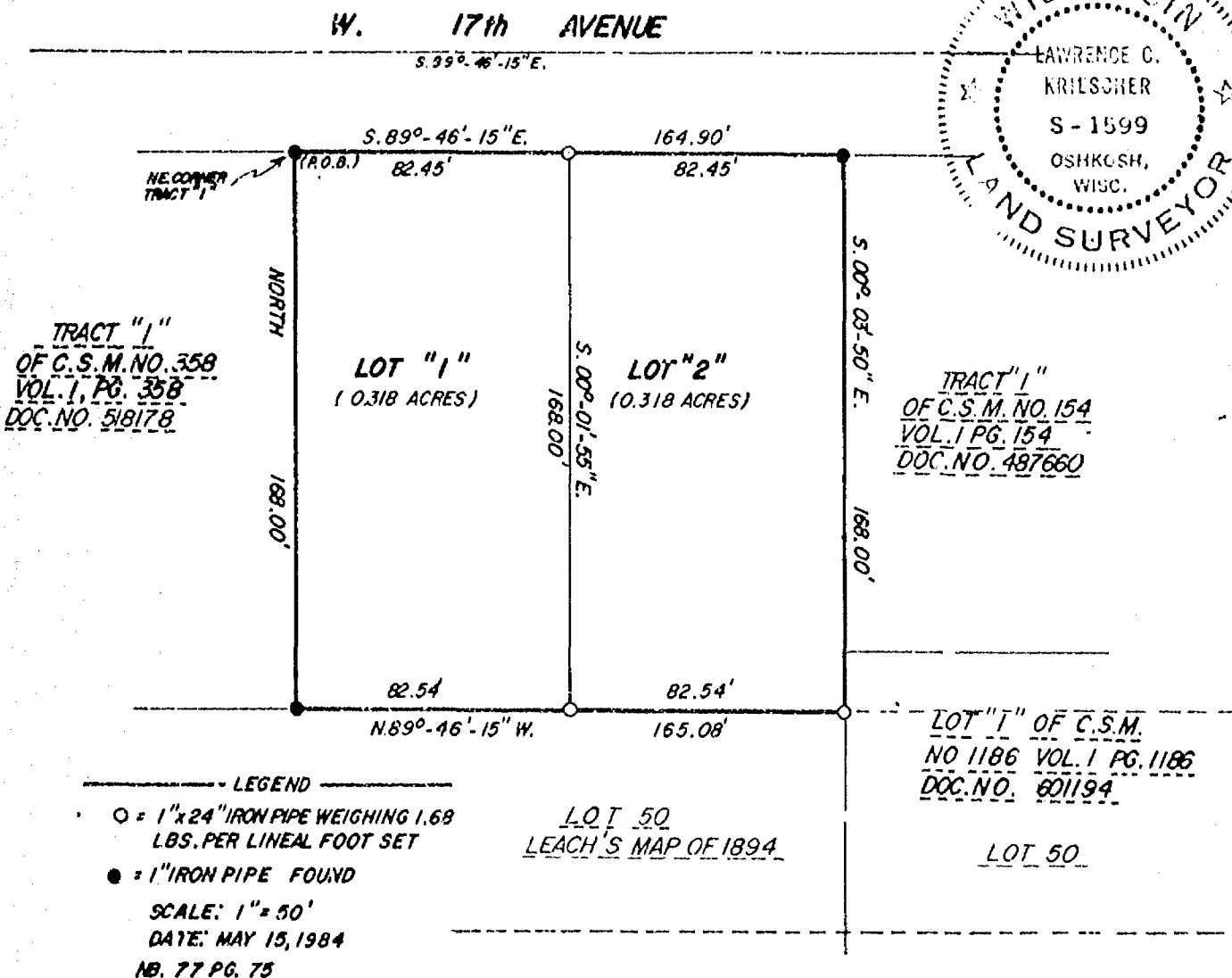
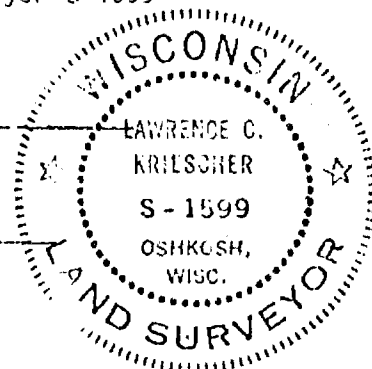
SURVEYOR'S CERTIFICATE:

I, Lawrence C. Kriescher, Wisconsin Registered Land Surveyor of Aero-Metric Engineering, Inc. certify that I have surveyed, divided and mapped under the direction of Albert Schoenberger a part of Lot 48, of the Subdivision of the Northwest Quarter (NW $\frac{1}{4}$ ) of the Southwest Quarter (SW $\frac{1}{4}$ ) of Section Twenty-Six (26), Township Eighteen (18) North, Range Sixteen (16) East, per Leach's Map of 1894, Thirteenth (13th) Ward, Now Fourteenth Ward, City of Oshkosh, Winnebago County, Wisconsin containing 0.636 Acres of land and being described by: Commencing at the Northeast corner of Tract "1" of Certified Survey Map Number 358, recorded in Volume 1, Page 358 of Certified Survey Maps, Document Number 518178 and being the true point of beginning, thence S. 89°-46'-15" E. 164.90 feet along the South line of West 17th Avenue, thence S. 00°-03'-50" E. 168.00 feet, thence N. 89°-46'-15" W. 165.08 feet, thence North 168.00 feet to the true point of beginning.

That such is a correct representation of all exterior boundaries of the land surveyed.  
That I have fully complied with the provisions of Chapter 236.34 of the Wisconsin Statutes and the Land Subdivision Ordinance of the City of Oshkosh in surveying and mapping the same.

Dated this 15TH day of MAY, 1984

*Lawrence C. Kriescher*  
Wisconsin Registered Land Surveyor S-1599  
Lawrence C. Kriescher



ALL BEARINGS REFERENCED TO THE EAST LINE OF TRACT "1",  
C.S.M. NO. 358, VOL. 1 PG. 358 DOC. NO. 518178 RECORDED AS  
NORTH.

AERO-METRIC ENGINEERING INC.

1091 SOUTH WASHBURN STREET  
OSHKOSH WISCONSIN 54901



OWNER'S CERTIFICATE:

As owners, we hereby certify that we caused the land described on this Certified Survey Map to be surveyed, divided and mapped as represented on this map.

Dated this 9<sup>th</sup> day of July, 1984

In the Presence of:

Fintan M. Flanagan  
Fintan M. Flanagan

Albert Schoenberger  
Albert Schoenberger

Denise Butler  
Denise Butler

Louise Schoenberger  
Louise Schoenberger

STATE OF WISCONSIN }  
WINNEBAGO COUNTY } SS

Personally came before me this 9<sup>th</sup> day of July, 1984, the above named Albert Schoenberger and Louise Schoenberger to me known to be the persons who executed foregoing instrument and acknowledged the same.

Fintan M. Flanagan  
Fintan M. Flanagan  
Notary Public Winnebago Co., Wisconsin  
My Commission ~~expires~~ is permanent

CITY PLANNING COMMISSION CERTIFICATE:

This Certified Survey Map of a part of Lot 48 of the Subdivision of the NW<sup>1</sup>/<sub>4</sub> of the SW<sup>1</sup>/<sub>4</sub> of Section 26, T.18N., R.16E., per Leach's Map of 1894, Thirteenth (13th) Ward, now Fourteen (14th) Ward, City of Oshkosh, Albert Schoenberger and Louise Schoenberger, owners, is hereby approved.

Date 6/12/84

Raul Ehrfurth  
Raul Ehrfurth  
Secretary of Planning Commission

Dated this 15TH day of MAY, 1984

Lawrence C. Kriescher  
Wisconsin Registered Land Surveyor S-1599  
Lawrence C. Kriescher

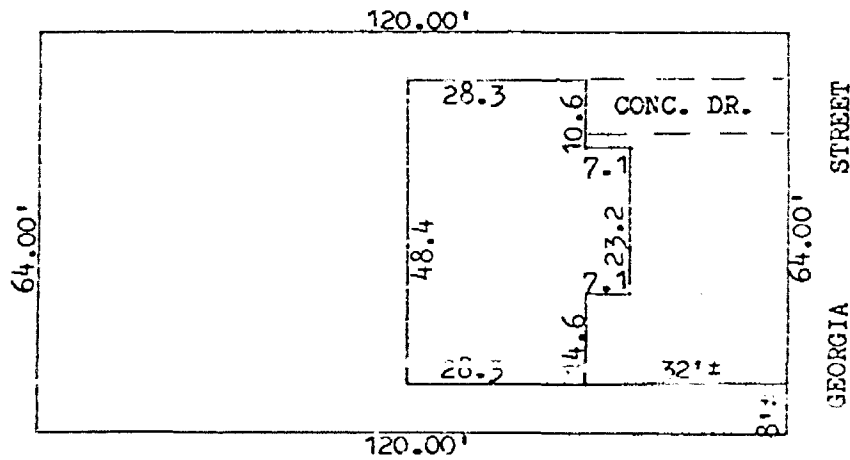


614386  
Register's Office  
Winnebago County, Wis.  
Received for record this 10<sup>th</sup>  
day of July, A.D., 1984  
at 8:00 o'clock A.M. and  
recorded in Vol. 1 of S.M  
on page 228

Register of Deeds  
Register of Deeds

Charge and  
return to:  
Atty. Fintan M. Flanagan  
404 N. Main Street  
Oshkosh, WI 54901

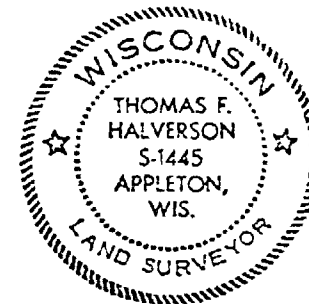
Lot 3 of Block 3 in Diener And Stelzner's 2nd Addition Lot 47 and Part of Lot 43 in the Subdivision of the N.W. 1/4 of the S. W. 1/4 of Sec. 26-18-16 Per Leach's Map of 1894 in the 13th Ward, City of Oshkosh, Winnebago County, Wisconsin.



ONE STORY HOUSE WITH ATTACHED GARAGE

NO BUILDING ENCROACHMENTS PRESENT

COONAN - 1643 GEORGIA ST. (84-3801)



I, THOMAS F. HALVERSON

certify that this mortgage inspection was made by me or under my direction and control of the described property on, FEBRUARY 14, 1984, according to the official records and that this drawing is a true representation of the principal building lines thereon and is accurate to the best of my knowledge and belief. Knutson Mortgage Corp., in agreement with Carow Land Surveying Co., Inc. has waived parts of Administrative Code A-E 5.01 (3 through 7). THIS IS NOT A BOUNDARY SURVEY NOR INTENDED TO BE. THIS MORTGAGE INSPECTION IS MADE FOR THE EXCLUSIVE USE OF: Knutson Mortgage & Financial Corp.

*Thomas F. Halverson*

3-13-84

REVISIONS	Knutson Mortgage & Financial Corp. P.O. Box 1893, Appleton, Wis. 54913-1893		
	CAROW LAND SURVEYING CO., INC. P.O. BOX 1297 1837 W. WISCONSIN AVE • APPLETON, WI 54912		
DRAWN BY th-pz APPD	TFH X	SCALE 1"=30' DATE 3-13-84	DRAWING NO 843.77

## Chapter A-E 5

## MINIMUM STANDARDS FOR PROPERTY SURVEYS

A-E 5.01 Minimum standards for property surveys      A-E 5.02 U.S. public land survey monument record

**A-E 5.01 Minimum standards for property surveys. (1) Scope.** The minimum standards of this section apply to every property survey performed in this state except that,

(a) Where other standards for property surveys are prescribed by statute, administrative rule or ordinance, then such standards shall govern; and

(b) The land surveyor and his or her client or employer may agree in a signed statement to exclude any land surveying work from the requirements of this section except the preparation of a U.S. Public Land Survey Monument Record, providing any map prepared by the land surveyor for the client or employer includes a note which states that an agreement to exclude work from the requirements of this section has been made, the names of the parties making the agreement and a description in plain language of the requirements not complied with.

(2) **PROPERTY SURVEY, DEFINITION.** In this section, "property survey" means any land surveying which includes as one of its principal purposes describing, monumenting, locating the boundary lines of or mapping one or more parcels of land. The term includes the restoration, perpetuation or reestablishment of a U.S. public survey corner.

(3) **BOUNDARY LOCATION.** Every property survey should be made in accordance with the records of the register of deeds as nearly as is practicable. The surveyor shall acquire data necessary to retrace record title boundaries such as deeds, maps, certificates of title, and center line and other boundary line locations. The surveyor shall analyze the data and make a careful determination of the position of the boundaries of the parcel being surveyed. The surveyor shall make a field survey, traversing and connecting monuments necessary for location of the parcel and coordinate the facts of such survey with the analysis. The surveyor shall set monuments marking the corners of such parcel unless monuments already exist at such corners.

(4) **DESCRIPTIONS.** Descriptions defining land boundaries written for conveyance or other purposes shall be complete, providing definite and unequivocal identification of lines or boundaries. The description must contain necessary ties to adjoining together with data of dimensions sufficient to enable the description to be mapped and retraced and shall describe the land surveyed by government lot, recorded private claim, quarter-quarter section, section, township, range and county, and by metes and bounds commencing with some corner marked and established by the U.S. public land survey; or if such land is located in a recorded subdivision or recorded addition thereto, then by the number or other description of the lot, block or subdivision thereof which has been previously tied to a corner marked and established by the U.S. public land survey.

Register, August, 1982, No. 320

Note: Items not underlined have been amended.

## WISCONSIN ADMINISTRATIVE CODE

A-E 1

(5) MAPS. A map shall be drawn for every property survey showing information developed by the survey and including the following elements:

(a) The map shall be drawn to a convenient scale;

(b) The map shall be referenced as provided in s. 59.61, Stats.;

(c) The map shall show the exact length and bearing of the boundaries of the parcels surveyed. Where the boundary lines show bearings, lengths or locations which vary from those recorded in deeds, abutting plats, or other instruments there shall be the following note placed along such lines, "recorded as (show recorded bearing, length or location)";

(d) The map shall show and describe all monuments necessary for the location of the parcel and shall indicate whether such monuments were found or placed;

(e) The map shall identify the person for whom the survey was made, the date of the survey, and shall describe the parcel as provided in (4), above;

(f) The map shall bear the stamp or seal and signature of the land surveyor under whose direction and control the survey was made with a statement certifying that the survey is correct to the best of his knowledge and belief.

**(6) MEASUREMENTS.** (a) Measurements shall be made with instruments and methods capable of attaining the required accuracy for the particular problem involved.

(b) The minimum accuracy of linear measurements between points shall be 1 part in 3,000 on all property lines of boundary or interior survey.

(c) In a closed traverse the sum of the measured angles shall agree with the theoretical sum by a difference not greater than 30 seconds per angle, or the sum of the total angles shall not differ from the theoretical sum by more than 120 seconds, whichever is smaller.

(d) Any closed traverse depicted on a property survey map shall have a latitude and departure closure ratio of less than 1 in 3,000.

(e) Bearings or angles on any property survey map shall be shown to the nearest minute; distances shall be shown to the nearest 1/100th foot.

(7) **MONUMENTS.** The type and position of monuments to be set on any survey shall be determined by the nature of the survey, the permanency required, the nature of the terrain, the cadastral features involved, and the availability of material.

History: Cr Register, June, 1974, No. 222, eff. 7-1-74; am. (5) (e) and (6) (e), Register, June, 1978, No. 234, eff. 7-1-78; am. (1) (b), Register, January, 1982, No. 313, eff. 2-1-82; am. (1) (b) and c. and rec. (2), Register, August, 1982, No. 320, eff. 9-1-82.

**A-E 5.02 U.S. public land survey monument record. (1) WHEN MONUMENT RECORD REQUIRED.** A U.S. public land survey monument record shall be prepared as part of any land survey which includes or requires the perpetuation, restoration or reestablishment of a U.S. public land survey corner, and, either,

Register, August, 1982, No. 320

STATE OF WISCONSIN )  
WINNEBAGO COUNTY ) SS

Sheet 1 of 2

Certified Survey Map #184

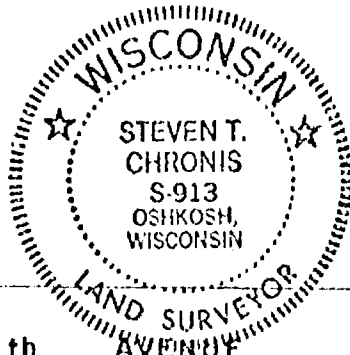
for

Meyer Sausage Company

SURVEYOR'S CERTIFICATE:

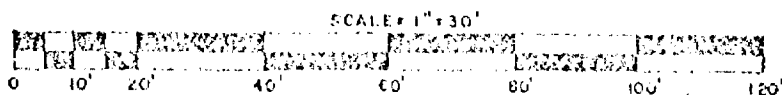
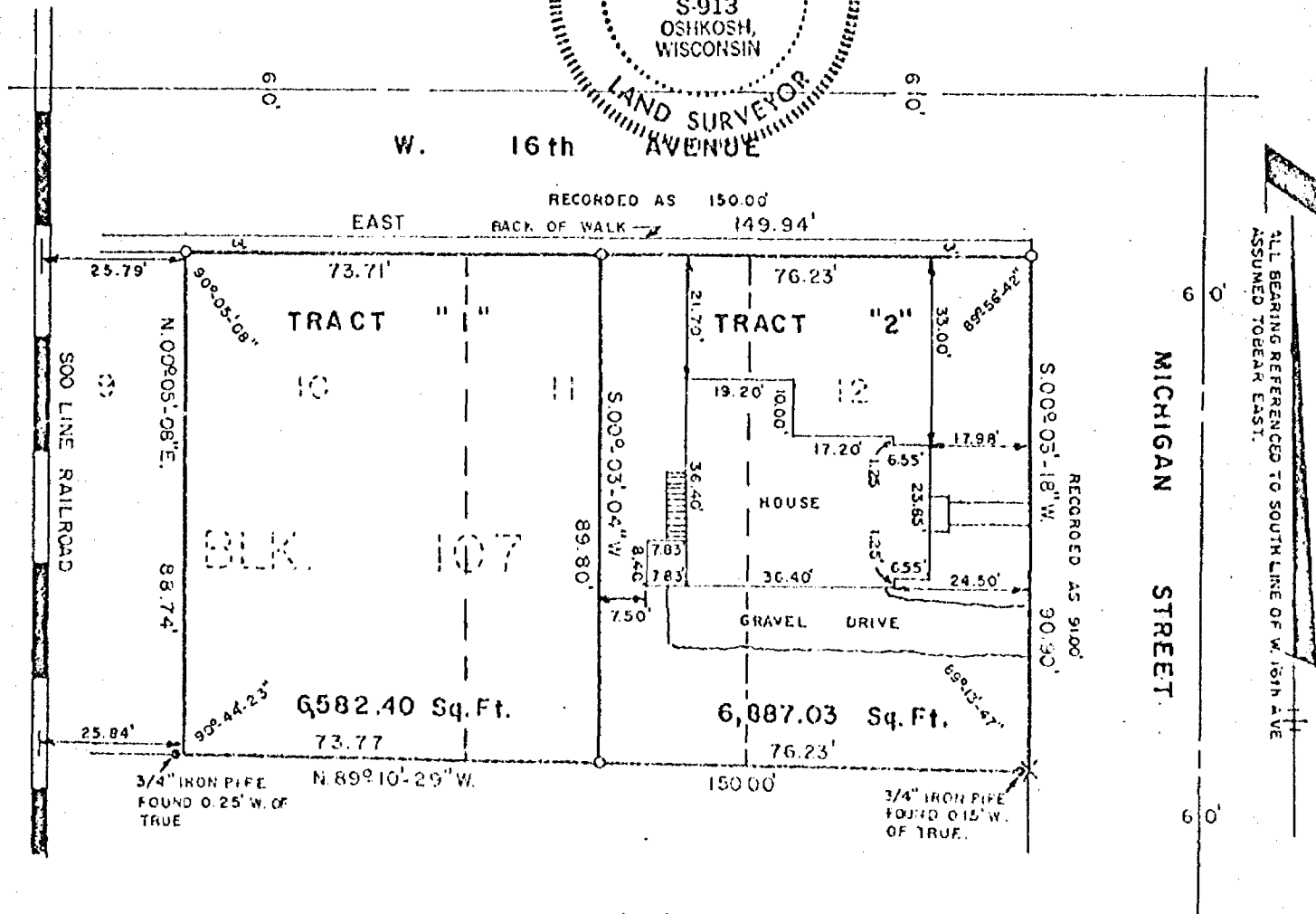
I, Steven T. Chronis, Wisconsin Registered Land Surveyor of Aero-Metric Engineering, Inc., hereby certify that I have surveyed, divided, and mapped all of Lots 10, 11, and 12 of Block 107 Plat of Original Third Ward per Leach's Map of 1894 and now in the Thirteenth (13th) Ward, City of Oshkosh, Winnebago County, Wisconsin containing 13,469.43 square feet and being described by: Commencing at the Northeast Corner of said Block 107, thence S. 00°-03'-18" W. 90.90 feet, recorded as 91.00 feet along the East Line of said Block 107, thence N. 89°-10'-29" W. 150.00 feet along the South Line of said Block 107, continued on Sheet 2 of 2

*Steven T. Chronis*  
Wisconsin Registered Land Surveyor S-913  
Steven T. Chronis



LEGEND

O = 1" x 24" IRON PIPE WEIGHING 1.68  
LBS. PER LINEAL FOOT.  
X = CHISELED X  
• = 3/4" IRON PIPE FOUND  
DATE=APRIL 20, 1977  
TOTAL AREA = 13,469.43 Sq. Ft  
ZONING INFORMATION: R-2



AERO-METRIC ENGINEERING INC.

5 OTTER AVENUE

OSHKOSH, WISCONSIN 54901

NOTEBOOK-22, PAGE 63-65

THIS INSTRUMENT DRAWN BY STEVEN T. CHRONIS S-913

L-225



STATE OF WISCONSIN )  
WINNEBAGO COUNTY ) SS

Sheet 2 of 2

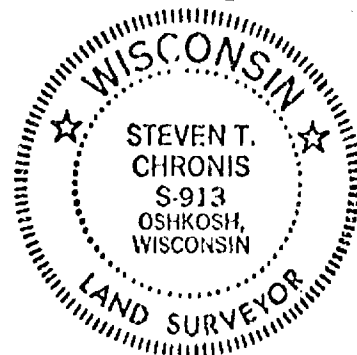
Surveyor's Certificate Continued

Block 107, thence N. 00°-05'-08" E. 88.74 feet along the West Line of said Lot 10, thence East 149.94 feet, recorded as 150.00 feet, along the North Line of said Block 107 to the point of commencement.

That such is a correct representation of all exterior boundaries of the land surveyed.

That I have fully complied with the provisions of chapter 236.34 of the Wisconsin Statutes and the land subdivision ordinance of the City of Oshkosh in surveying and mapping the same.

Dated this 20<sup>th</sup> day of April, 1977.



Steven T. Chronis  
Wisconsin Registered Land Surveyor S-913  
Steven T. Chronis

OWNER'S CERTIFICATE

As owner, I hereby certify that I caused the land described on this Certified Survey Map to be surveyed, divided, and mapped as represented on this Certified Survey Map.

I also certify that this Certified Survey Map is required to be submitted to the City of Oshkosh Planning Commission for approval or objection.

WITNESS the hand and seal of said owner this 17 day of May, 1977.

In the presence of:

Ludwig J. Repenshek  
Vernette Corbissier

Robert E. Meyer  
Robert E. Meyer

STATE OF WISCONSIN )  
WINNEBAGO COUNTY ) SS

Personally came before me this 17 day of MAY, 1977, the above named Robert E. Meyer to me known to be the person who executed for foregoing instrument and acknowledged the same.

Notary Seal Vernette Corbissier

Notary Public, WINNEBAGO, Wisconsin  
My commission expires 12-28-79

CITY PLANNING COMMISSION CERTIFICATE

This Certified Survey Map of Lots 10, 11, and 12, Block 107, Plat of Original Third Ward per Leach's Map of 1894, now in the 13th Ward, City of Oshkosh, Robert E. Meyer, owner is hereby approved.

David Wendtland  
David Wendtland  
Secretary of Planning Commission

SURVEY NO. 233-S

SHEET 1 of 3

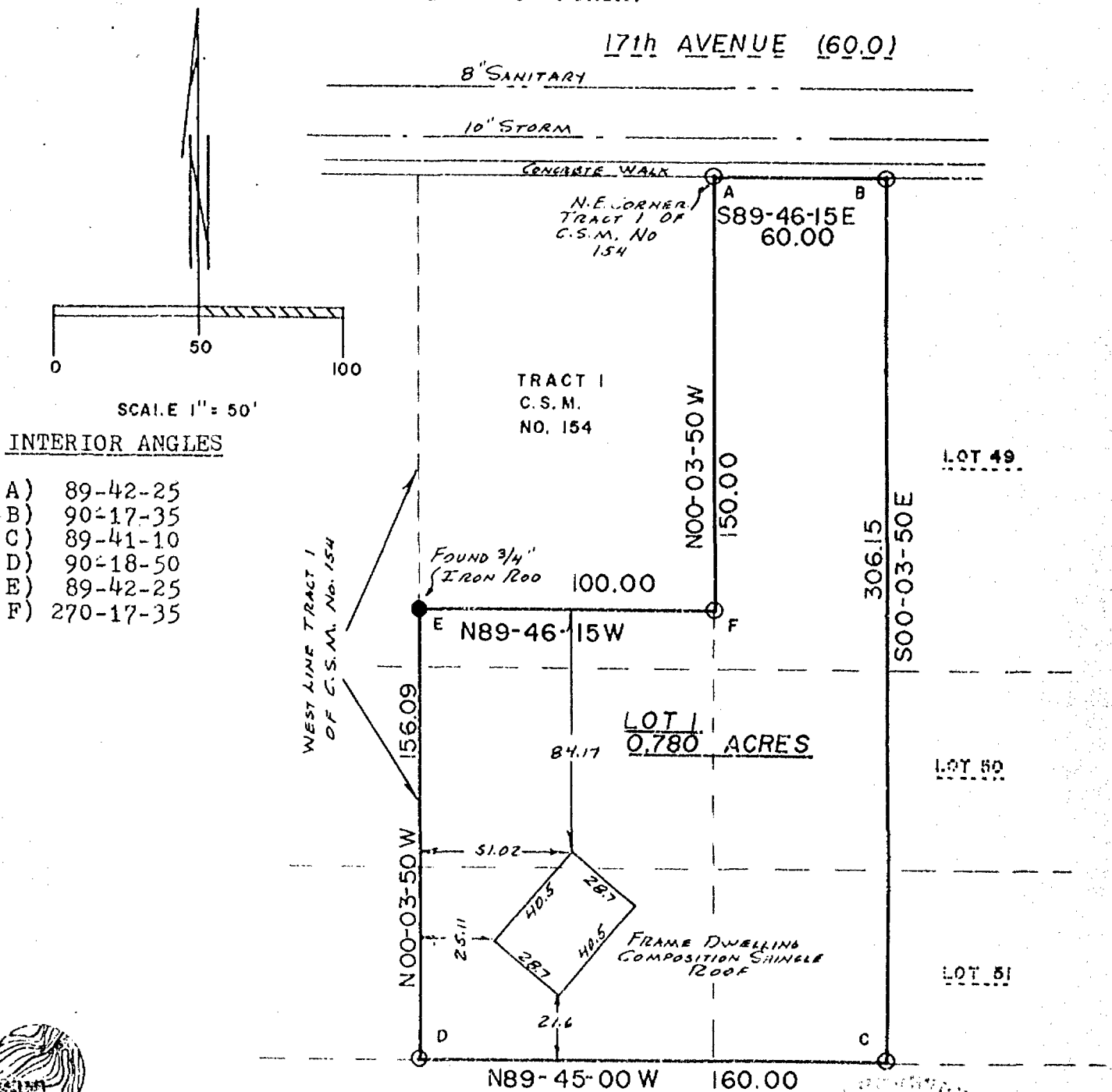
CERTIFIED SURVEY MAP NO. 1186

BEING A PART OF LOTS 49, 50 AND 51 OF THE SUBDIVISION OF THE N.W.  $\frac{1}{4}$  OF THE S.W.  $\frac{1}{4}$  OF SECTION 26, T18N, R16E PER LEACH'S MAP OF 1894, 13th WARD, NOW 14th WARD, CITY OF OSHKOSH, WINNEBAGO COUNTY, WISCONSIN.

○—○ DENOTES 1 INCH DIAMETER IRON PIPE, 24" LONG, WEIGHING NOT LESS THAN 1.13 LBS PER LINEAL FOOT.

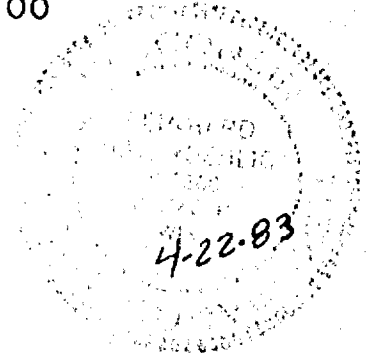
ALL DIMENSIONS ARE MEASURED TO THE NEAREST HUNDREDTH OF A FOOT.

BEARINGS ARE REFERENCED TO THE WEST LINE OF THE S.W.  $\frac{1}{4}$  OF SECTION 23, WHICH HAS AN ASSUMED BEARING OF DUE NORTH.



National Survey & Engineering

417 NORTH SAWYER STREET/P.O. BOX 2963  
 OSHKOSH, WISCONSIN 54903  
 4141 426-2800



CERTIFIED SURVEY MAP NO. 1186

BEING A PART OF LOTS 49, 50 AND 51 OF THE SUBDIVISION OF THE N.W.  $\frac{1}{4}$   
OF THE S.W.  $\frac{1}{4}$  OF SECTION 23, T18N, R16E, PER LEACH'S MAP OF 1894,  
13th WARD, NOW 14th WARD, CITY OF OSHKOSH, WINNEBAGO COUNTY, WISCONSIN.

SURVEYOR'S CERTIFICATE  
STATE OF WISCONSIN)

SS  
WINNEBAGO COUNTY)

I REINHARD ROEHLIG, Wisconsin land surveyor do hereby certify:


THAT I have surveyed and mapped a division of lots 49, 50 and 51 of the subdivision of the N.W.  $\frac{1}{4}$  of the S.W.  $\frac{1}{4}$  of section 26, T18N, R16E per Leach's Map of 1894, 13th Ward, now 14th Ward, City of Oshkosh, Winnebago County, Wisconsin which is described as commencing at the N.E. corner of Tract 1 of Winnebago County Certified Survey Map No. 154 as recorded in Volume 1 of Certified Survey Maps as Document No. 487660 thence South 89-46-15 East along the south right of way line of West 17th Avenue 60.00 ft. to a point, thence South 00-03-50 East and parallel with said Tract 1 306.15 ft. to a point, thence North 89-45-00 West and parallel with the south line of said Tract 1 aforesaid 160.00 ft. to the S.W. corner of said Tract 1, thence North 00-03-50 West along the west line of said Tract 1 156.09 ft. to a point, thence South 89-46-15 West 100.00 ft. to a point on the East line of said Tract 1, thence North 00-03-50 West along the East line of said Tract 1 aforesaid 150.00 ft. to the point of beginning.

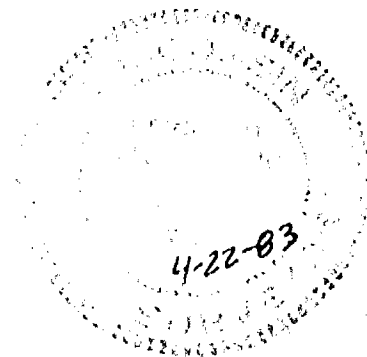
THAT I have made this survey and land division and map by the direction of LU VERN KIENAST, City of Oshkosh, Wisconsin, owner of said land.

THAT such map is a correct representation of all the exterior boundaries of the land surveyed and the land division thereof made.

THAT I have fully complied with the provisions of Chapter 236 of the Wisconsin Statutes and the Land Subdivision Ordinance of the City of Oshkosh.

Date 4-22-83

  
Reinhard Roehlig, Registered  
Land Surveyor S-1368



CERTIFIED SURVEY MAP NO. 1186

BEING A PART OF LOTS 49, 50 AND 51 OF THE SUBDIVISION OF THE N.W.  $\frac{1}{4}$  OF THE S.W.  $\frac{1}{4}$  OF SECTION 23, T18N, R16E, PER LEACH'S MAP OF 1894, 13th WARD, NOW 14th WARD, CITY OF OSHKOSH, WINNEBAGO COUNTY, WISCONSIN.

OWNER'S CERTIFICATE

AS OWNER, I hereby certify that I caused the land described on this map to be surveyed and mapped as represented on this map in accordance with the City of Oshkosh Subdivision Ordinance.

WITNESS the hand and seal of said owner this 2nd day of June 1983.

Witness

Lu Vern Kienast  
Lu Vern Kienast

STATE OF WISCONSIN)  
SS  
WINNEBAGO COUNTY)

PERSONALLY came before me this 2nd day of June 1983, the above named Lu Vern Kienast, to me known to be the person who executed the foregoing instrument and acknowledged the same.

Anna C. Kienast  
Notary Public, Winnebago County,  
Wisconsin

My Commission Expires 3/21/85.

CITY OF OSHKOSH PLANNING COMMITTEE CERTIFICATE

THIS CERTIFIED SURVEY MAP of a part of lots 49, 50 and 51 of the Subdivision of the N.W.  $\frac{1}{4}$  of the S.W.  $\frac{1}{4}$  of Section 23, T18N, R16E, per Leach's Map of 1894, 13th Ward, now 14th Ward, City of Oshkosh, Lu Vern Kienast, owner, is hereby approved.

DATE 10/24/83

Paul E. Sh  
Sec., Planning Committee Chairman  
issim

THIS INSTRUMENT WAS DRAFTED BY REINHARD ROEHLIG.

601194

Register's Office  
Winnebago County, Wis.  
Received for record this 14th  
day of Nov. A.D. 1983  
at 11:30 o'clock A.M. and  
recorded in Vol. 1 of S.M.  
on page 1186.

Gregoria Nakmal  
Register of Deeds

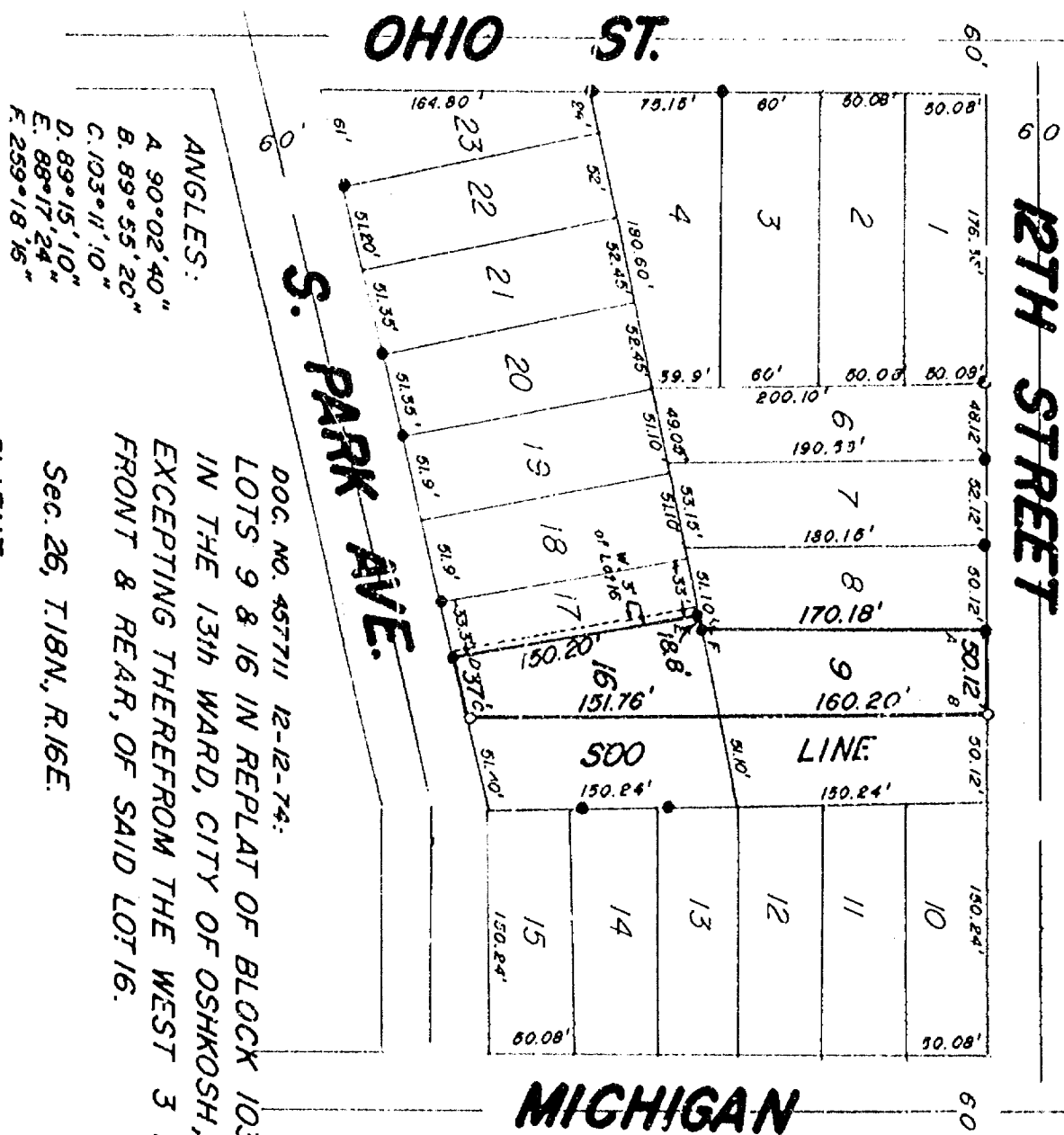


Swanson

Chgo  
80



# Plat of Survey



## LEGEND

- = Existing monuments
- = 2" x 30" iron pipe set
- = 1" x 30" iron pipe set
- ⊙ = reference caps or RR spikes
- ⊙ = Bernsten or Harrison monuments
- X-X = fence
- ( ) = recorded as
- = stone monument



## SURVEYORS CERTIFICATE

I, hereby certify that I have surveyed the property as shown, according to official records and that the plat above drawn is an accurate and correct representation of said survey. APRIL 29, 1983

*Calvin W. Hawksworth*  
Wisconsin Registered Land Surveyor S-1290

**SAYLER SURVEY**  
LAND SURVEYORS  
WINNECONNE, WI 54986

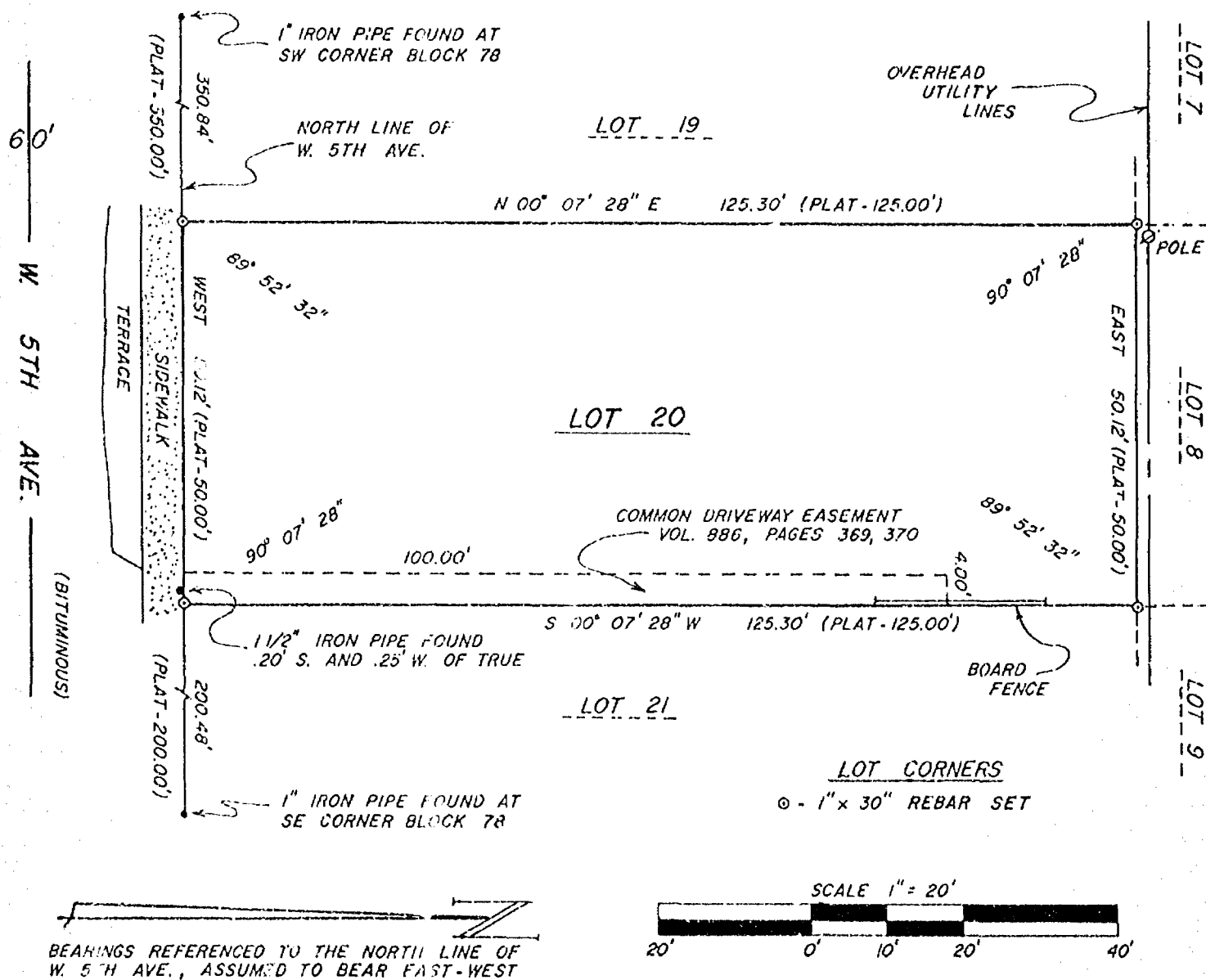
SCALE 1" = 100'  
PROJECT NO. S-001346  
FIELD BOOK 47 PAGE 43

Winnebago Land Surveying  
511 Baldwin Avenue, Oshkosh, Wisconsin 54901  
Phone (414) 426-4951

T10N R16E S26

## MAP OF SURVEY

LOT 20, BLOCK 78 IN THE ORIGINAL THIRD WARD, NOW THE  
9TH WARD, CITY OF OSHKOSH, WINNEBAGO COUNTY, WISCONSIN



### SURVEYOR'S CERTIFICATE

I, ALAN K. SHUTE, WISCONSIN REGISTERED LAND SURVEYOR, HAVE SURVEYED THE SITE SHOWN ON THIS MAP. THIS SURVEY AND MAP REFLECT THE SITE DESCRIBED IN WARRANTY DEED #584593 AND VOL. 886, PAGES 369, 370 AND SHOWS THE SIZE AND LOCATION OF THE PROPERTY, ITS EXTERIOR BOUNDARIES, THE LOCATION AND DIMENSIONS OF ALL STRUCTURES THEREON, FENCES, APPARENT EASEMENTS, ROADWAYS AND VISIBLE ENCROACHMENTS IF ANY. THIS SURVEY IS MADE FOR THE EXCLUSIVE USE OF:

GREGORY KARGUS  
200 W. 9th AVE.  
OSHKOSH, WISCONSIN 54901

AND THOSE WHO PURCHASE, MORTGAGE OR GUARANTEE THE TITLE THERETO WITHIN ONE (1) YEAR FROM THE DATE HEREOF, TO THEM I CERTIFY THAT THIS SURVEY AND MAP WERE MADE IN ACCORDANCE WITH ACCEPTABLE PROFESSIONAL STANDARDS AND IN MY PROFESSIONAL OPINION THE ACCOMPANYING MAP IS A TRUE AND ACCURATE REPRESENTATION OF THIS SITE TO THE BEST OF MY KNOWLEDGE, INFORMATION AND BELIEF.

*Alan K. Shute*

1-27-83

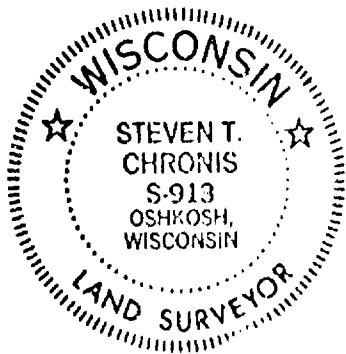


*Zoning*

A part of Lot 6 in the Subdivision of the SW $\frac{1}{4}$  of the NW $\frac{1}{4}$  of Section 26, T.18N., R.16E., 13th Ward, City of Oshkosh per Leach's Map of 1894, Winnebago County, Wisconsin.

*Steven T. Chronis*  
WISCONSIN REGISTERED LAND SURVEYOR, S-913  
STEVEN T. CHRONIS

DATED THIS 21st DAY OF December, 1981



ALL BEARINGS REFERENCED TO THE WEST LINE OF THE SW  $\frac{1}{4}$  OF SECTION 26, T.18N., R.16E., ASSUMED TO BEAR NORTH.

LEGEND

○ = 1" x 24" IRON PIPE WEIGHING 1.68 LBS. PER LINEAL FOOT SET

X = CHISELED CROSS SET

● = 1" IRON PIPE FOUND

ALL ELEVATIONS REFERENCED TO CITY OF OSHKOSH DATUM.

B.M. = TOP STEM OF HYDRANT AT THE NE CORNER OF GEORGIA AND FLORIDA STREETS.  
ELEVATION = 764.97

— — — — — = GAS MAIN  
— — — — — = WATER MAIN  
— — — — — = STORM SEWER  
— — — — — = SANITARY SEWER

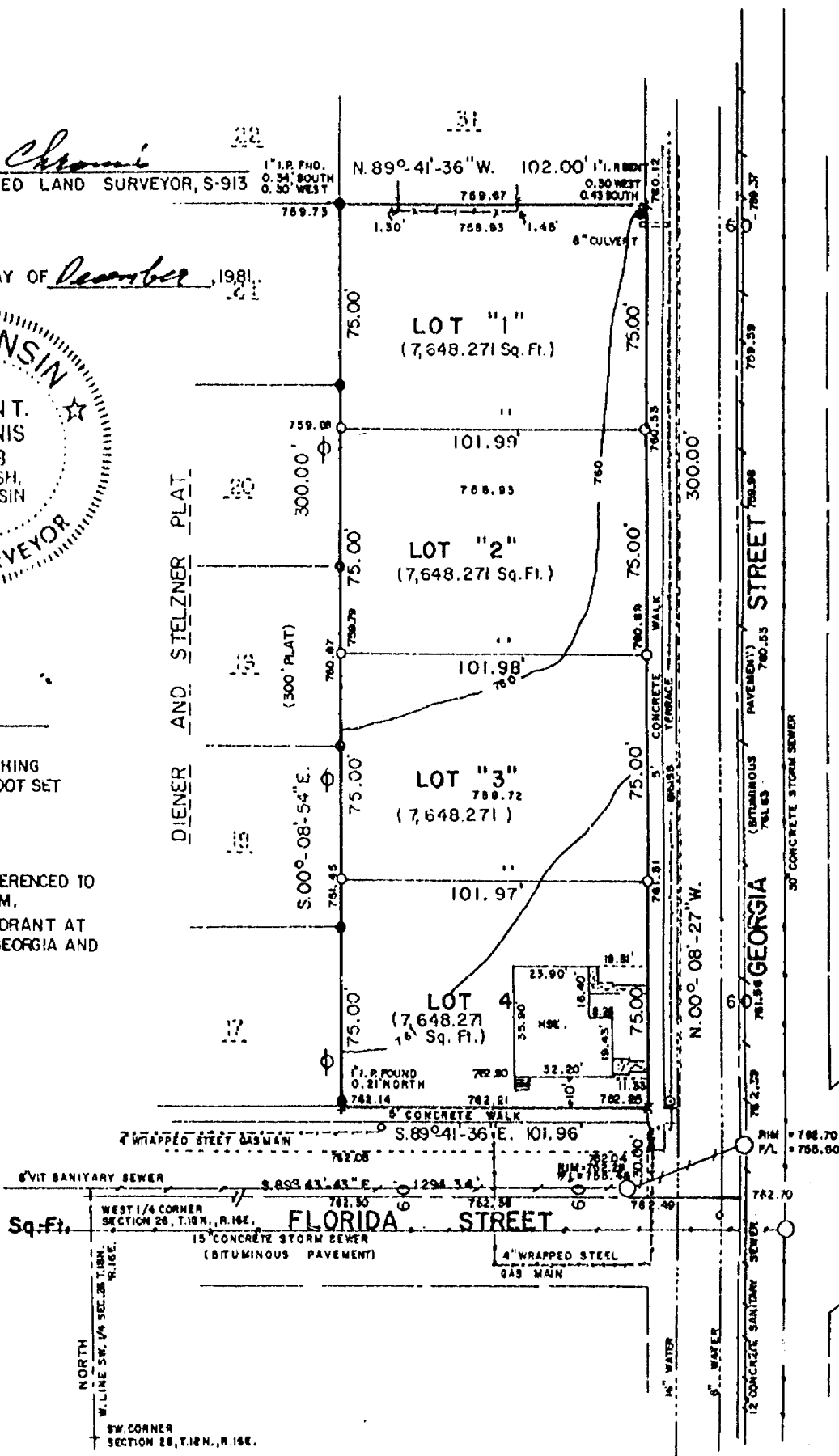
⊗ = POWERPOLE

○ = WATER HYDRANT

DATE: DEC. 17, 1981

NB. 63, PG. 59-68

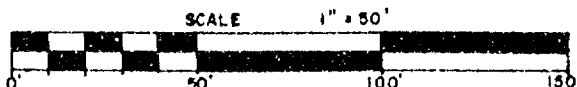
TOTAL AREA = 30,593.085 Sq. Ft.



AERO-METRIC ENGINEERING INC.

1091 SOUTH WASHBURN STREET

OSHKOSH, WISCONSIN 54056



L - 1078

STATE OF WISCONSIN )  
WINNEBAGO COUNTY ) SS

Sheet 2 of 3

SURVEYOR'S CERTIFICATE:

I, Steven T. Chronis, Wisconsin Registered Land Surveyor of Aero-Metric Engineering, Inc. certify that I have surveyed, divided and mapped under the direction of Roland T. Schroeder, a part of Lot Six (6) in the Subdivision of the Southwest Quarter (SW $\frac{1}{4}$ ) of the Northwest Quarter (NW $\frac{1}{4}$ ) of Section Twenty-Six (26), Township Eighteen (18) North, Range Sixteen (16) East, Thirteenth (13th) Ward, City of Oshkosh per Leach's Map of 1894, Winnebago County, Wisconsin, containing 30,593.085 square feet of land and being described by: Commencing at the West Quarter corner of said Section 26, thence S. 89°-43'-43" E. 1294.34 feet to a point on the extended West line of Georgia Street, thence N. 00°-08'-27" W. 30.00 feet along the extended West line of Georgia Street to a point on the North line of Florida Street and the true point of beginning, thence continuing N. 00°-08'-27" W. 300.00 feet along the West line of Georgia Street, thence N. 89°-41'-36" W. 102.00 feet, thence S. 00°-08'-54" E. 300.00 feet to a point on the North line of Florida Street, thence S. 89°-41'-36" E. 101.96 feet along the North line of Florida Street to the true point of beginning.

That such is a correct representation of all exterior boundaries of the land surveyed.

That I have fully complied with the provisions of Chapter 236.34 of the Wisconsin Statutes and the Land Subdivision Ordinance of the City of Oshkosh in surveying and mapping the same.

Dated this 21st day of December, 1981

Steven T. Chronis  
Wisconsin Registered Land Surveyor S-913  
Steven T. Chronis



OWNER'S CERTIFICATE:

As owner, I hereby certify that I caused the land described on this Certified Survey Map to be surveyed, divided and mapped as represented on this map.

Dated this 8th day of February, 1981

In the Presence of:

Gerald R. Schroeder  
Gerald R. Schroeder  
Attorney In Fact for Roland T. Schroeder

STATE OF WISCONSIN )  
WINNEBAGO COUNTY ) SS

Personally came before me this 8th day of February, 1981, the above named Roland T. Schroeder to me known to be the person who executed the foregoing instrument and acknowledged the same.

Douglas W. Buehner  
Notary Public, Winnebago County, Wisconsin  
My Commission expires July 6, 1984



CITY PLANNING COMMISSION CERTIFICATE:

This Certified Survey Map of a part of Lot 6 in the Subdivision of the SW $\frac{1}{4}$  of the NW $\frac{1}{4}$  of Section 26, T.18N., R.16E., 13th Ward, City of Oshkosh per Leach's Map of 1894, Roland T. Schroeder, owner, is hereby approved.

Feb 3, 1982  
Date

Paul Ehrfurth  
Paul Ehrfurth  
Secretary of Planning Commission

STATE OF WISCONSIN )  
WINNEBAGO COUNTY ) SS

Sheet 3 of 3

COMMON COUNCIL RESOLUTION:

Resolved, that this Certified Survey Map of a part of Lot 6 in the Subdivision of the SW $\frac{1}{4}$  of the NW $\frac{1}{4}$  of Section 26, T.18N., R.16E., 13th Ward, City of Oshkosh per Leach's Map of 1894, Roland T. Schroeder, owner, is hereby approved by the Common Council.

Date 2/3/82

Approved William D. Frueh  
City Manager: William D. Frueh

Date 2/3/82

Signed William D. Frueh  
City Manager: William D. Frueh

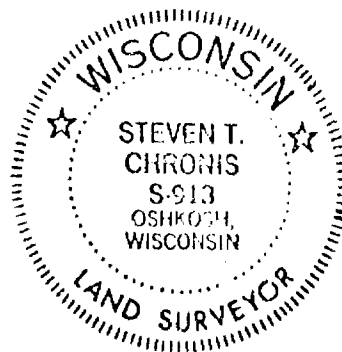
I hereby certify that the foregoing is a copy of the resolution adopted by the Common Council of the City of Oshkosh. February 3, 1982

Date February 3, 1982

Converse Marks  
City Clerk: Converse Marks

Dated this 21st day of December, 1981

Steven T. Chronis  
Wisconsin Registered Land Surveyor S-913  
Steven T. Chronis



572784

Register's Office  
Winnebago County, Wis.  
Received for record this 11th  
day of Feb A.D. 1982  
at 8:20 o'clock A.M. and  
recorded in Vol. 1 of S.M.  
on page 988  
Wynne J. Johnson  
Register of Deeds

Schmitt abstract Aug 202

STATE OF WISCONSIN ) SS  
WINNEBAGO COUNTY )

Sheet 1 of 2

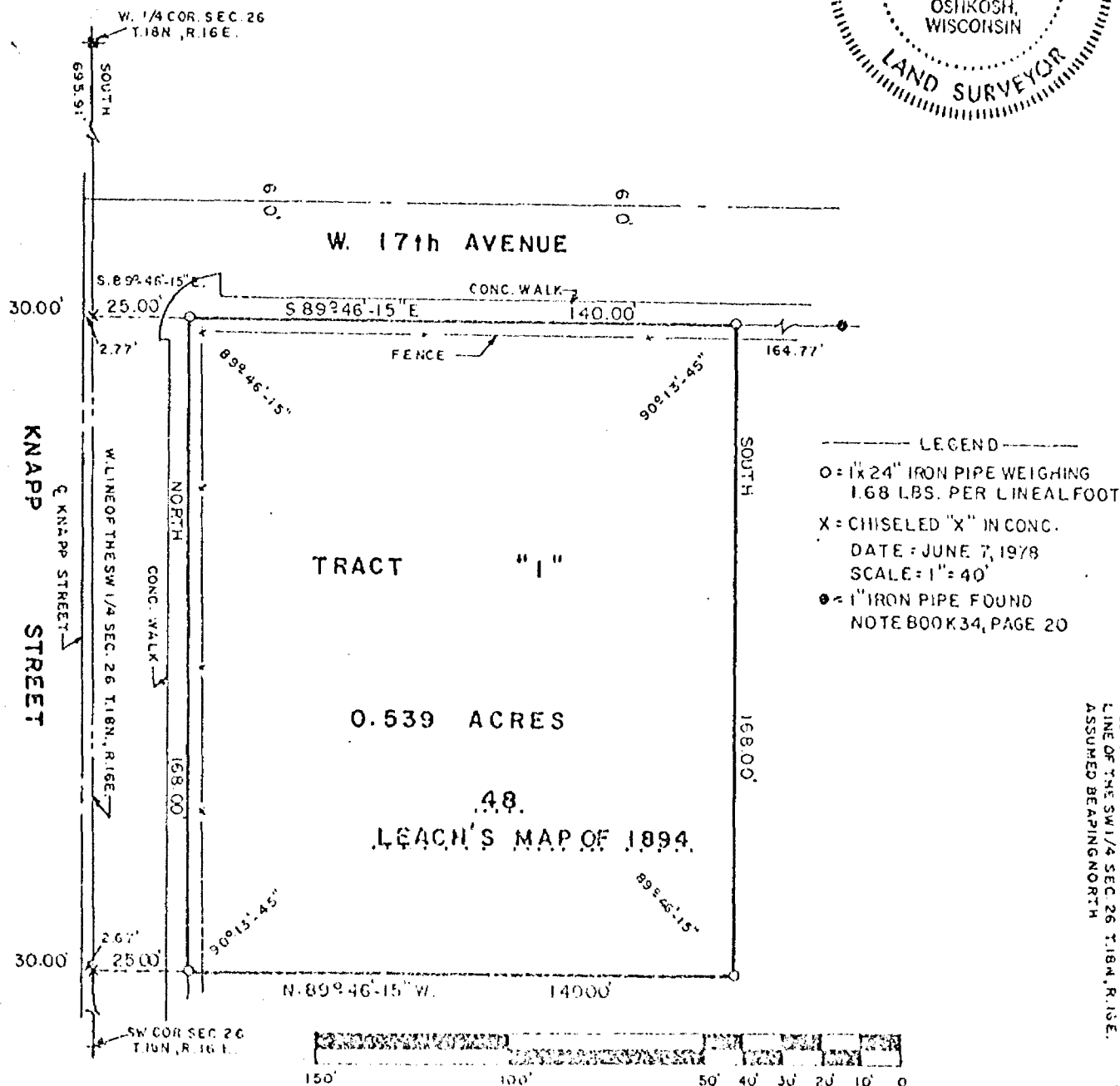
CERTIFIED SURVEY MAP  
for  
Albert Schoenberger

SURVEYOR'S CERTIFICATE:

I, Steven T. Chronis, Wisconsin Registered Land Surveyor of Aero-Metric Engineering, Inc., certify that I have surveyed, divided and mapped a part of Lot 48 of the subdivision of the Northwest Quarter (NW $\frac{1}{4}$ ) of the Southwest Quarter (SW $\frac{1}{4}$ ) of Section Twenty-six (26) Township Eighteen (18) North, Range Sixteen (16) East per Leach's Map of 1894, Thirteenth (13th) Ward now Fourteenth (14th) Ward, City of Oshkosh, Winnebago County, Wisconsin containing 0.539 Acres of land and being described by: Commencing at the West Quarter (W $\frac{1}{4}$ ) Corner of said Section 26, thence South 695.91 feet along the West line of the SW $\frac{1}{4}$  of said Section 26, to its intersection with the extended South line of West 17th Avenue, thence S. 89°-46'-15" E. 25.00 feet along the South line of West 17th Avenue extended to the Northwest Corner of Lot 48 per Leach's Map of 1894, the true continued on Sheet 2

Dated this 7th day of June, 1978

*Steven T. Chronis*  
Wisconsin Registered Land Surveyor S-913  
Steven T. Chronis



AERO-METRIC ENGINEERING INC.

1001 SOUTH WASHINGTON ST.  
OSHKOSH, WISCONSIN 54901

THIS INSTRUMENT DRAFTED BY STEVEN T. CHRONIS S-913

L-967



STATE OF WISCONSIN )  
WINNEBAGO COUNTY ) SS

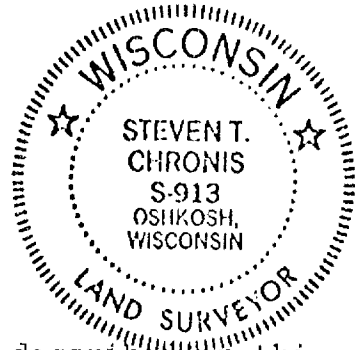
point of beginning, thence continuing S. 89°-46'-15" E. 140.00 feet along the South line of West 17th Avenue, thence South 168.00 feet, thence N. 89°-46'-15" W. 140.00 feet to a point on the East line of Knapp Street, thence North 168.00 feet along the East line of Knapp Street to the true point of beginning.

That such is a correct representation of all exterior boundaries of the land surveyed.

That I have fully complied with the provisions of Chapter 236.34 of the Wisconsin Statutes and the Land Subdivision Ordinance of the City of Oshkosh in surveying and mapping the same.

Dated this 7th day of June, 1978

Steven T. Chronis  
Wisconsin Registered Land Surveyor S-913  
Steven T. Chronis



OWNER'S CERTIFICATE:

As owners we hereby certify that we caused the land described on this Certified Survey Map to be surveyed, divided and mapped as represented on this map.

WITNESS the hand and seal of said owners this 13th day of June, 1978

In the presence of:

Horton M. Plonagan  
Denise Butler

Albert Schoenberger  
Albert Schoenberger  
Louise Schoenberger  
Louise Schoenberger

STATE OF WISCONSIN )  
WINNEBAGO COUNTY ) SS

Personally came before me this 13 day of June, 1978, the above named Albert Schoenberger and Louise Schoenberger to me known to be the persons who executed the foregoing instrument and acknowledged the same.



Notary Seal Horton M. Plonagan  
Notary Public Winnebago County, Wisconsin  
My Commission Expires is permanent

CITY PLANNING COMMISSION CERTIFICATE:

This Certified Survey Map of a part of Lot 48 of the Subdivision of the NW¼ of the SW¼ of Section 26, T.18N., R.16E., per Leach's Map of 1894, Thirteenth (13th) Ward, now Fourteenth (14th) Ward, City of Oshkosh, Albert Schoenberger and Louise Schoenberger, owners, is hereby approved.

Date 6/13/78

Roland S. Miller  
Roland Miller  
Acting Secretary of Planning Commission

W 518173

Register's Office  
Winnebago County, Wis.  
Received for record this 29th  
day of June A.D. 1978  
at 9:08 o'clock A.M. and  
recorded in Vol. 1 of S. Maps  
on page 358.

Allen M. Payne  
Register of Deeds

Flanagan Chq  
2.00

26-18-16

zoning

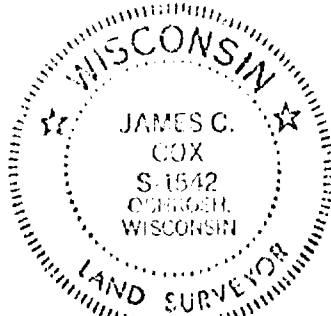
STATE OF WISCONSIN } ss WINNEBAGO COUNTY CERTIFIED SURVEY MAP NO. 854 SHEET 1 OF 2

SURVEYOR'S CERTIFICATE:

I, James C. Cox, Wisconsin Registered Land Surveyor of Aero-Metric Engineering, Inc., certify that I have surveyed, divided and mapped under the direction of Cal Culbertson of Knight Realty & Development a part of Lot 17 in John Smith's Second Addition to Oshkosh, Ninth (9th) Ward, City of Oshkosh, Winnebago County, Wisconsin containing 20,985.95 square feet of land and being described by: Commencing at the Southeast corner of said Lot 17 being the true point of beginning, running thence N. 89°-18'-36" W. 196.55 feet along the South line of said Lot 17 to a point S. 89°-18'-36" E. 104.00 feet from the Southwest corner of said Lot 17, thence N. 00°-00'-42" E. 106.80 feet along a line 104.00 feet East of and parallel to the West line of said Lot 17 to a point 92.00 feet South of the North line of said Lot 17, thence S. 89°-18'-04" E. 196.53 feet along a line 92.00 feet South of and parallel to the North line of said Lot 17 to a point on the East line of said Lot 17, thence S. 00°-00'-00" E. 106.77 feet along the East line of said Lot 17 to the true point of beginning.

That such is a correct representation of all exterior boundaries of the land surveyed.

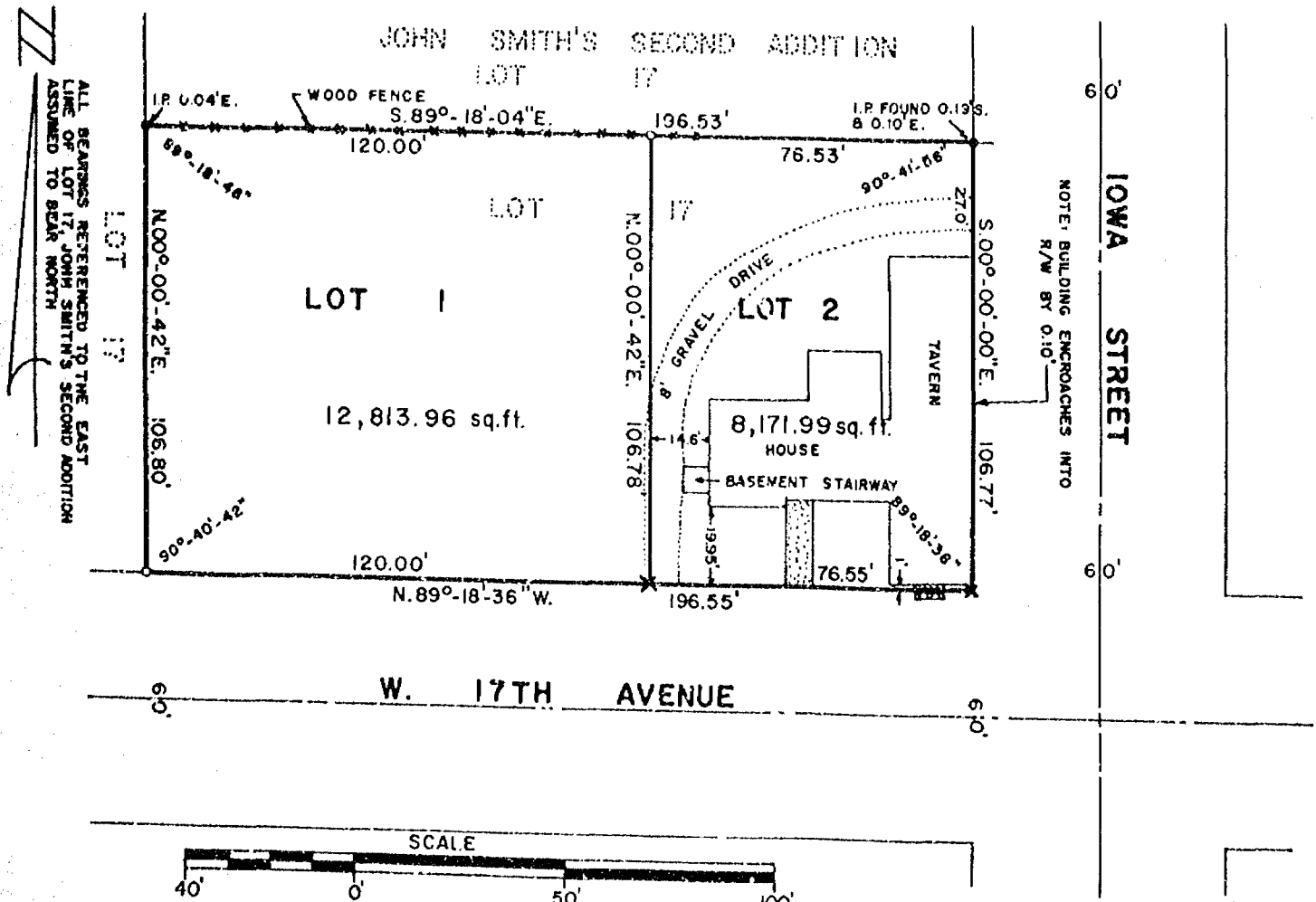
That I have fully complied with the provisions of Chapter 236.34 of the Wisconsin Statutes and the Land Subdivision Ordinance of the City of Oshkosh in surveying and mapping the same.



*James C. Cox*  
WISCONSIN REGISTERED LAND SURVEYOR S-1542  
JAMES C. COX

DATED THIS 20<sup>th</sup> DAY OF JANUARY, 1981.

— LEGEND —  
○ = 1" x 24" IRON PIPE WEIGHING 1.68 LBS./LINEAL FOOT SET  
● = 3/4" IRON PIPE FOUND  
x = CHISELED CROSS SET IN CONC.  
SCALE: 1" = 40'



AERO-METRIC ENGINEERING, INC.

1091 SOUTH WASHBURN STREET  
OSHKOSH, WISCONSIN 54901

NOTEBOOK-58 PAGE-27,28

THIS INSTRUMENT DRAFTED BY JAMES C. COX S-1542

L-986

STATE OF WISCONSIN }  
WINNEBAGO COUNTY } SS

SHEET 2 OF 2

OWNER'S CERTIFICATE:

As owner, I hereby certify that I caused the land described on this Certified Survey Map to be surveyed, divided and mapped as represented on this map.

Dated this 2d day of February, 1981

In the Presence of:

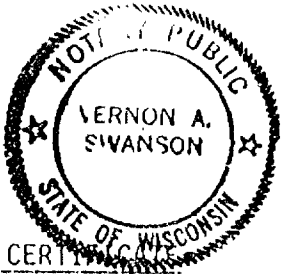
Judith A. Ambrose

Barbara Ann Fredrickson  
Barbara Ann Fredrickson

Vernon A. Swanson

STATE OF WISCONSIN }  
WINNEBAGO COUNTY } SS

Personally came before me this 2d day of February, 1981, the above named Barbara Ann Fredrickson to me known to be the person who executed the foregoing instrument and acknowledged the same.



Vernon A. Swanson

Notary Public Winnebago County, Wisconsin  
My Commission ~~expires~~ is permanent

CITY PLANNING COMMISSION CERTIFICATE

This Certified Survey Map of a part of Lot 17 in John Smith's Second Addition to Oshkosh, Barbara Ann Fredrickson, owner, is hereby approved.

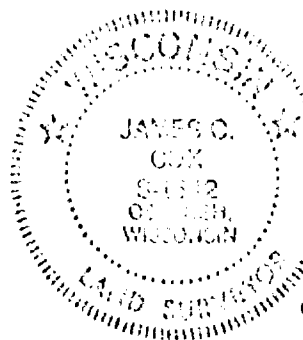
1/26/81  
Date

By: Paul Ehrfurth  
Paul Ehrfurth  
Secretary of Planning Commission

James C. Cox  
WISCONSIN REGISTERED LAND SURVEYOR S-1542  
JAMES C. COX

DATED THIS 20th DAY OF JANUARY, 1981.

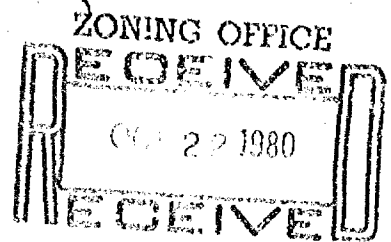
560134



Register's Office  
Winnebago County, Wis.  
Received for record this 2nd  
day of Feb. A.D. 1981  
at 4:00 o'clock P.M. and  
recorded in Vol. 1 of Ordinances  
in page 854  
James C. Cox  
Register of Deeds

Cal. Culbertson 1-986

Zoning



148-S

SHEET 1 of 2

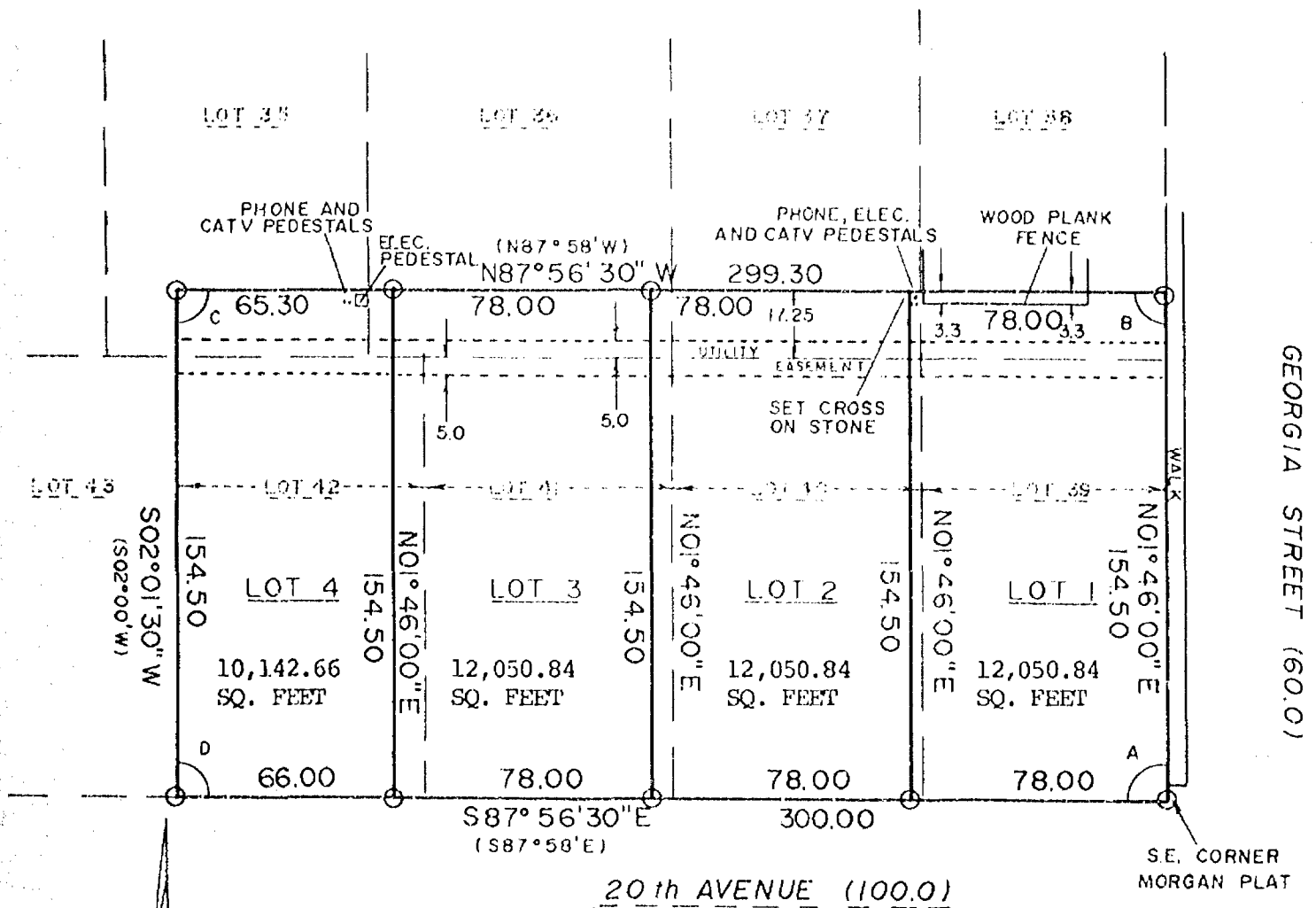
CERTIFIED SURVEY MAP NO. 818

BEING A RE-DIVISION OF LOTS 35, 36, 37, 38, 39, 40, 41 AND 42 IN THE MORGAN PLAT, BEING A SUBDIVISION OF THE S.W. 1/4 OF THE S.W. 1/4 OF SECTION 26, T18N, R16E, CITY OF OSHKOSH, WINNEBAGO COUNTY, WISCONSIN.

○ ——— DENOTES 1 INCH DIAMETER IRON PIPE 24" LONG, WITH A WEIGHT OF 1.13 LBS. PER LINEAL FOOT.

ALL DIMENSIONS ARE MEASURED TO THE NEAREST HUNDREDTH OF A FOOT.

NORTH IS REFERENCED TO THE WEST LINE OF GEORGIA STREET WHICH HAS AN ASSUMED BEARING OF NORTH 01°46'00" EAST.



( ) = Recorded As

INTERIOR ANGLES

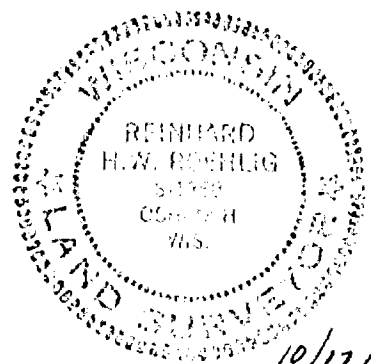
- A) 89°42'30"
- B) 90°17'30"
- C) 89°58'00"
- D) 90°02'00"

SCALE 1" = 50'



**national survey & engineering**

417 NORTH SAWYER STREET  
P.O. BOX 2963  
OSHKOSH, WISCONSIN 54903  
(414) 426-2800



CERTIFIED SURVEY MAP NO. 818

BEING A RE-DIVISION OF LOTS 35, 36, 37, 38, 39, 40, 41 AND 42 IN THE MORGAN PLAT, BEING A SUBDIVISION OF THE S.W. 1/4 OF THE S.W. 1/4 OF SECTION 26, T18N, R16E, CITY OF OSHKOSH, WINNEBAGO COUNTY, WISCONSIN.

## SURVEYOR'S CERTIFICATE

(STATE OF WISCONSIN)

:SS

WINNEBAGO COUNTY)

I, REINHARD ROEHLIG, Wisconsin land surveyor do hereby certify:

THAT I have surveyed and mapped a part of the S.W. 1/4 of the S.W. 1/4 of Section 26, T18N, R16E, in the City of Oshkosh, Winnebago County, Wisconsin which is bounded and described as follows:

Commencing at the S.E. corner of the MORGAN PLAT, thence North 01°46'00" East along the West line of Georgia Street 154.50 ft. to a point, thence North 87°56'30" West 299.30 ft. to a point, thence South 02°01'30" West 154.50 ft. to a point on the North line of 20th Avenue, thence South 87°56'30" East along the North line of 20th Avenue 300.00 ft. to the point of beginning.

THAT I have made this survey and map by the direction of LU VERN KIENAST, City of Oshkosh, owner of said land.

THAT such map is a correct representation of all the exterior boundaries of the land surveyed.

THAT I have fully complied with the provisions of Chapter 236 of the Wisconsin Statutes and the Land Subdivision Ordinance of the City of Oshkosh.

10/17/80  
Date

Reinhard Roehlig (SEAL)  
Reinhard Roehlig, Registered  
Land Surveyor S-1368

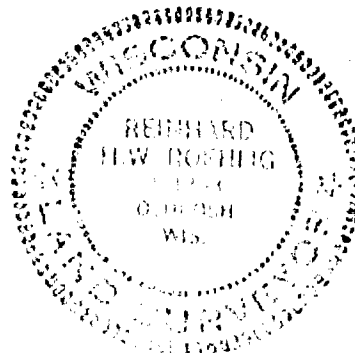
THIS INSTRUMENT WAS DRAFTED BY REINHARD ROEHLIG.

556086

Register's Office  
Winnebago County, Wis.  
Received for record this 21st  
day of Oct. A.D., 18 80  
at 2:00 o'clock P. M. and  
recorded in Vol. 1 of Survey  
on page 818 Maps

John M. Jones  
Register of Deeds

National Survey ch  
2000





STATE OF WISCONSIN )  
WINNEBAGO COUNTY ) SS

Certified Survey Map  
for  
Tom Rusch Realty Co.

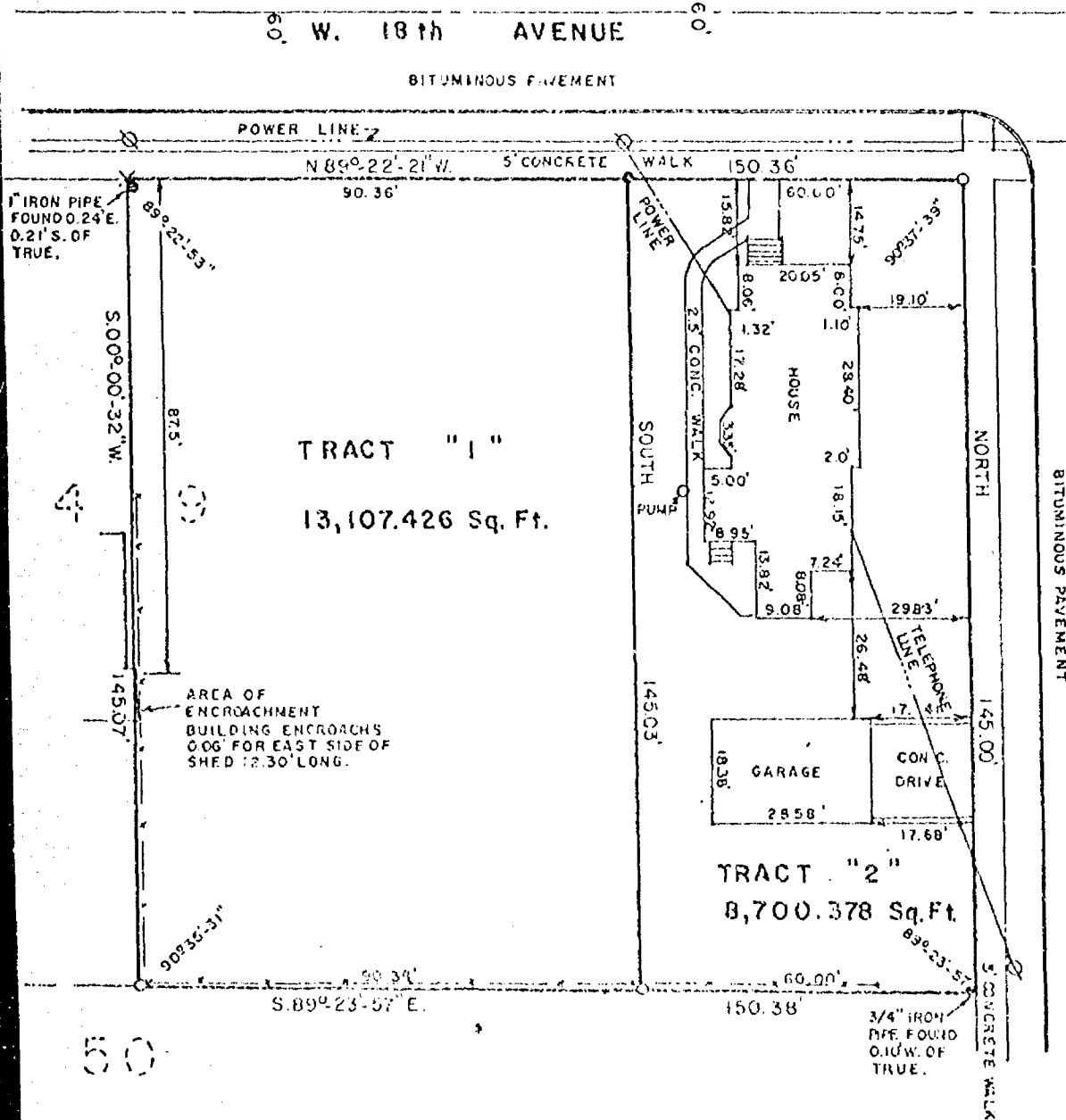
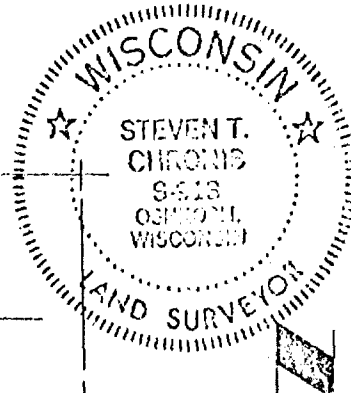
**SURVEYOR'S CERTIFICATE:**

I, Steven T. Chronis, Wisconsin Registered Land Surveyor of Aero-Metric Engineering, Inc., certify that I have surveyed, divided and mapped the East Half of Lot 49 of Lois Smith's Addition being a part of the SE $\frac{1}{4}$  of the SE $\frac{1}{4}$  of Section 26, T. 18 N., R. 16 E. 14th Ward, City of Oshkosh, Winnebago County, Wisconsin containing 21,807.80 square feet of land and being described by: Commencing at the Northeast corner of said lot 49 of Lois Smith's Addition, thence N. 89°-22'-21" W. 150.36 feet along the South line of West 18th Avenue, thence S. 00°-00'-32" W. 145.07 feet along the West line of the East half of said lot 49, thence S. 89°-23'-57" E. 150.38 feet along the South line of said lot 49, thence North 145.00 feet along the West line of Minnesota Avenue to the point of commencement.

Dated this 16th day of February, 1978

continued on Sheet 2 of 2

Steven T. Chronis  
Wisconsin Registered Land Surveyor S-913  
Steven T. Chronis



- ALL LINES REFERENCED TO THE WEST LINE OF MINNESOTA STREET ASSUMED BEARING NORTH.
- LEGEND
- = 1" x 24" IRON PIPE WEIGHING 1.68 LBS. PER LINEAL FOOT
  - = 1" IRON PIPE FOUND
  - = 3/4" IRON PIPE FOUND
  - DATE = FEB. 15, 1970
  - X = CHISELED CROSS IN WALK.
  - SCALE: 1" = 30'

AERO-METRIC  
ENGINEERING INC.

5011ER AVENUE

OSHKOSH, WISCONSIN 54901

NOTE BOOK 30, PAGE 63-65

THIS INSTRUMENT DRAWN BY STEVEN T. CHRONIS W.R.L.S. S-913

STATE OF WISCONSIN )  
WINNEBAGO COUNTY ) SS

SURVEYOR'S CERTIFICATE: (continued)

That such is a correct representation of all exterior boundaries of the land surveyed.

That I have fully complied with the provisions of Chapter 236.34 of the Wisconsin Statutes and the Land Subdivision Ordinance of the City of Oshkosh in surveying and mapping the same.

Dated this 16th day of February, 1978

Steven T. Chronis  
Wisconsin Registered Land Surveyor S-913  
Steven T. Chronis



OWNER'S CERTIFICATE:

As owner, I hereby certify that I caused the land described on this Certified Survey Map to be surveyed, divided and mapped as represented on this map.  
WITNESS the hand and seal of said owner this 12th day of March, 1978.

In the Presence of:

Heidi Schuler  
Jim Walter

Margaret C. Discher  
Margaret C. Discher

STATE OF WISCONSIN )  
WINNEBAGO COUNTY ) SS

Personally came before me this 12th day of March, 1978, the above named Margaret C. Discher to me known to be the person who executed the foregoing instrument and acknowledged the same.

Notary Seal [Signature]  
Notary Public, Oshkosh, Wisconsin  
My Commission expires 12/21/83

CITY PLANNING COMMISSION CERTIFICATE:

This Certified Survey Map of the East half of Lot 49, Lois Smith's Addition, 14th Ward, City of Oshkosh, Margaret C. Discher, owner, is hereby approved.

Feb. 27, 1978  
Date

David Wendtland  
David Wendtland  
Secretary of Planning Commission

514168

Register's Office  
Winnebago County, Wis.  
Received for record this 26th  
day of April A.D. 1978  
at 9:12 o'clock A.M. and  
recorded in Vol. 1 of S. Maps  
on page 322.

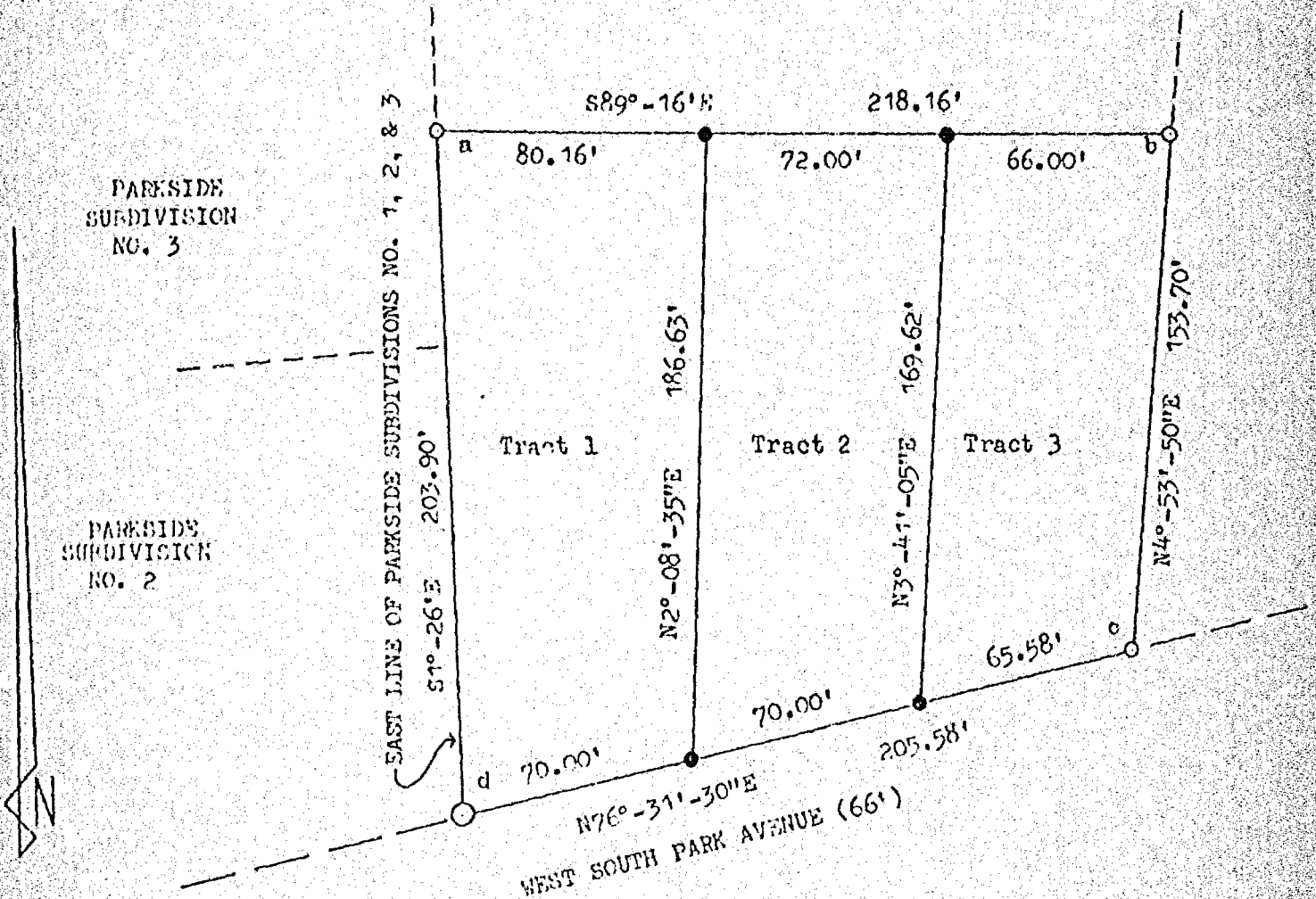
*John M. Payne*  
Register of Deeds

Manske

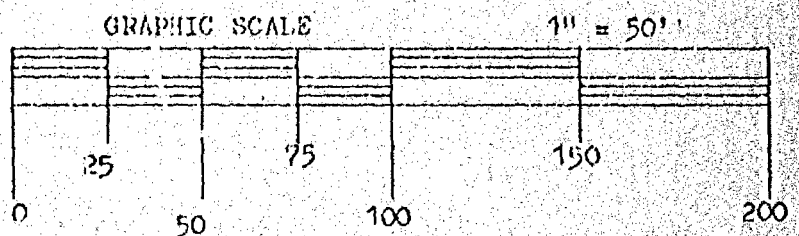
Chg  
2.00

CERTIFIED SURVEY MAP NO. 433

ALL OF TRACT 3 OF CERTIFIED SURVEY MAP NO. 410 RECORDED IN VOLUME 1 OF CERTIFIED SURVEY MAPS, IN THE CITY OF OSHKOSH, WINNEPAGO COUNTY, WISCONSIN.



NORTH IS REFERENCED TO THE EAST LINE OF PARKSIDE SUBDIVISIONS NO. 1, 2, & 3, SECTION 26, T18N, R16E, CITY OF OSHKOSH, WINNEPAGO COUNTY, WISCONSIN, WHICH BEARS 89°-16' EAST OF SOUTH AND IS ASSUMED TO BEAR 89°-26'E.

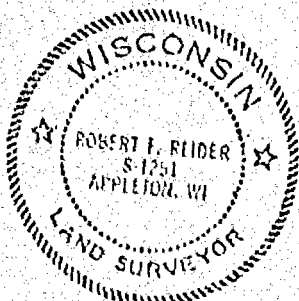


LEGEND

- = 2" ROUND IRON PIPE FOUND
- = 3/4" ROUND SOLID IRON ROD FOUND
- = 3/4" x 24" SOLID ROUND IRON ROD SET 1,602 LBS. PER LINEAR FOOT

ANGLES

- a = 82°-50'
- b = 85°-50'-10"
- c = 108°-22'-20"
- d = 77°-57'-30"



*Robert F. Reider* 8-29-78

ROBERT F. REIDER, RLS-1251, DATED  
8/28/78 rr-kv KJV  
CAROW LAND SURVEYING CO., INC.  
604 N. RICHMOND STREET  
APPLETON, WISCONSIN 54911  
A-6402-78

CERTIFIED SURVEY MAP NO. 433

SURVEYOR'S CERTIFICATE:

I, ROBERT F. REIDER, REGISTERED WISCONSIN LAND SURVEYOR, CERTIFY THAT I HAVE SURVEYED, DIVIDED, AND MAPPED TRACT 3 OF CERTIFIED SURVEY MAP NO. 410 AS RECORDED IN VOLUME 1 OF THE CERTIFIED SURVEY MAPS. BEING PART OF LOT 8 IN THE SW<sup>1</sup>/<sub>4</sub> OF THE NW<sup>1</sup>/<sub>4</sub> OF SECTION 26, T18N, R16E, AS PER LEACH'S MAP OF 1894 IN THE CITY OF OSHKOSH, WINNEBAGO COUNTY, WISCONSIN. SAID PARCEL OF LAND CONTAINS 0.87 ACRES MORE OR LESS. SUBJECT TO ALL EASEMENTS AND RESTRICTIONS OF RECORD.

THAT I HAVE MADE SUCH SURVEY AND LAND DIVISION UNDER THE DIRECTION OF DAN SCHOTT, CHIEF OF WISCONSIN 54901

THAT THIS MAP IS A CORRECT REPRESENTATION OF THE EXTERIOR BOUNDARY LINE OF THE LAND SURVEYED

THAT I HAVE FULLY COMPLIED WITH THE PROVISIONS OF CHAPTER 236.34 OF THE WISCONSIN STATUTES AND THE SUBDIVISION REGULATIONS OF WINNEBAGO COUNTY.

OWNER'S CERTIFICATE:

AS OWNER, I HEREBY CERTIFY THAT I CAUSED THE LAND DESCRIBED ON THIS CERTIFIED SURVEY MAP TO BE SURVEYED, DIVIDED, AND MAPPED AS REPRESENTED. I ALSO CERTIFY THAT THIS MAP IS REQUIRED BY S. 236.10 OR S. 236.12 OF THE WISCONSIN STATUTES TO BE SUBMITTED TO THE FOLLOWING FOR APPROVAL:

CITY OF OSHKOSH PLANNING COMMISSION

WITNESS THE HAND AND SEAL OF SAID OWNER THIS 30 DAY OF August, 1978 IN THE PRESENCE OF

Daniel H. Schott  
OWNER

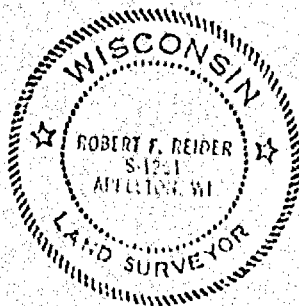
William D. Frank  
WITNESS

IN ACCORDANCE TO THE CITY OF OSHKOSH SUBDIVISION ORDINANCE, ALL REQUIREMENTS FOR APPROVAL HAVE BEEN FULFILLED. THIS CERTIFIED SURVEY MAP WAS APPROVED AND ACCEPTED ON THE 11th DAY OF September, 1978

William D. Frank  
CHAIRMAN, CITY OF OSHKOSH PLANNING COMMISSION

Robert F. Reider 8-28-78

ROBERT F. REIDER, RLS-1251, DATED 8/28/78  
rr-kv KJV  
CARON LAND SURVEYING CO., INC.  
604 N. RICHMOND STREET  
APPLETON, WISCONSIN 54911  
A-6400-78



N 523249

Register's Office  
Winnebago County, Wis.  
Received for record 27<sup>th</sup>  
day of September A.D., 1978  
at 1:32 o'clock P. M. and  
recorded in Vol. 1 of S. Maps  
on page 433.

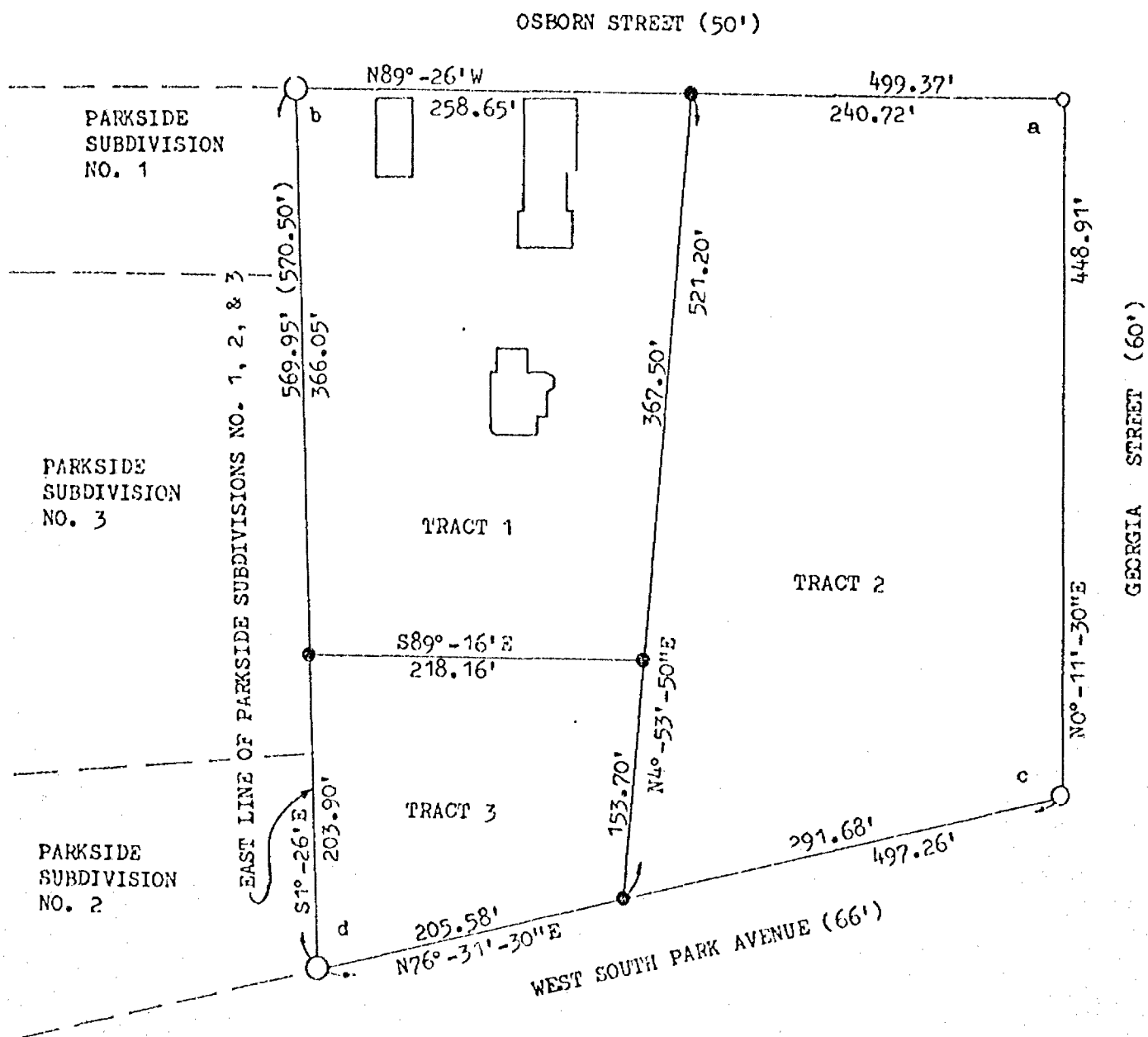
*Allen M. Payne*  
REGISTER OF DEEDS



County Survey  
NOT RECORDED IN  
CITY.

CERTIFIED SURVEY MAP NO. 410

BEING PART OF LOT 8 IN THE SW 1/4 OF THE NW 1/4 OF SECTION 26, T18N, R16E, AS PER LEACH'S MAP OF 1894 IN THE CITY OF OSHKOSH, WINNEBAGO COUNTY, WISCONSIN.



NORTH IS REFERENCED TO THE EAST LINE OF PARKSIDE SUBDIVISIONS NO. 1, 2, & 3, SECTION 26, T18N, R16E, CITY OF OSHKOSH, WINNEBAGO COUNTY, WISCONSIN WHICH BEARS 1°-26' EAST OF SOUTH AND IS ASSUMED TO BEAR S1°-26'E.

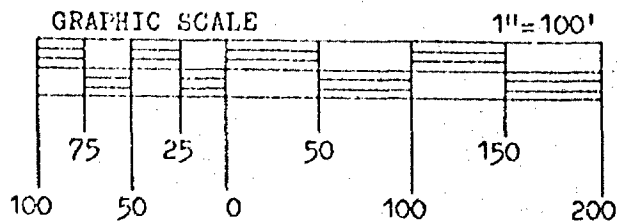
LEGEND

- ( ) = RECORDED AS
- = 2" ROUND IRON PIPE FOUND
  - = 1 1/2" ROUND IRON PIPE FOUND
  - = 1" ROUND IRON PIPE FOUND
  - = 3/4" x 24" SOLID ROUND IRON ROD SET, 1.502 LPS. PER LINEAR FT.

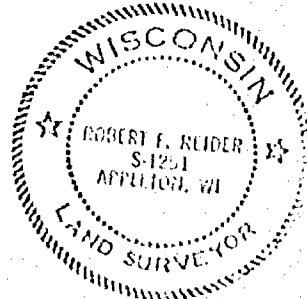
ANGLES

- a = 90°-22'-30"      c = 103°-40'
- b = 88°-00"          d = 77°-52'-30"

GRAPHIC SCALE



Robert F. Reider 7-7-78  
 ROBERT F. REIDER, RLS-1251 DATED  
 7/7/78 rr-kv BAD  
 CAROW LAND SURVEYING CO., INC.  
 604 N. RICHMOND ST.  
 APPLETON, WI. 54911  
 A-6158-78





CERTIFIED SURVEY MAP NO. 410

SURVEYOR'S CERTIFICATE:

I, ROBERT F. REIDER, REGISTERED WISCONSIN LAND SURVEYOR, CERTIFY THAT I HAVE SURVEYED, DIVIDED, AND MAPPED PART OF LOT 8 IN THE SW 1/4 OF THE NW 1/4 OF SECTION 26, T18N, R16E, AS PER LEACH'S MAP OF 1894 IN THE CITY OF OSHKOSH, WINNEBAGO COUNTY, WISCONSIN, BOUNDED AND DESCRIBED AS FOLLOWS: BEGINNING AT THE NE CORNER OF PARKSIDE SUBDIVISION NO. 1; THENCE S1°-26'E, 569.95 FEET (570.50 FEET) ALONG THE EAST LINE OF PARKSIDE SUBDIVISIONS NO. 1, 2, & 3 TO THE NORTH LINE OF WEST SOUTH PARK AVENUE; THENCE N76°-31'-30"E, 497.26 FEET ALONG SAID NORTH LINE TO THE WEST LINE OF GEORGIA STREET; THENCE N0°-11'-30"E, 448.91 FEET ALONG SAID WEST LINE TO THE SOUTH LINE OF OSBORN STREET; THENCE N89°-26'W, 499.37 FEET ALONG SAID SOUTH LINE TO THE POINT OF BEGINNING. SAID PARCEL OF LAND CONTAINS 5.75 ACRES MORE OR LESS. SUBJECT TO ALL EASEMENTS AND RESTRICTIONS OF RECORD.

THAT I HAVE MADE SUCH SURVEY AND LAND DIVISION UNDER THE DIRECTION OF DON RADTKE, WEYAUWEGA, WISCONSIN 54983.

THAT THIS MAP IS A CORRECT REPRESENTATION OF THE EXTERIOR BOUNDARY LINE OF THE LAND SURVEYED.

THAT I HAVE FULLY COMPLIED WITH THE PROVISIONS OF CHAPTER 236.34 OF THE WISCONSIN STATUTES AND THE SUBDIVISION REGULATIONS OF WINNEBAGO COUNTY.

OWNER'S CERTIFICATE:

AS OWNER, I HEREBY CERTIFY THAT I CAUSED THE LAND DESCRIBED ON THIS CERTIFIED SURVEY MAP TO BE SURVEYED, DIVIDED, AND MAPPED AS REPRESENTED. I ALSO CERTIFY THAT THIS MAP IS REQUIRED BY S. 236.10 OR S. 236.12 OF THE WISCONSIN STATUTES TO BE SUBMITTED TO THE FOLLOWING FOR APPROVAL: WINNEBAGO COUNTY PLANNING AND ZONING COMMITTEE

CITY OF OSHKOSH PLANNING COMMISSION

WITNESS THE HAND AND SEAL OF SAID OWNER THIS 21st DAY OF August, 1978.

IN THE PRESENCE OF

OWNER

WITNESS

PURSUANT TO THE WINNEBAGO COUNTY SUBDIVISION ORDINANCE, ALL REQUIREMENTS FOR APPROVAL HAVE BEEN FULFILLED. THIS CERTIFIED SURVEY MAP WAS APPROVED AND ACCEPTED ON THE

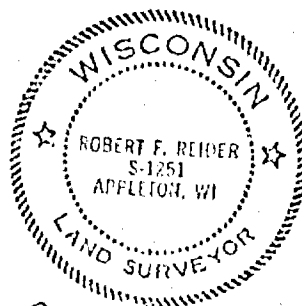
22 DAY OF August, 1978.

Robert M. Smith  
CHAIRMAN, WINNEBAGO COUNTY  
PLANNING AND ZONING COMMITTEE

PURSUANT TO THE CITY OF OSHKOSH SUBDIVISION ORDINANCE, ALL REQUIREMENTS FOR APPROVAL HAVE BEEN FULFILLED. THIS CERTIFIED SURVEY MAP WAS APPROVED AND ACCEPTED ON THE

22 DAY OF August, 1978.

Robert F. Reider  
MEMBER, CITY OF OSHKOSH  
PLANNING COMMISSION



Robert F. Reider 7-7-78  
ROBERT F. REIDER, RLS-1251, DATED  
7/7/78 rr-kv BAD  
CAROM LAND SURVEYING CO., INC.  
604 N. RICHMOND ST.  
APPLETON, WI. 54911  
A-6158-78

REGISTER OF DEEDS

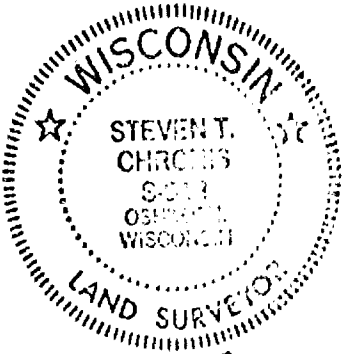
Registered & Cited  
Winnebago County, 7/23/78  
Recorded for record 8/10/78  
day of August 1978  
at 3:50 o'clock P.M. and  
recorded in Vol. 1 of Survey Maps  
on page 410

STATE OF WISCONSIN )  
WINNEBAGO COUNTY ) S3

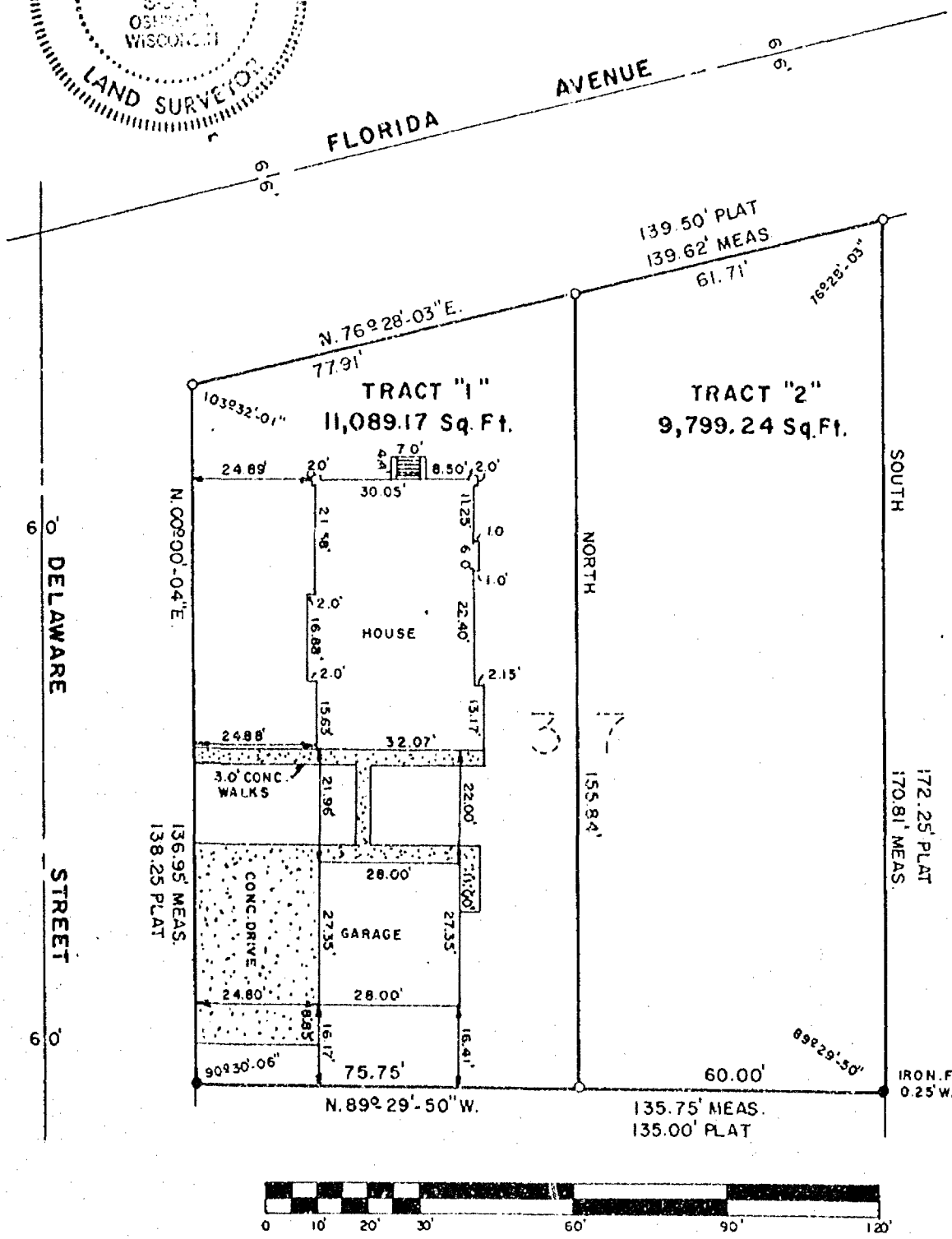
Sheet 1 of 2

Certified Survey Map  
for  
Schmidt-Leeman Realtors

Dated this 24<sup>th</sup> day of January, 1977



Steven T. Chronis  
Wisconsin Registered Land Surveyor S-913  
Steven T. Chronis



ALL BEARINGS REFERENCED TO THE EAST  
LINE OF LOT 37, BLOCK 113, IN THE PLAT  
OF OSBOBNS ADDITION ASSUMED BEARING  
SOUTH.

LEGEND  
O = 1" x 24" IRON PIPE WEIGHING  
1.68 LBS. PER LINEAL FOOT  
● = 1" IRON PIPE FOUND  
DATE: JAN. 24, 1977  
SCALE: 1" = 30'

STATE OF WISCONSIN )  
WINNEBAGO COUNTY ) SS

SURVEYOR'S CERTIFICATE:

I, Steven T. Chronis, Wisconsin Registered Land Surveyor of Aero-Metric Engineering, Inc., certify that I have surveyed, divided and mapped Lot 37, except the South 100.00 feet thereof, in Block 113, Osborn's Addition, Thirteenth (13th) Ward, City of Oshkosh, Winnebago County, Wisconsin containing 20,888.41 square feet of land.

That such is a correct representation of all exterior boundaries of the land surveyed.

That I have fully complied with the provisions of Chapter 236.34 of the Wisconsin statutes and the subdivision regulations of the city of Oshkosh in surveying and mapping the same.

Dated this 24th day of January, 1977

*Steven T. Chronis*

Wisconsin Registered Land Surveyor S-913  
Steven T. Chronis

OWNERS CERTIFICATE

As owners, we hereby certify that we caused the land described on this Certified Survey Map to be surveyed, divided and mapped as represented on this Certified Survey Map.

WITNESS the hand and seal of said owners this \_\_\_\_\_ day of \_\_\_\_\_, 1977

In the presence of:

\_\_\_\_\_  
Earl A. Hoffman, owner

\_\_\_\_\_  
Jeanette E. Hoffman, owner

STATE OF WISCONSIN )  
WINNEBAGO COUNTY ) SS

Personally came before me this \_\_\_\_\_ day of \_\_\_\_\_, 1977, the above named Earl A. Hoffman and Jeanette E. Hoffman to me known to be the persons who executed the foregoing instrument and acknowledged the same.

Notary Seal \_\_\_\_\_

Notary Public, \_\_\_\_\_, Wisconsin  
My commission expires \_\_\_\_\_

CITY PLANNING COMMISSION CERTIFICATE:

This Certified Survey Map of Lot 37, except the South 100.00 feet, in Block 113 Osborn's Addition, Thirteenth (13th) Ward, City of Oshkosh, Earl A. Hoffman and Jeanette E. Hoffman, owners, is hereby approved.

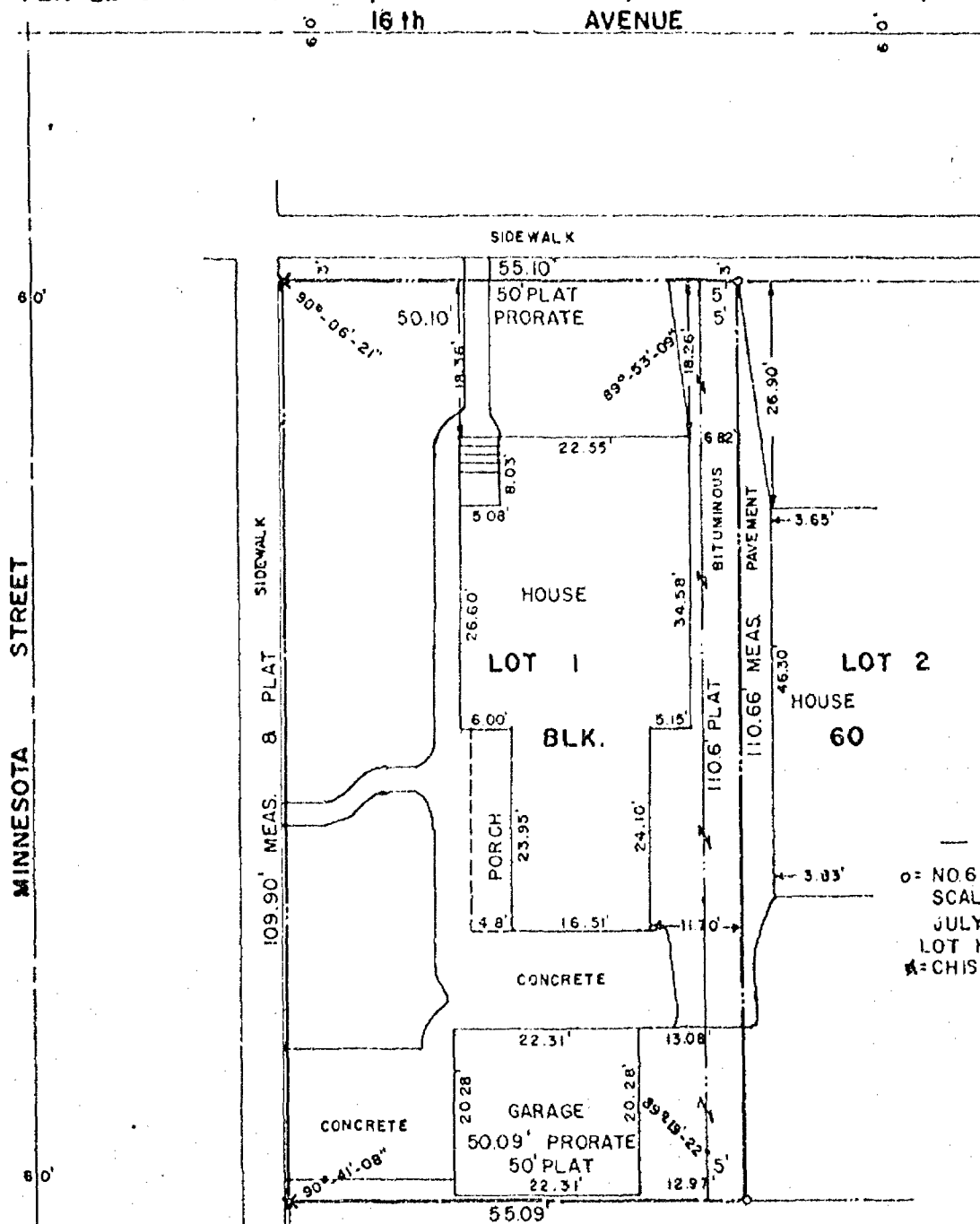
Dated this \_\_\_\_\_ day of \_\_\_\_\_, 1977

\_\_\_\_\_  
Secretary of Planning Commission  
David Wendtland

SURVEY  
FOR  
CARL GAUGER  
257 W. 16 AVENUE  
OF

JUL 25 1977

LOT 1 & WEST 5' OF LOT 2, BLOCK 60, ORIGINAL THIRD WARD, NOW NINTH WARD,  
PER LEACH'S MAP OF 1894, CITY OF OSHKOSH, WINNEBAGO COUNTY, WISCONSIN



— LEGEND —  
o = NO. 6 REROD  
SCALE: 1" = 20'  
JULY 22, 1977  
LOT HAS 6,075.48 sq. ft.  
x = CHISELLED CROSS

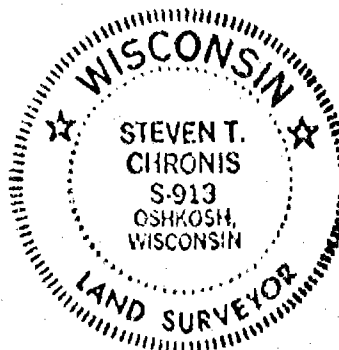
I, STEVEN T. CHRONIS, WISCONSIN REGISTERED LAND SURVEYOR OF AERO-METRIC ENGINEERING, INC., HAVE SURVEYED THE ABOVE DESCRIBED PROPERTY AND THE ABOVE MAP IS A TRUE REPRESENTATION THEREOF AND SHOWS THE SIZE AND LOCATION OF THE PROPERTY, ITS EXTERIOR BOUNDARIES, THE LOCATION AND DIMENSIONS OF ALL STRUCTURES THEREON, FENCES, APPARENT EASEMENTS AND ROADWAYS AND VISIBLE ENCROACHMENTS IF ANY.

"THIS SURVEY IS MADE FOR THE EXCLUSIVE USE OF THE PRESENT OWNERS OF THE PROPERTY, AND ALSO THOSE WHO PURCHASE, MORTGAGE OR GUARANTEE THE TITLE THERE TO WITHIN ONE (1) YEAR FROM DATE HEREOF, AND AS TO THEM I HEREBY CERTIFY THAT SAID SURVEY AND THE ABOVE MAP WERE MADE IN ACCORDANCE WITH ACCEPTABLE PROFESSIONAL STANDARDS AND THAT THE INFORMATION CONTAINED THEREON IS, TO THE BEST OF MY KNOWLEDGE, INFORMATION AND BELIEF, A TRUE AND ACCURATE REPRESENTATION THEREOF."

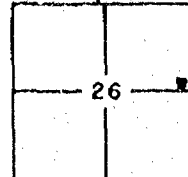
STEVEN T. CHRONIS  
WISCONSIN REGISTERED LAND SURVEYOR S-913

DATED THIS 22nd DAY OF July 1977

AERO-METRIC ENGINEERING, INC.  
PHOTOGRAMMETRIC ENGINEERS  
LAND SURVEYORS  
OSHKOSH, WISCONSIN



T. 18 N., R. 16 E.

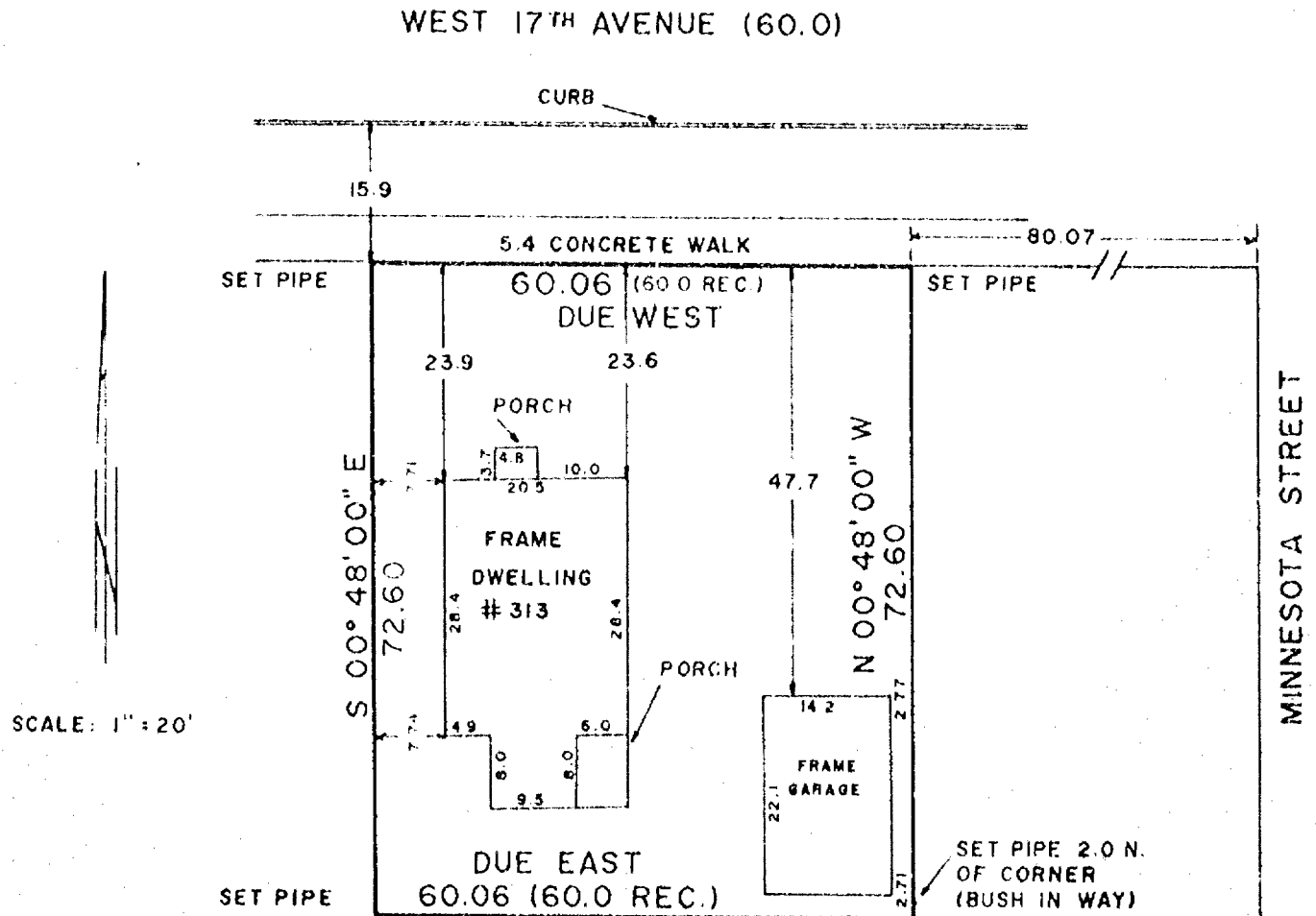


# Plat of Survey

KNOWN AS 313 WEST 17th AVENUE. THE WEST 60.0 FT. OF THE EAST  
140.0 FT. OF THE NORTH 1/2 OF LOT 24 IN JOHN SMITH'S ADDITION,  
IN THE ORIGINAL THIRD (NOW THIRTEENTH) WARD, CITY OF OSHKOSH,  
WINNEBAGO COUNTY, WISCONSIN.

AUGUST 10, 1979

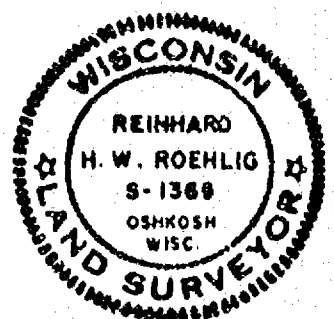
SURVEY NO. 68-S



I Certify that I have surveyed the above described property (Property), and the above map is a true representation thereof and shows the size and location of the Property, its exterior boundaries, the location and dimensions of all visible structures thereon, boundary fences, apparent easements and roadways and visible encroachments, if any.

This survey is made for the exclusive use of the present owners of the Property, and also those who purchase, mortgage, or guarantee the title thereto, within one (1) year from date hereof.

*Reinhard Roehlig*  
SURVEYOR



**national survey & engineering**

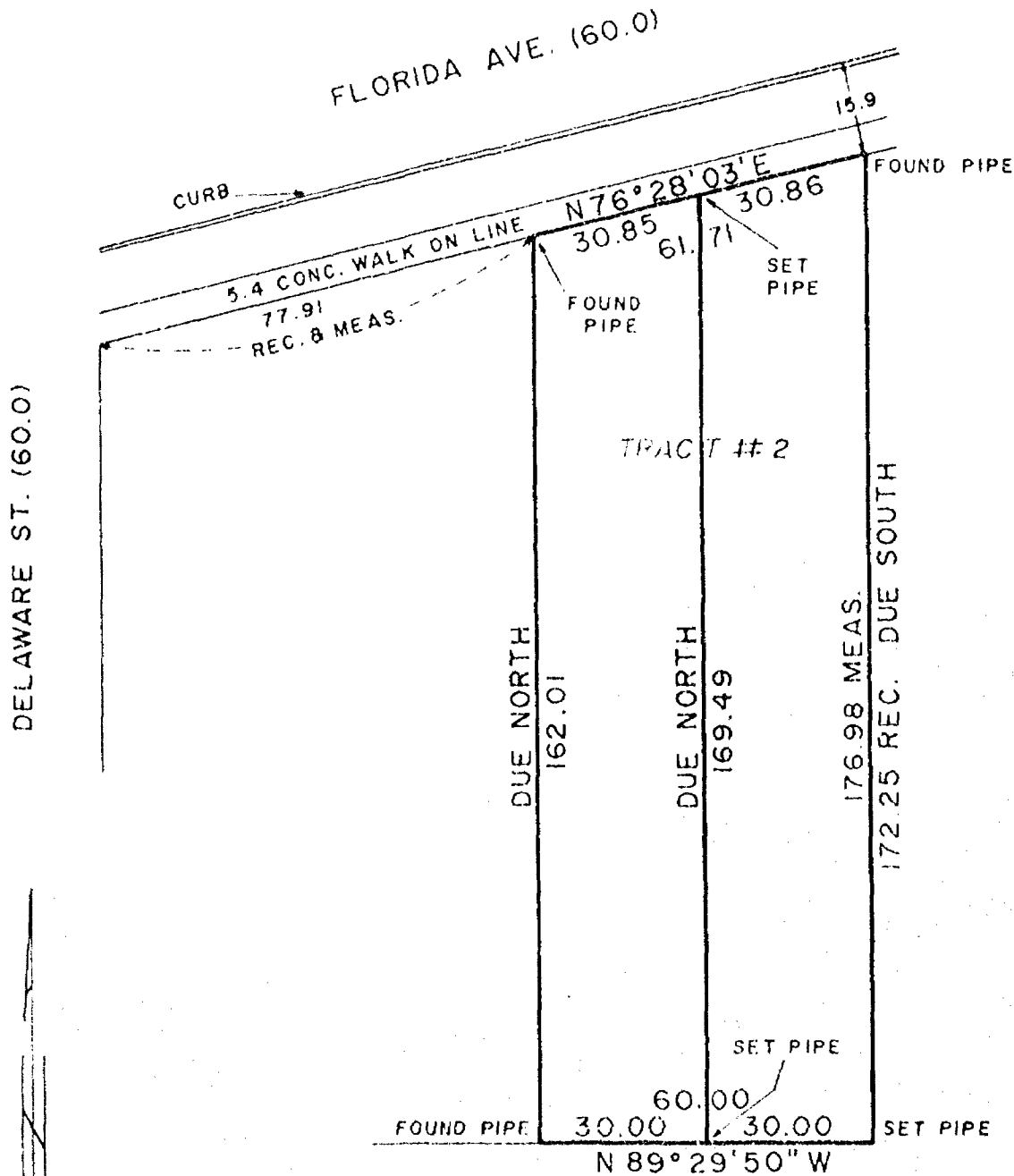
POST OFFICE BOX 2963  
OSHKOSH, WISCONSIN 54901  
426-2800

# Plat of Survey

BEING A DIVISION OF TRACT #2 OF WINNEBAGO COUNTY CERTIFIED SURVEY MAP  
RECORDED AS DOCUMENT NO. 489914; CITY OF OSHKOSH, WISCONSIN.

SEPTEMBER 26, 1979

SURVEY NO. 78-S



SCALE: 1" = 30'

I Certify that I have surveyed the above described property (Property), and the above map is a true representation thereof and shows the size and location of the Property, its exterior boundaries, the location and dimensions of all visible structures thereon, boundary fences, apparent easements and roadways and visible encroachments, if any. This survey is made for the exclusive use of the present owners of the Property, and also those who purchase, mortgage, or guarantee the title thereto, within one (1) year from date hereof.

*Reinhard Roehlig*  
SURVEYOR



**national survey & engineering**

POST OFFICE BOX 2963  
OSHKOSH, WISCONSIN 54901

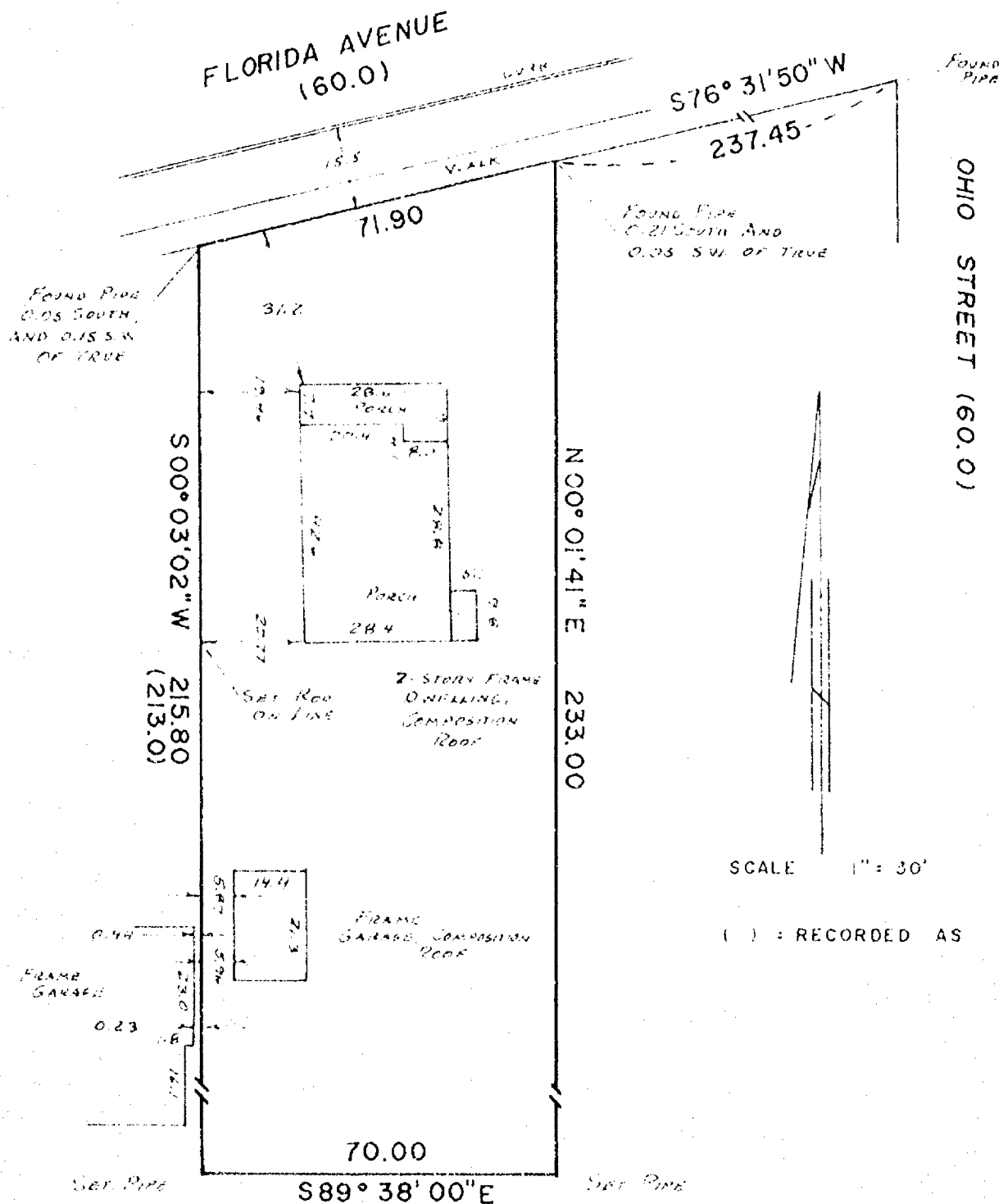
# PLAT OF SURVEY 26-18-160

KNOWN AS 627 FLORIDA AVENUE. BEING THE WEST 70.0 FT. OF LOT 29 IN BLOCK 113 OF OSBORN'S ADDITION IN THE SIXTH WARD OF THE CITY OF OSHKOSH (NOW THE 13th WARD), WINNEBAGO COUNTY, WISCONSIN, PER LEACH'S MAP OF 1894.

OCTOBER 2, 1980

(SURVEY FOR ROBERT WERTSCH)

SURVEY NO. 142-S



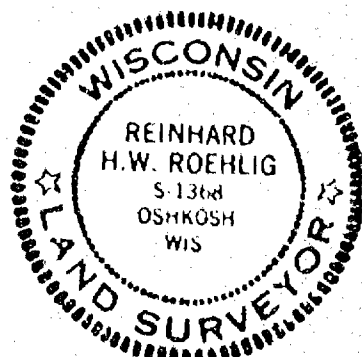
I Certify that I have surveyed the above described property (Property), and the above map is a true representation thereof and shows the size and location of the Property, its exterior boundaries, the location and dimensions of all visible structures thereon, boundary, fences, apparent easements and roadways and visible encroachments, if any. This survey is made for the exclusive use of the present owners of the Property, and also those who purchase, mortgage, or guarantee the title thereto, within one (1) year from date hereof.



**national survey & engineering**

417 NORTH SAWYER STREET / P.O. BOX 2963  
OSHKOSH, WISCONSIN 54903  
(414) 428-2800

*Reinhard Roehlig*



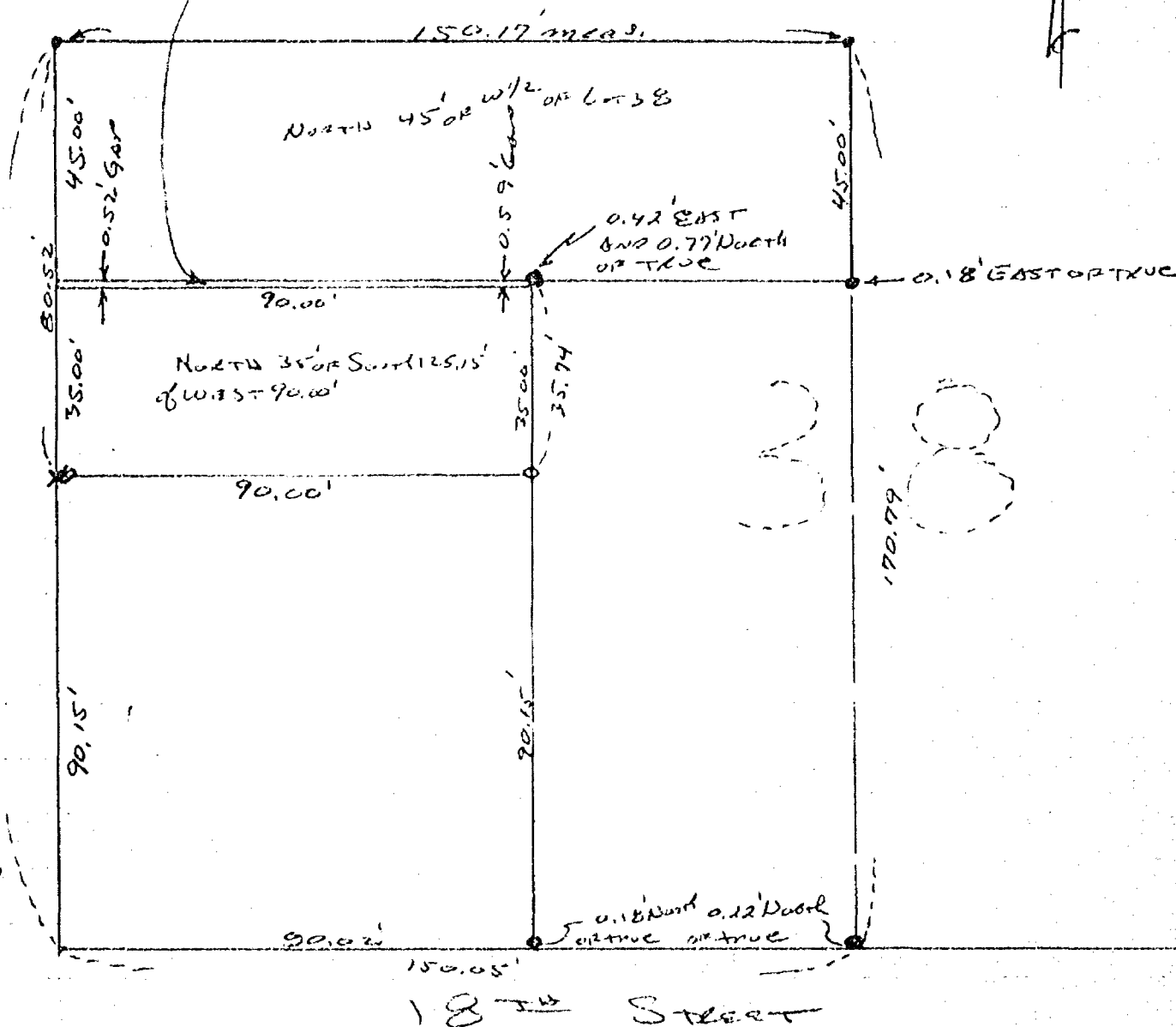


25-18-16



Area Not covered by Deed.

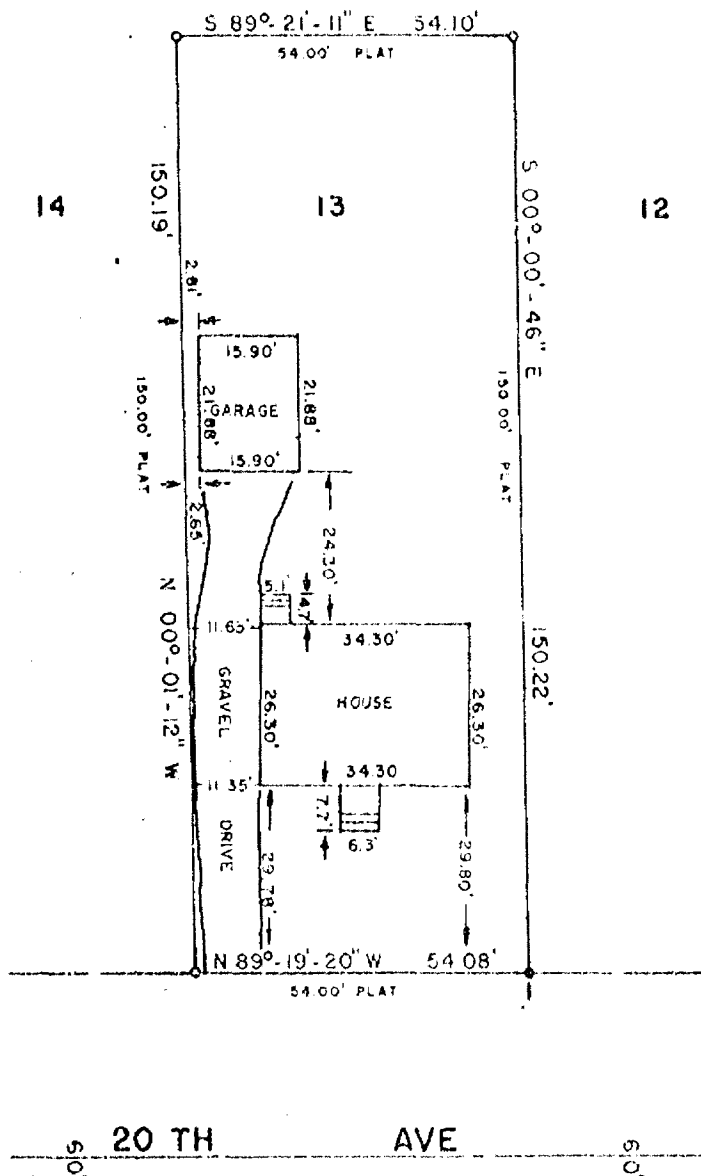
MICHIGAN STREET  
170.75' Plat  
170.67' meas.



Sketch of Survey for Bob Nelson  
of a part of Lot 38 in Town Smiths and  
Addition

SURVEY  
for  
T I E N     D O  
of

LOT 13, BLOCK 4, SMITH GROVE LAND  
COMPANY PLAT, 14th WARD, CITY OF  
OSHKOSH, WINNEBAGO COUNTY, WISCONSIN



ALL BEARINGS REFERENCED TO WEST LINE  
MONTANA STREET. ASSUMED BEARING NORTH.

- LEGEND
- = 1" 24" IRON PIPE WEIGHING 1.68 LBS./LINEAL FOOT.
  - = 1" IRON PIPE FOUND
  - = CHISELED LINE
- SCALE 1" = 30'  
DATE: SEPTEMBER 27, 1978

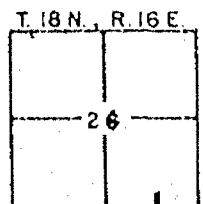
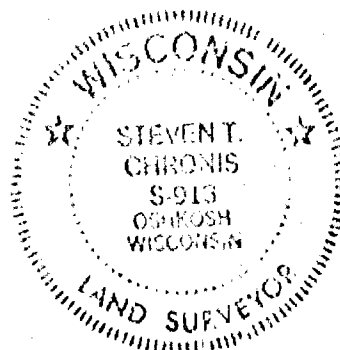
I, STEVEN T. CHRONIS, WISCONSIN REGISTERED LAND SURVEYOR OF AERO-METRIC ENGINEERING, INC., HAVE SURVEYED THE ABOVE DESCRIBED PROPERTY AND THE ABOVE MAP IS A TRUE REPRESENTATION THEREOF AND SHOWS THE SIZE AND LOCATION OF THE PROPERTY, ITS EXTERIOR BOUNDARIES, THE LOCATION AND DIMENSIONS OF ALL STRUCTURES THEREON, FENCES, APPARENT EASEMENTS AND ROADWAYS AND VISIBLE ENCROACHMENTS IF ANY.

"THIS SURVEY IS MADE FOR THE EXCLUSIVE USE OF THE PRESENT OWNERS OF THE PROPERTY, AND ALSO THOSE WHO PURCHASE, MORTGAGE OR GUARANTEED THE TITLE THERETO WITHIN ONE (1) YEAR FROM DATE HEREOF, AND AS TO THEM I HEREBY CERTIFY THAT SAID SURVEY AND THE ABOVE MAP WERE MADE IN ACCORDANCE WITH ACCEPTABLE PROFESSIONAL STANDARDS AND THAT THE INFORMATION CONTAINED THEREON IS, TO THE BEST OF MY KNOWLEDGE, INFORMATION AND BELIEF, A TRUE AND ACCURATE REPRESENTATION THEREOF."

*Steven T. Chronis*  
STEVEN T. CHRONIS  
WISCONSIN REGISTERED LAND SURVEYOR S-913

DATED THIS 28th DAY OF Sept. 19 78

AERO-METRIC ENGINEERING, INC.  
PHOTOGRAMMETRIC ENGINEERS  
LAND SURVEYORS  
OSHKOSH, WISCONSIN



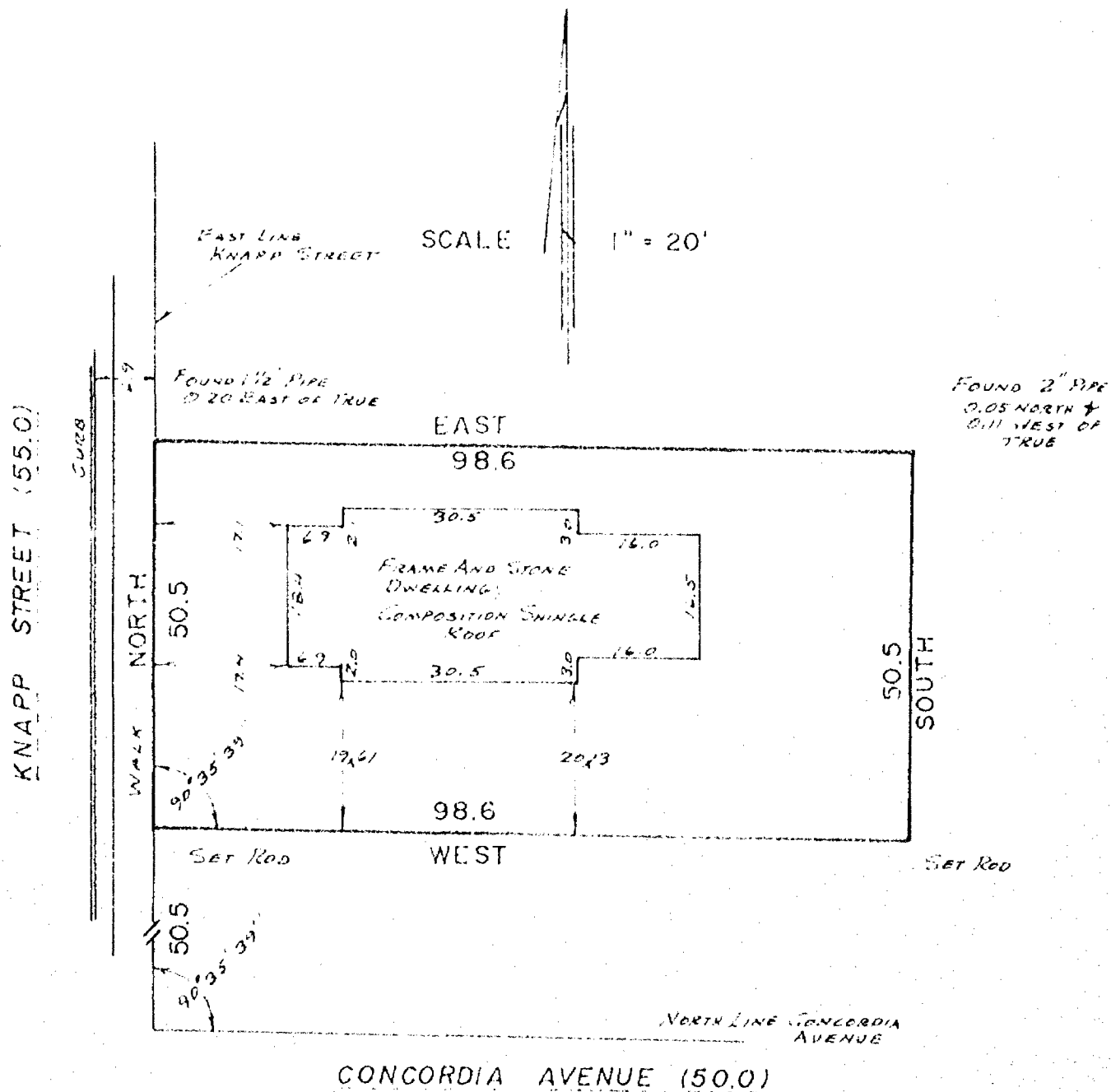
PLAT OF SURVEY 26-18-16

KNOWN AS 1314 KNAPP STREET, COMMENCING AT THE EAST LINE OF KNAPP STREET AT A POINT 50.5 FT. NORTH OF THE NORTH LINE OF CONCORDIA AVENUE, THENCE NORTH ALONG THE EAST LINE OF KNAPP STREET 50.5 FT., THENCE EAST PARALLEL TO THE NORTH LINE OF CONCORDIA AVENUE 98.6 FT., THENCE SOUTH PARALLEL TO THE EAST LINE OF KNAPP STREET 50.0 FT., THENCE WEST TO THE PLACE OF BEGINNING, BEING PART OF LOT (8) OF LOTS IN THE SUBDIVISION OF THE S.W. 1/4 OF THE N.W. 1/4 OF SECTION 26, T18N, R16E, IN THE THIRTEENTH WARD, CITY OF OGDEN, WENDEBAGO COUNTY, WISCONSIN.

JULY 27, 1981

SURVEY FOR MRS. IDA BIRCHALL

SURVEY NO. 185-S



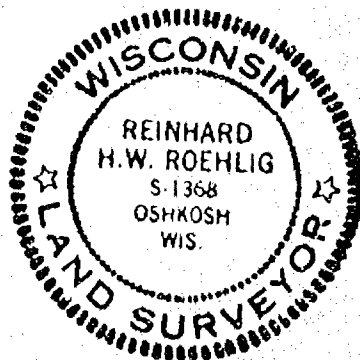
I Certify that I have surveyed the above described property (Property), and the above map is a true representation thereof and shows the size and location of the Property, its exterior boundaries, the location and dimensions of all visible structures thereon, boundary, fences, apparent easements and roadways and visible encroachments, if any. This survey is made for the exclusive use of the present owners of the Property, and also those who purchase, mortgage, or guarantee the title thereto, within one (1) year from date hereof.



 national survey & engineering

417 NORTH SAWYER STREET / P.O. BOX 2963  
OSHKOSH, WISCONSIN 54903  
(414) 426-2800

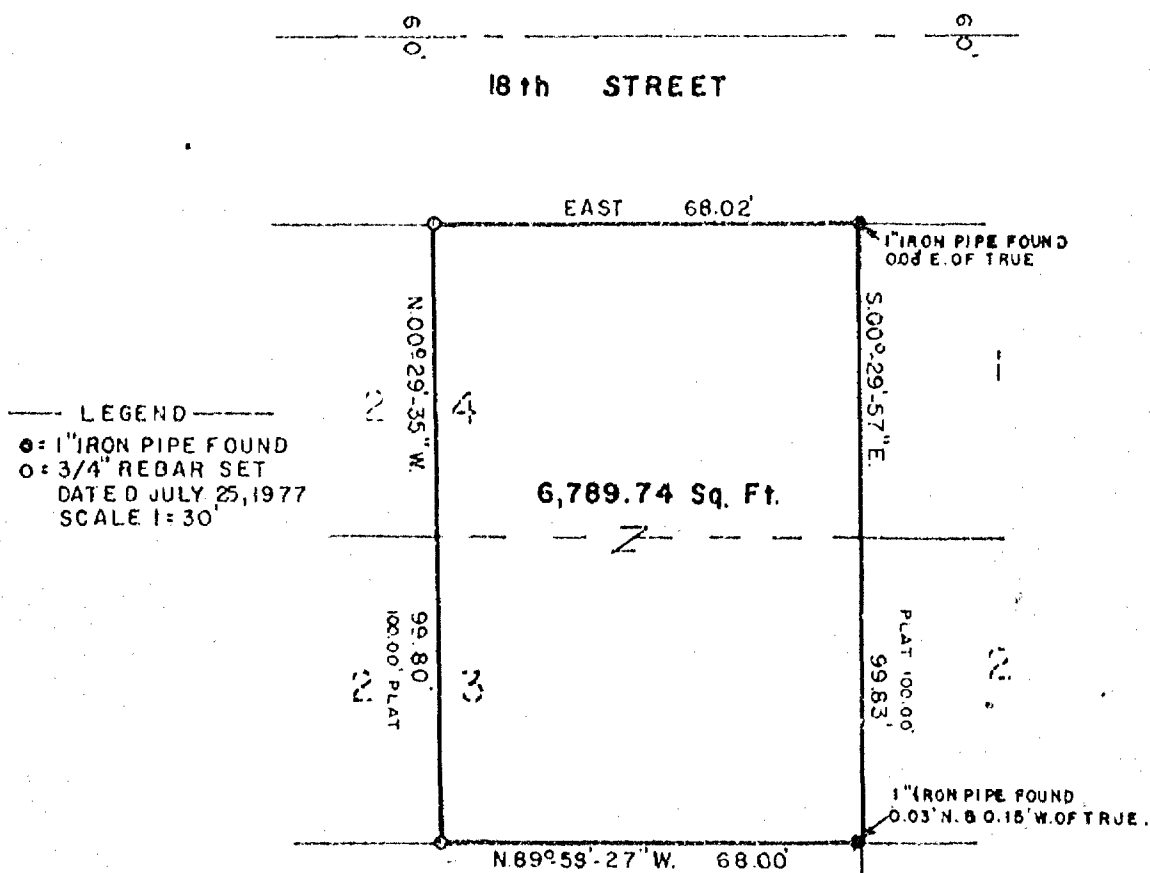
Richard Roehly



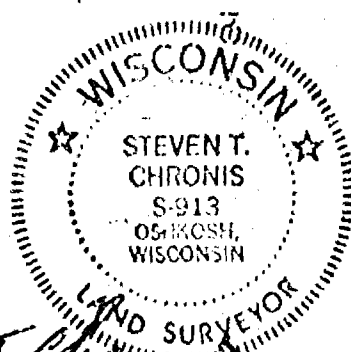
Survey for Oshkosh Builders Inc.  
of

JUL 26 1977

The East Half (E $\frac{1}{2}$ ) of Lots 23 and 24, of Block 4 Powers and Smith's Addition in the original 13th ward and now the 14th ward, City of Oshkosh, Winnebago County, Wisconsin.



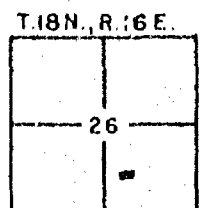
ALL BEARINGS REFERENCED TO SOUTH LINE  
OF 18th STREET ASSUMED BEARING EAST.



AERO-METRIC ENGINEERING, INC.  
PHOTOGRAMMETRIC ENGINEERS  
LAND SURVEYORS  
OSHKOSH, WISCONSIN

*Steven T. Chronis*  
WIS. REGISTERED LAND SURVEYOR S-913

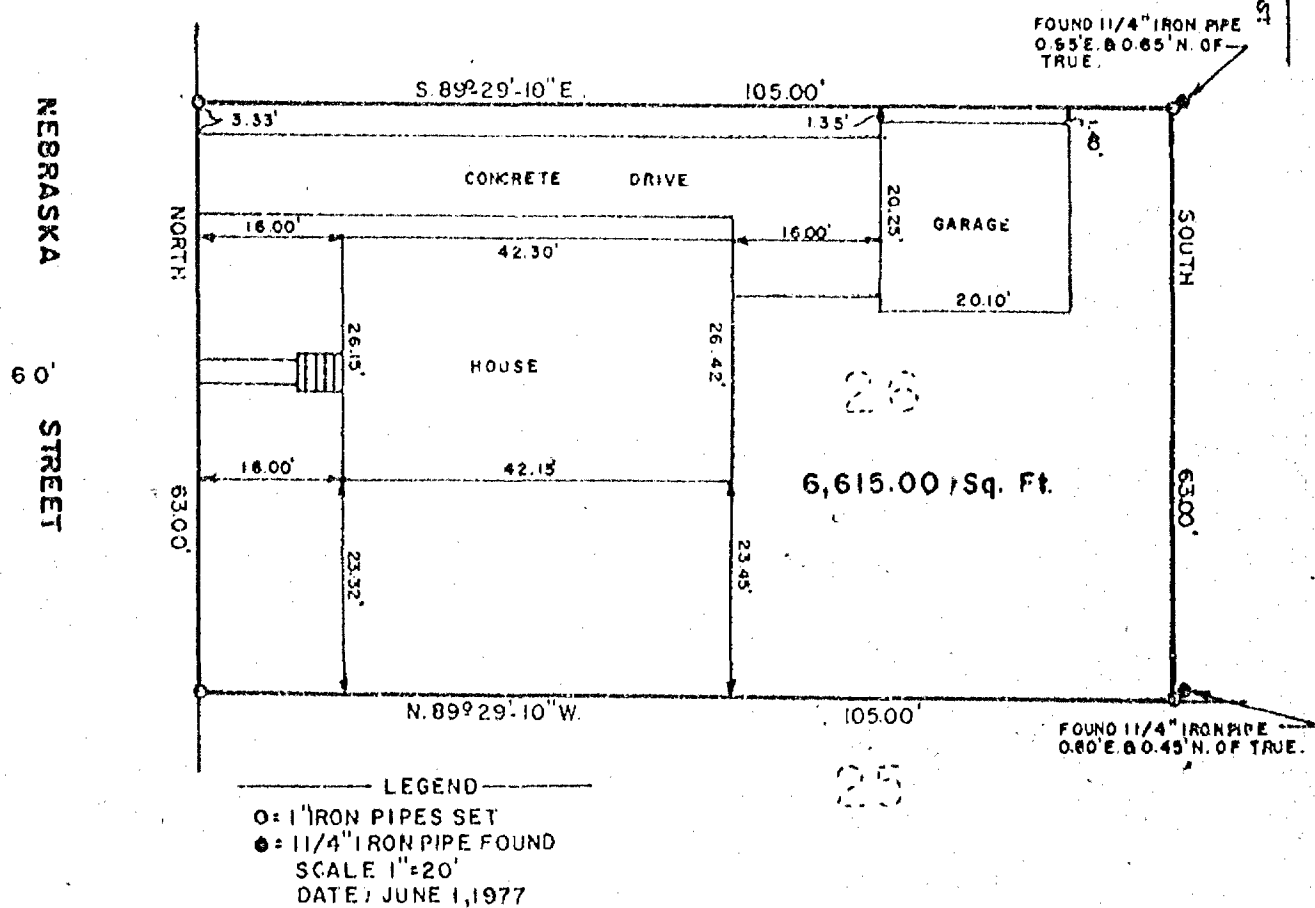
NOTEBOOK 25 PAGE 36-37



L-370

Survey  
for  
Douglas LaCroix

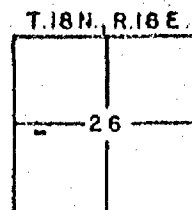
The West 105.00 feet of the South 63.00 feet of Lot 26, Clement and Doty's Subdivision, in the Third Ward, City of Oshkosh, Winnebago County, Wisconsin.



**AERO-METRIC ENGINEERING, INC.**  
PHOTOGRAMMETRIC ENGINEERS  
LAND SURVEYORS  
OSHKOSH, WISCONSIN

*Henry T. Chaswell*  
WIS. REGISTERED LAND SURVEYOR S-913

NOTEBOOK-24      PAGE 36-38



10