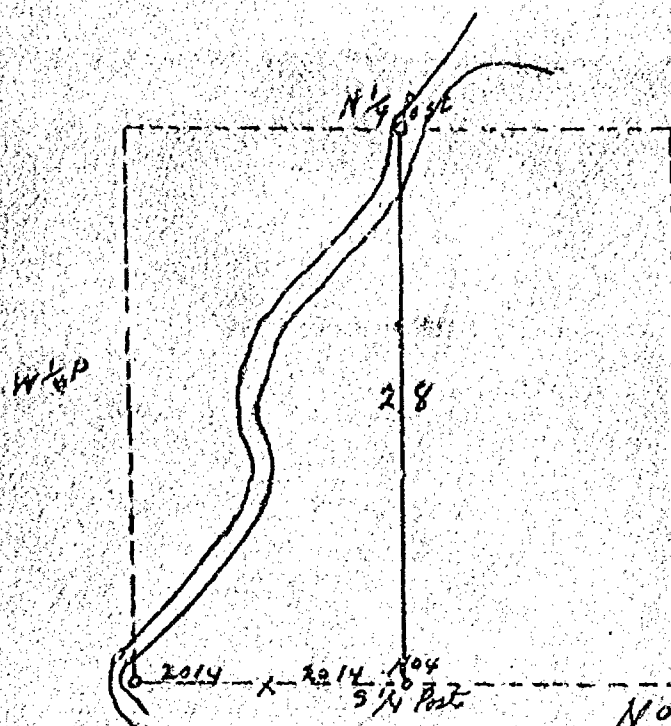


180

No. 394 Pt Sect 28-20-17 E City of Nunnah



Flg men E B Ranney,
Maxwell
Chain man E B Ranney

Found US B.E. Ash 12
S W 119 lks
Set a tall pole in slough
for N 1/4 Post ran Transm
line South to 5/4 Post

Found the decayed B.E.
Stamps for 5 1/4 Post by
US field notes &
marked new Bearing
Trees according to original stamp

No 4 Elm 9 S 89° E 2 1/2
Elm 10 S 13 1/2° E 59

Surveyed August 7th 1879.

H. W. Leach, County Surveyor

CITY OF OSHKOSH
ENGINEERING DEPARTMENT

DRAWN

SCALE