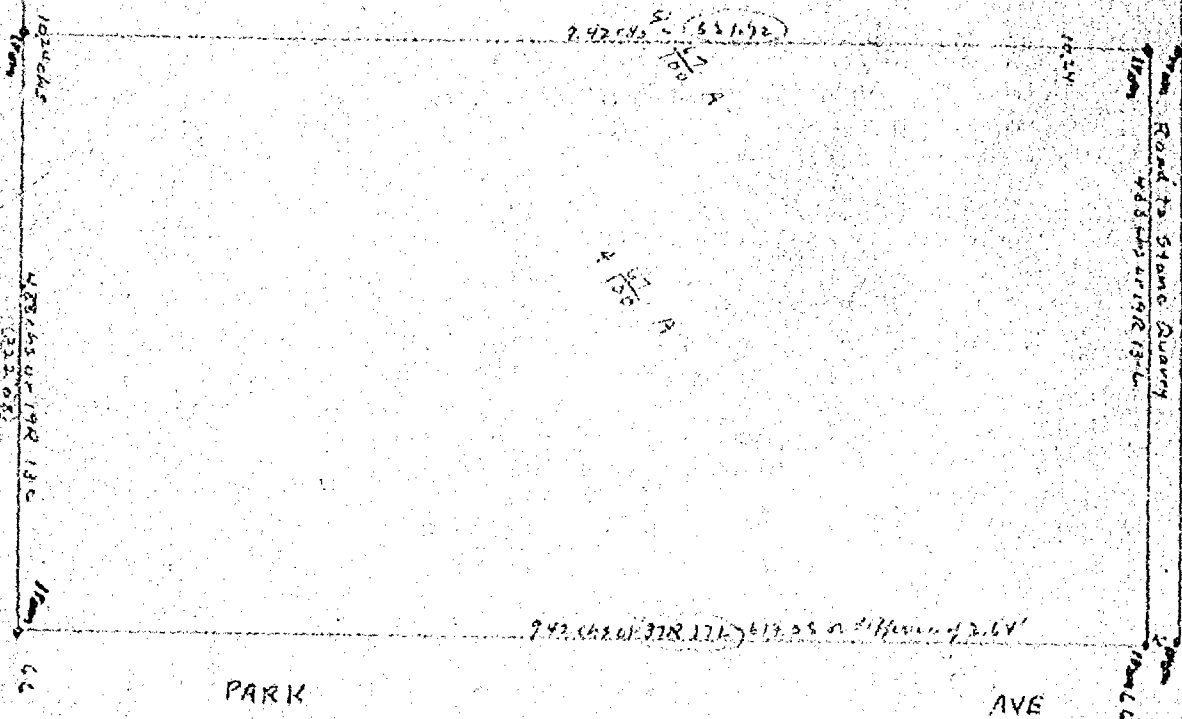


SURVEY OF CITY OF NEENAH STONE QUARRY NEENAH WISCONSIN SEC 27 T 20 R 17 E.

CITY OF NEENAH STONE QUARRY
5A



I Measured this Lot all around and found it contained only 9-67/100 acres to get the N E corner of Lot 8 I measured from three different points to establish the N E corner and as the City Deed called for just 5 acres I gave them the 5 acres and left 4-67/100 acres on the E 1/2 of lot 8 I set iron stakes as shown marked on above map in Red Ink thus(o)
Began June 11th 1912 Completed June 13th 1912,
W W Goold Co Surveyor
W W Goold Chainman
F Lightfoot

| | | |
|---|------------------|--|
| CITY OF OSHKOSH ENGINEERING DEPARTMENT | DRAWN | SURVEY OF CITY OF NEENAH STONE QUARRY NEENAH WISCONSIN SEC 27 T 20 R 17 E |
| | SCALE 1"=100' | |