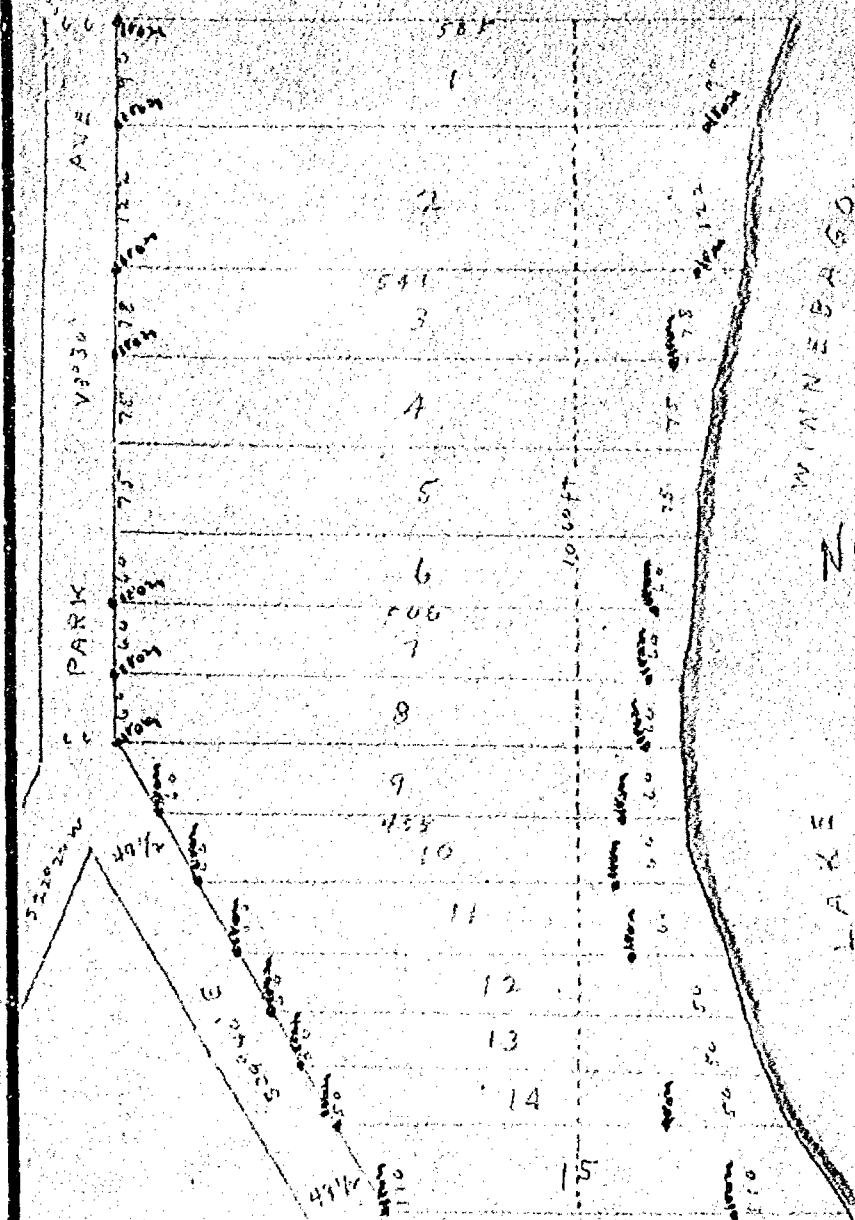


Survey of Mathison Park Addition To NEENAH WIS.

769-H



I Began at a stake set at a Lot south of a stone House on Park Avenue as instructed by Mrs Mathison from this as a starting Point I surveyed out the Lots as shown on the within map and set iron stakes as shown marked in Red Ink Began July 22d Completed July 24th 1914

W W Goold Co Surveyor

W W Goold Chainman

Earl Bronson

CITY OF OSHKOSH
ENGINEERING DEPARTMENT

DRAWN

SCALE

SURVEY OF MATHISON ADDITION TO NEENAH WIS.