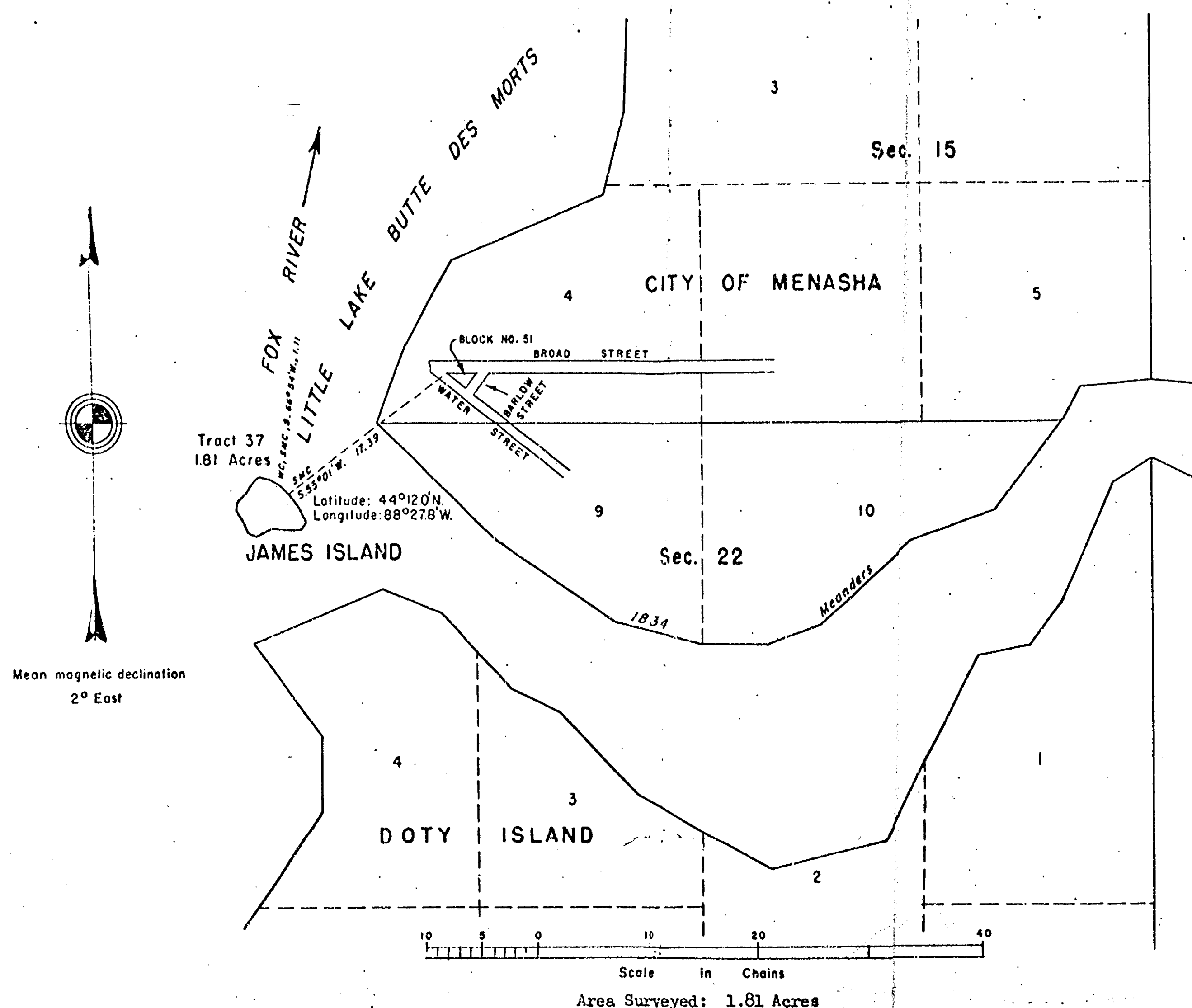


TOWNSHIP 20 NORTH, RANGE 17 EAST, OF THE FOURTH PRINCIPAL MERIDIAN, WISCONSIN

SURVEY OF TRACT 37



Field Notes of Survey

The boundaries were surveyed by Mullett and Brink, Deputy Surveyors, in 1834. A portion of the subdivision lines were surveyed by A. G. Ellis, Deputy Surveyor, in 1834, as shown upon the official plat, approved July 21, 1835. The remainder of the subdivision lines were surveyed by G. Vliet, Deputy Surveyor, in 1839, as shown on the plat approved April 20, 1839.

The survey represented hereon of James Island located in the Fox River, designated as Tract No. 37, T. 20 N., R. 17 E., includes land omitted from the original survey, and was executed in accordance with the provisions of the Manual of Surveying Instructions, 1947, and the Special Instructions dated May 13, 1968, and approved May 14, 1968, for Group No. 86, Wisconsin.

This survey was executed by Ray Harpin, Cadastral Surveyor. It was commenced on September 26, 1968, and completed on September 27, 1968, under Assignment Instructions dated September 23, 1968.

The directions of all lines of this survey were determined by direct altitude observation on the sun, for azimuth and carried forward by normal transit traverse. Distances are expressed in chains, reduced to horizontal equivalents.

Except as indicated hereon, the lotting and areas are as shown on the plat approved July 21, 1835.

The official survey of the City of Menasha, Wisconsin, in 1924 and updated in 1965, and the plats thereof, show no ties to the rectangular system of public land surveys. A number of city plats depict the rectangular system but the location on each plat varies. For this reason local control was accepted and used for this survey.

The island designated in this survey as Tract No. 37, James Island, was not included in prior surveys but was depicted on the official plat of the west portion of the township approved April 20, 1839.

The most westerly corner of Block No. 51, of the survey of the City of Menasha, Wisconsin, marked with an iron pipe, 2 ins. in diam., firmly set, with the top flush with the surface of the ground. Located at the intersection of the southern right-of-way of Broad Street and the northeastern right-of-way of Water Street. This corner point is accepted as the control for this survey.

The true point for the special meander corner, Tract No. 37, on the northeastern bank of James Island. This corner point not monumented.

From this corner point the westerly corner of Block No. 51 of the City of Menasha, Wisconsin, heretofore described, bears N. 55° 01' E., 17.39 chs. dist.

At the point for the witness cor., special meander cor. of Tract No. 37.

Set an iron post, 30 ins. long, 2½ ins. in diam., with brass cap flush with the surface of the ground, with brass cap mkd.

WC
SMC
T20N R17E
TRACT 37
1968

No suitable accessories available.

From this corner point the true point for the special meander corner of Tract No. 37, bears N. 66° 54' E., 1.11 chs. dist.

From the true point for the special meander corner of Tract No. 37,

Thence, with the meanders of island; along a well-defined bank, from 0 to 2 ft. high.

S. 38° 45' E., 1.70 chs. N. 33° 00' W., 1.20 chs.

S. 24° 45' E., 1.20 chs. N. 9° 00' E., 0.60 chs.

S. 29° 15' W., 0.60 chs. N. 44° 15' E., 0.90 chs.

S. 80° 00' W., 0.50 chs. N. 28° 00' E., 0.80 chs.

WEST, 1.00 chs. N. 43° 15' E., 1.20 chs.

N. 86° 45' W., 1.00 chs. S. 76° 00' E., 0.80 chs.

S. 63° 15' W., 1.50 chs. S. 63° 00' E., 0.80 chs.

N. 74° 30' W., 0.60 chs. S. 47° 45' E., 1.15 chs.

N. 25° 30' W., 1.10 chs.

The true point for the special meander corner of Tract No. 37, and place of beginning.

General Description

The island's formation is in all regards similar to the opposite mainland. It is of rich sandy loam formation over large boulders, or rock outcropping, with an elevation of 5 ft. above mean high-water level. Timber mostly consists of maple, ash, boxelder, cottonwood, and dogwood; undergrowth, young trees, brush, and grass.

There is no evidence of improvements, present use, or occupancy of this island.

The character of the island and timber growth thereon attest to its existence on May 29, 1848, when Wisconsin was admitted into the Union, and at all times since.

The island is over 50° upland in character within the interpretation of the Swamp Land Act of September 28, 1850.

UNITED STATES DEPARTMENT OF THE INTERIOR
BUREAU OF LAND MANAGEMENT
Washington, D. C. August 3, 1970.

This plat is strictly conformable to the above field notes of survey, which have been critically examined and found correct, and are hereby approved, and the survey, having been properly executed in accordance with the requirements of law and the regulations of this Bureau, is hereby accepted.

For the Director

Clark L. Lamm

Chief, Division of Cadastral Survey

15-20-17