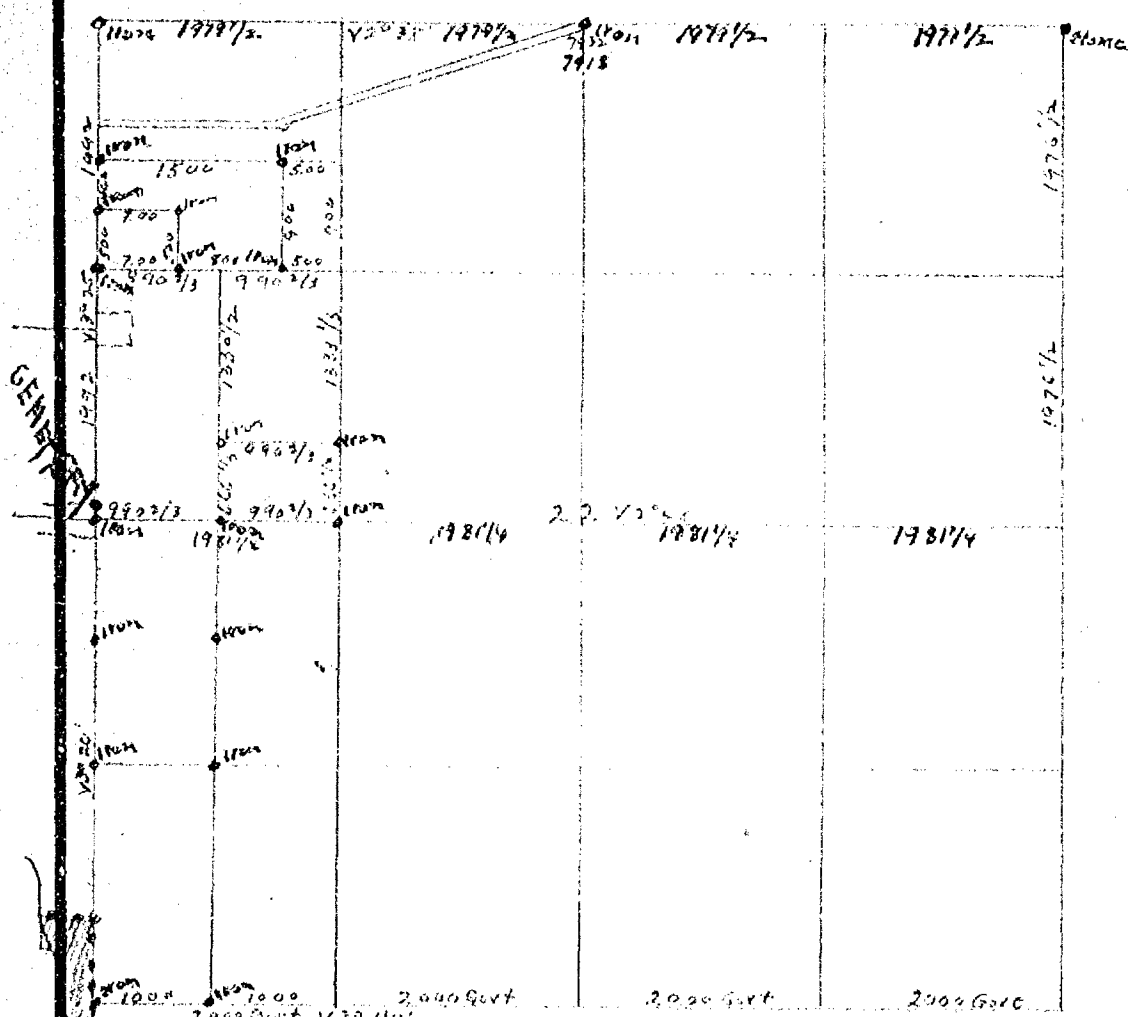


SUBDIVISION OF SEC 22. TOWNSHIP NO 19 RANGE NO 15 EAST TOWN OF WINNECONNE 178



I Began at the 1/4 S bet Sec 21 & 22 Ran east in center of Sec 22 V20° 30' at 79.25 intersect 1/4 bet Sec 22 & 23- 32 links south of stake west corrected V 20°40' at 3962 1/2 I set for 1/4 S in center of Sec 22 a 4 inch boiler flue 7 ft long Drove It in the marsh nearly the whole length and placed in center of it a 1 1/4 inch gas Pipe 10 ft long Drove It in the marsh 8 ft at 5943 3/4 I set 1/8 stake a solid steel Rod with a square flat head on top 4 1/2 ft long Drove It in the ground 3 1/2 ft at 6934 1/4 I set 1 1/4 inch gas Pipe 22 inches long Drove It in the ground nearly the whole length at 79.25 intersect 1/4 S bet Sec 21 & 22 at stake thence south on Sec line bet Sec 21&22 V 20°30' from 1/4 S stake at 4000 I intersect a corner of fence and a old wooden stake Bearings to corner was obliterated so I Established the Sec corner at this Point to conform to the Govt measurement as near as I could set for corner a 4 inch Boiler flue 7 ft long Drove It in the ground 4 1/2 ft I then set Iron stakes as shown on the within map marked in Red Ink Began March 18th Completed March 27th 1915

W W Goold Co Surveyor
Earl Bronson Chainman
Frank Droske

CITY OF OSHKOSH
ENGINEERING DEPARTMENT

DRAWN

SCALE

SUBDIVISION OF SEC 22 TOWNSHIP NO 19
RANGE NO 15 EAST TOWN OF WINNECONNE
WINNEBAGO CO. WIS.

Copied Dec. 14, 1943 G.S.O.

