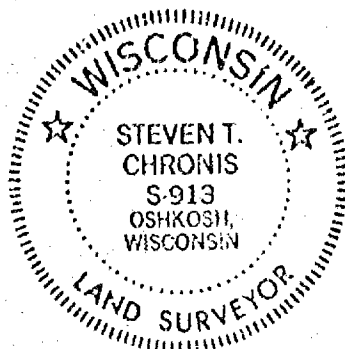
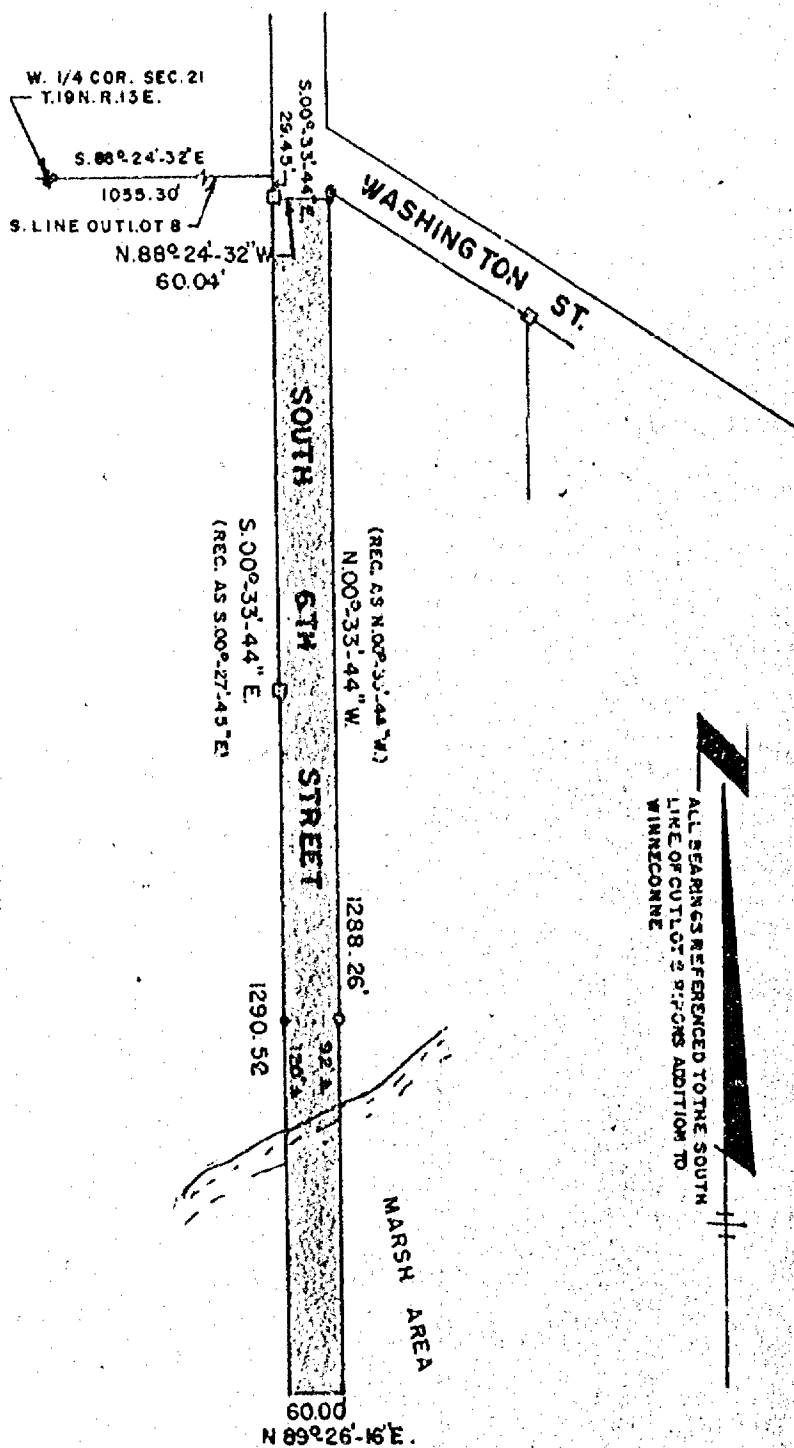


Description for Vacation
of
South 6th Street
South of Washington Street

Commencing at the West Quarter (W $\frac{1}{4}$) corner of Section Twenty-One (21) Township Nineteen (19) North, Range Fifteen (15) East in the Village of Winneconne, Winnebago County, Wisconsin, thence S.88°-24'-32"E. 1055.30 feet along the South line of Outlot 8 in Ripon's Addition to Winneconne to its intersection with the West line of South 6th Street, thence S.00°-33'-44"E. 29.45 feet along the West line of South 6th Street, previously recorded as S.00°-27'-45"E., to the true point of beginning, thence continue S.00°-33'-44"E. 1290.52 feet, previously recorded as S.00°-27'-45"E., along the West line of South 6th Street, thence N.89°-26'-16"E. 60.00 feet, previously recorded as N.89°-32'-15"E., thence N.00°-33'-44"W. 1288.26 feet, previously recorded as N.00°-27'-45"W., along the East line of South 6th Street, thence N.88°-24'-32"W. 60.04 feet to the true point of beginning.



LEGEND

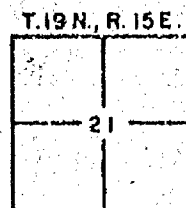
- ▲ = HARRISON MONUMENT
- = 1/2" ROD IN CONC. FOUND
- = 3/4" ROD FOUND
- = 1" IRON PIPE SET

SCALE 1"=200'
DATE NOV.13, 1978

AERO-METRIC ENGINEERING, INC.
PHOTOGRAMMETRIC ENGINEERS
LAND SURVEYORS
OSHKOSH, WISCONSIN

Steven T. Chronis
WIS. REGISTERED LAND SURVEYOR S-913

NOTEBOOK 38 PAGE 17-18



L-587